

## SECTION 7 - RUNNING GEAR

DESCRIPTION	ASSEMBLY NUMBER
Axle Assembly, Front	83650A
Axle Assembly, Front	A83640C
Axle Box Mounting Assembly	A84162A
Axle Box with Bolt Pads	A84207A
Box - Axle, Mounting Assembly	A84162A
Box - Axle, with Bolt Pads	A84207A
Cap Assembly, Hub (Standard)	69184M
Front Axle Assembly	83650A
Front Axle Assembly	A83640C
Front Suspension Assembly	A83800H
Front Wheel Assembly	82559E
Hub Cap Assembly (Standard)	69184M
Mechanical Steering Assembly	A83700A
Rear Suspension Assembly	A83801F
Rim Assembly	80113M
Steering Assembly, Mechanical	A83700A
Suspension Assembly, Front	A83800H
Suspension Assembly, Rear	A83801F
Wheel Assembly, Front	82559E
Wheelmotor Assembly	82225
Wheelmotor Assembly	A83829M

(3)

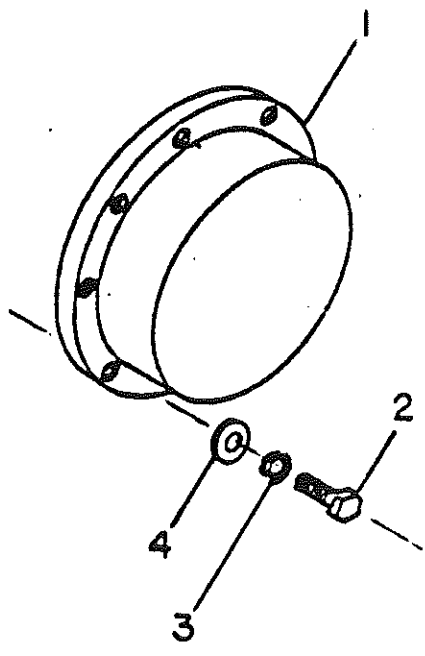
(3)

(3)

NO. 69184M

ITM	QTY PER ASSY	COMPONENT	DESCRIPTION
001	1	62742S	CAP, HUB-FRONT (STD)
002	8	10002	CAPSCR, HX, 1/4-20NC X 1 GR 5
003	8	10178	WASH, LK, HELI, 1/4
004	8	10162	WASHER-FLAT 1/4

THIS DOCUMENT CONTAINS INFORMATION PROPRIETARY TO UNIT RIG, INC. IT SHALL NOT BE REPRODUCED, USED, OR DISCLOSED TO ANYONE WITHOUT THE PRIOR WRITTEN PERMISSION OF UNIT RIG, INC.



DR. MASSIE  
 ENG. APP. *Fujan*  
 REL. CK. *Moads*

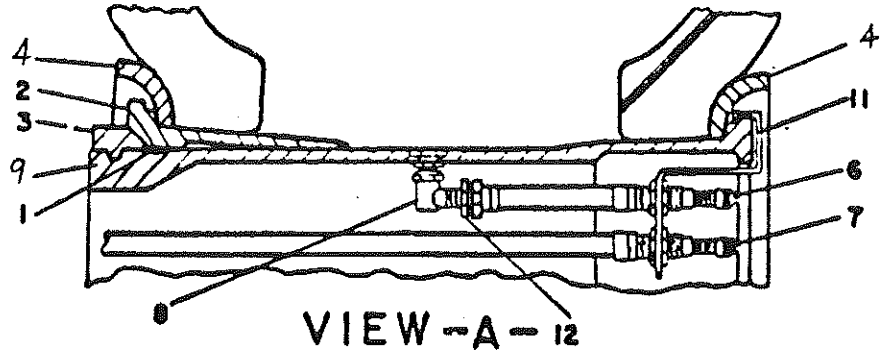
2242  
 E.N. NO.



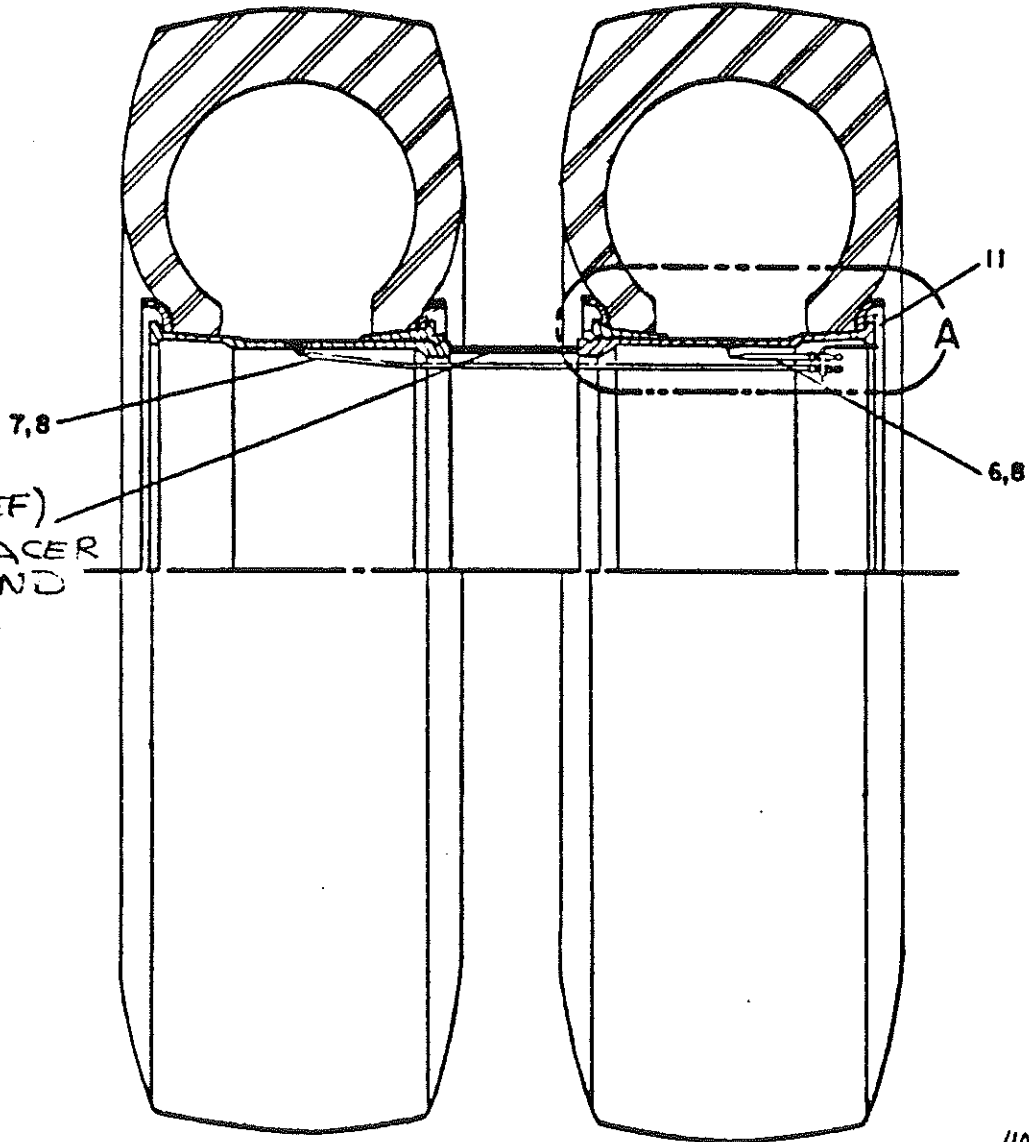
HUB CAP ASSY (STD)

SHEET / OF /  
 ASSY.  
 NO. 69184M

NO. 80113M



APERTURE CARD MADE  
 THIS DRAWING CONTAINS INFORMATION PROPRIETARY TO UNIT RIG &  
 EQUIPMENT CO. IT SHALL NOT BE REPRODUCED, USED, OR DISCLOSED TO ANY  
 ONE WITHOUT THE PRIOR WRITTEN PERMISSION OF UNIT RIG & EQUIPMENT CO.



(REF)  
 SPACER  
 BAND

ONE SIDE SHOWN ONLY

40 x 57

DR. *OXJ*  
 ENG. APP *NIELSEN*  
 REL. CK. *ELLIS*

89418  
 85858  
 84170  
 84749

E.N. NO. WT.  
 14310 LB.



RIM ASSEMBLY  
 SHEET 1 OF 3  
 NUMBER 80113M

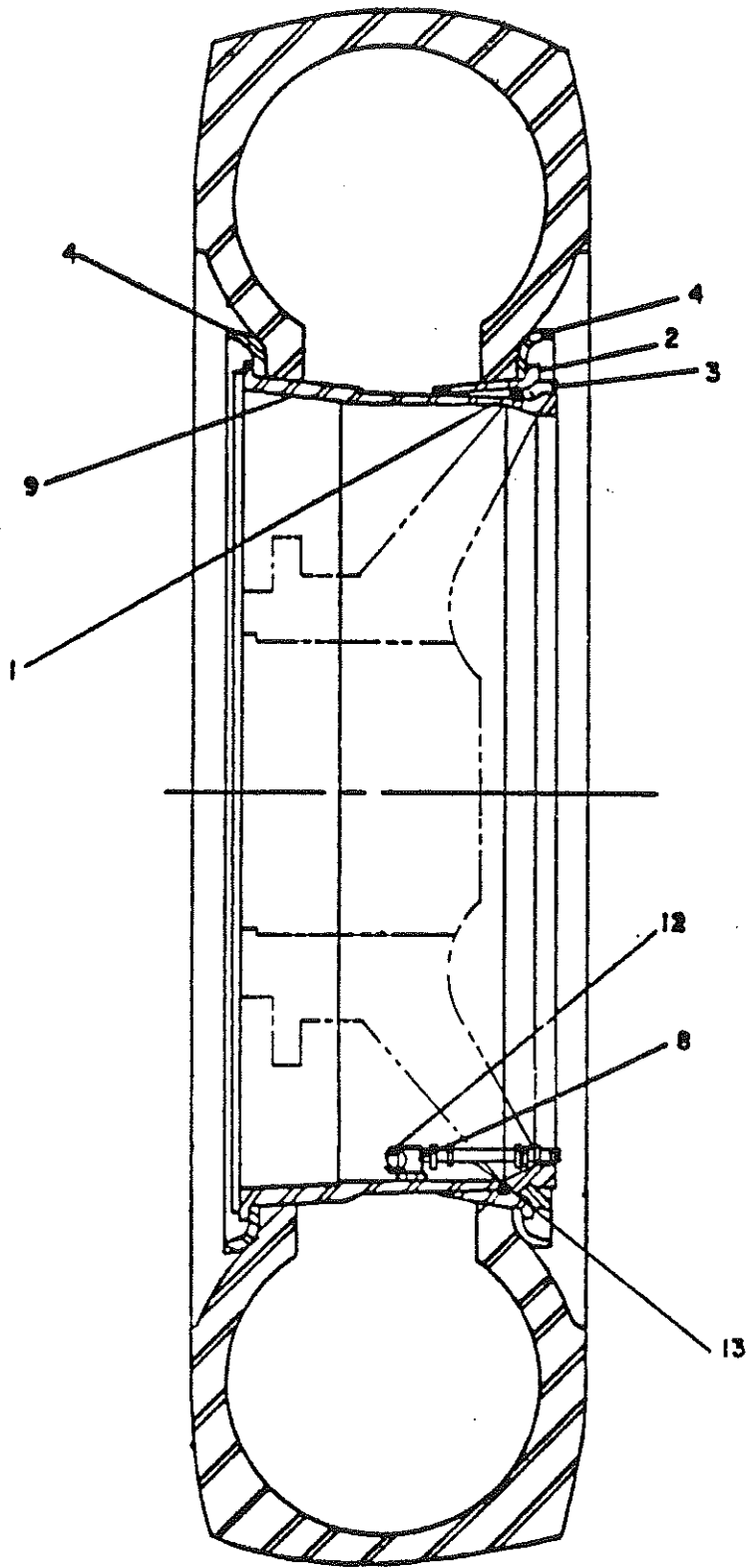
MR. 80113M

APERTURE CARD MADE.  
THIS DOCUMENT CONTAINS INFORMATION PROPRIETARY TO UNIT RIG &  
EQUIPMENT CO. IT SHALL NOT BE REPRODUCED, USED, OR DISCLOSED TO ANY  
ONE WITHOUT THE PRIOR WRITTEN PERMISSION OF UNIT RIG & EQUIPMENT CO.

R. DXS  
ING. APP  
REL. CK.

89418  
85858  
84770  
84749

S. NO. WT.



RIM ASSEMBLY  
SHEET 2 OF 3  
NUMBER 80113M

80113M

THIS DOCUMENT CONTAINS INFORMATION PROPRIETARY TO UNIT RIG, A DIVISION OF TEREX CORPORATION. IT SHALL NOT BE REPRODUCED, USED OR DISCLOSED TO ANYONE WITHOUT PRIOR WRITTEN PERMISSION OF UNIT RIG.

Copyright date 27 MAR 94

ITM	QTY PER ASSY	COMPONENT	DESCRIPTION
001	6	22775	SEAL-RIM 57"
002	6	55093	BEAD SEAT BAND
003	6	55094	LOCK RING
004	12	55095	FLANGE
006	2	53644	STEM, VALVE LENGTH = 19-3/4"
007	2	52971	STEM-VALVE
008	6	25187	SPUD-ANGLE
009	6	55092	RIM BASE, 29X57 MFS
011	2	66130E	VALVE STEM SUPPORT FOR RIMEX 2957MES/HDT
012	6	902990	LOCKNUT-HEX
013	2	25179	STEM VALVE

RIMEX 29X57 RIMS.

DR. **BAM**

ENG. APP. **TLD**

REL. CK. **Ellis**

8418

8585B

84770

84749

E.N. NO.



RIM ASSEMBLY

SHEET 3 OF 3

ASSY.  
NO. 80113M

**\* 82225M \***  
WHEEL MOTOR  
787FS11

\* SEE SERVICE PARTS



UNIT RIG

WHEEL MOTOR  
787FS11

**82225M**

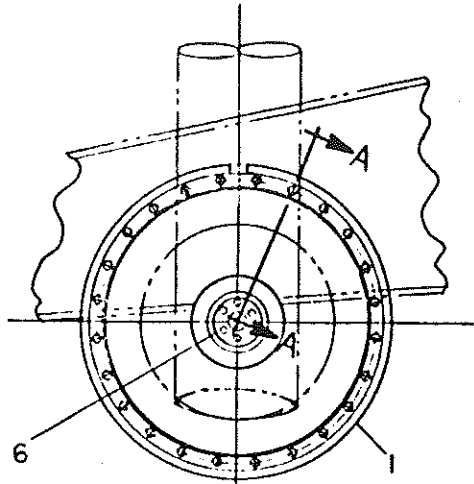
E.N. 89004

SHEET 1 OF 1

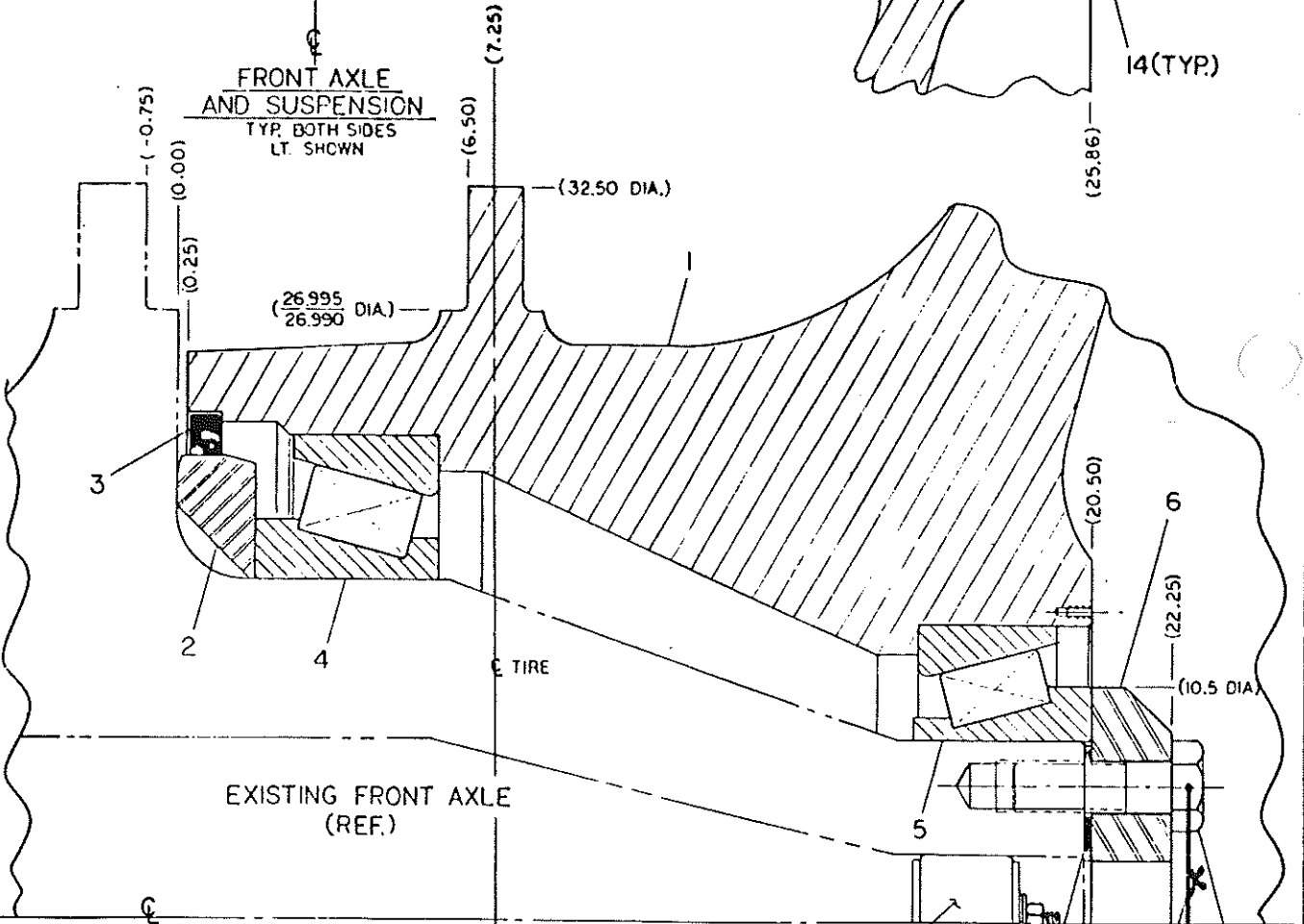
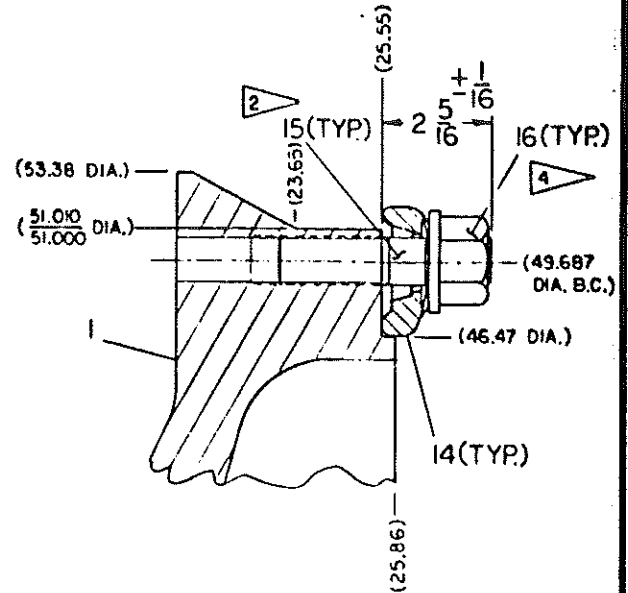
82559 E

THIS DOCUMENT CONTAINS INFORMATION PROPRIETARY TO UNIT RIG & EQUIPMENT CO., IT SHALL NOT BE REPRODUCED, USED, OR DISCLOSED TO ANYONE WITHOUT PRIOR WRITTEN PERMISSION OF UNIT RIG & EQUIPMENT CO. © COPYRIGHT DATE

DR. M. CHILDERS  
 ENG. APP  
 GREENS  
 REL. CK.  
 J. ELLIS

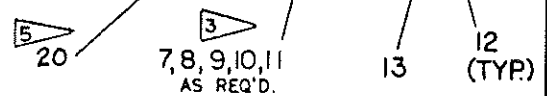


FRONT AXLE AND SUSPENSION  
 TYP. BOTH SIDES  
 LT. SHOWN



SECTION A-A

- 1 DIMENSIONS SHOWN ( ) ARE "REF. ONLY"
- 2 APPLY LOCTITE 242 TO LONG THREADED END OF STUD AND INSERT TOWARDS WHEEL AS SHOWN.
- 3 SEE T5031 BEARING ADJUSTMENT PROCEDURE
- 4 TORQUE PER O2-475
- 5 INSTALL EXPANSION PLUG WITH CLEARANCE FROM END OF STUD TO END OF SPINDLE.



89484  
 88288  
 87363  
 E.N. NO.



FRONT WHEEL ASS'Y.  
 (40:00 X 57 TIRE)

SHEET 1 OF 2

82559 -E

82559 E

THIS DOCUMENT CONTAINS INFORMATION PROPRIETARY TO UNIT RIG, A DIVISION OF TEREX CORPORATION. IT SHALL NOT BE REPRODUCED, USED OR DISCLOSED TO ANYONE WITHOUT PRIOR WRITTEN PERMISSION OF UNIT RIG.

Copyright date

ITM	* QTY PER ASSY *	E	COMPONENT	DESCRIPTION
001	1		82819A	WHEEL, FRONT
002	1		79003C	SPACER-WHEEL BEARING
003	1		52951	SEAL, WHEEL (FRONT)
004	1		52924	BEARING, TAPER ROLLER
005	1		52956	BEARING, TAPER ROLLER
				*****
				BORE DIA. = 8.125
				OUTER DIA. = 13.250
				WIDTH = 3.875
				*****
				ALTERNATE:
				TORRINGTON P/N
				81TSH9426B01254 (CONE)
				ETS942A (CUP)
				*****
				NOTE: BEARING CAN BE
				SUBSTITUTED AS UNIT
				ONLY. DO NOT MIX CUPS
				OR CONES!!
				*****
006	1		61796F	RETAINER, BEARING
007	3		82513G	SHIM (.062")
008	1		82513H	SHIM (.031")
009	1		82513J	SHIM (.015")
010	2		82513K	SHIM (.005")
011	2		82513M	SHIM (.002")
012	6		20065	CAPSCR, HXDRL, 1-1/8-NC
				X 3-1/2 GR 5
013	2	FT	22324	WIRE, SAFETY (.041 DIA)
014	24		16780	CLAMP-ROUND NOSE
015	24		947898	BOLT, STUD, 1-14UNS X
				4-1/2 LG
016	24		24565	NUT, HVYHX FLG, 1-14UNS
020	1		55942	PLUG, 3" EXPANSION
				NATURAL RUBBER

ASSY 'E' HAS RETAINER PLATE W/O CTR HOLE.

DR.  
M.I.C.  
ENG. APP.  
**GOG**  
REL. CK.  
**ELLIS**

89484  
88288  
87363  
E.N. NO.



FRONT WHEEL ASSEMBLY

SHEET 2 OF 2

ASSY. NO. 82559 -E



E.N. NO.

88102

89119

983

90216

SP-241

REL. CK.

ENG. APP.

T. GRAHAM

DR.

THIS DOCUMENT CONTAINS INFORMATION PROPRIETARY TO UNIT RIG, A DIVISION OF TEREX CORPORATION. IT SHALL NOT BE REPRODUCED, USED OR DISCLOSED TO ANYONE WITHOUT PRIOR WRITTEN PERMISSION OF UNIT RIG.

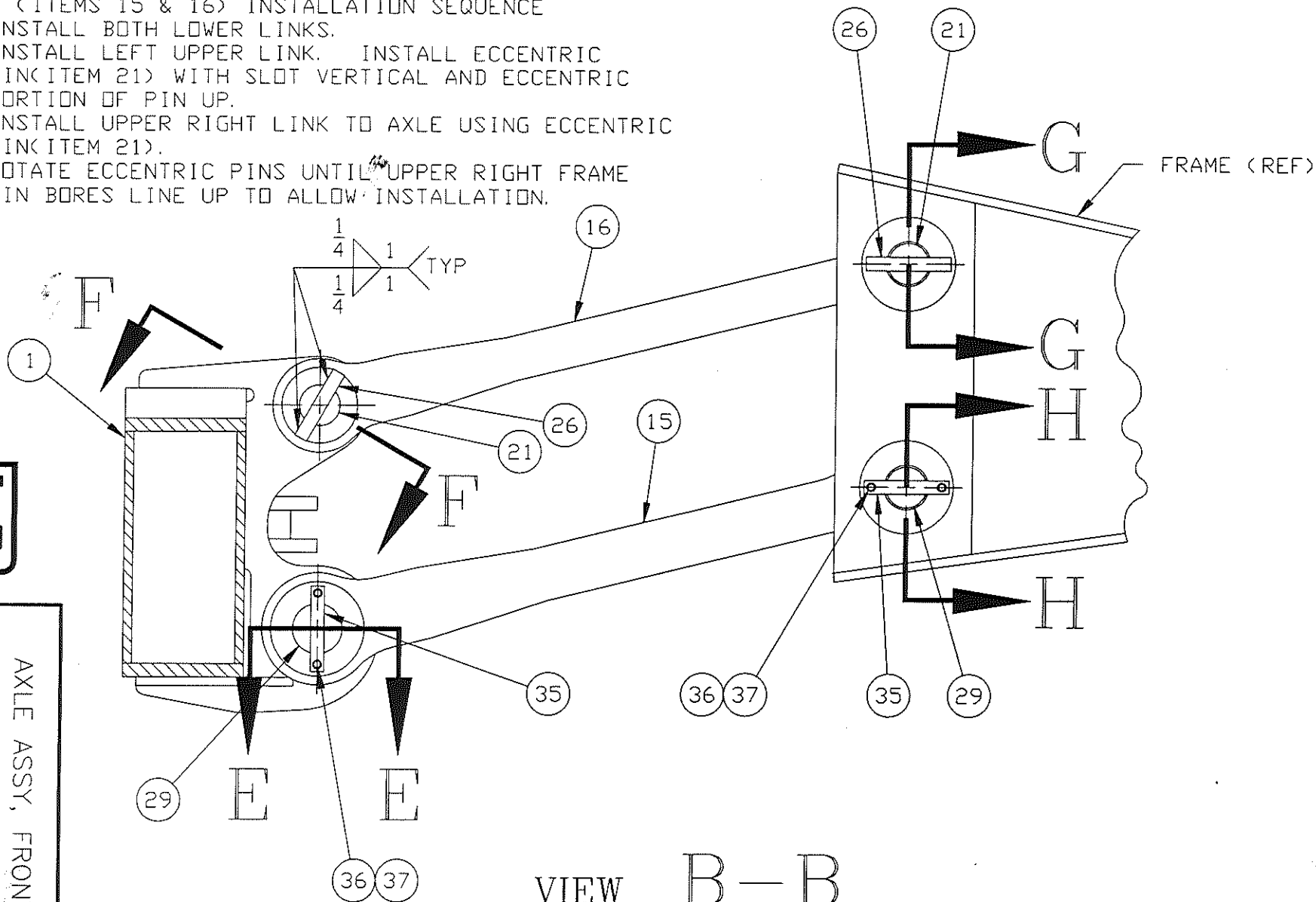
© COPYRIGHT DATE 5-3-94

AIVERT

A83640

LINK (ITEMS 15 & 16) INSTALLATION SEQUENCE

1. INSTALL BOTH LOWER LINKS.
2. INSTALL LEFT UPPER LINK. INSTALL ECCENTRIC PIN (ITEM 21) WITH SLOT VERTICAL AND ECCENTRIC PORTION OF PIN UP.
3. INSTALL UPPER RIGHT LINK TO AXLE USING ECCENTRIC PIN (ITEM 21).
4. ROTATE ECCENTRIC PINS UNTIL UPPER RIGHT FRAME PIN BORES LINE UP TO ALLOW INSTALLATION.



VIEW B-B

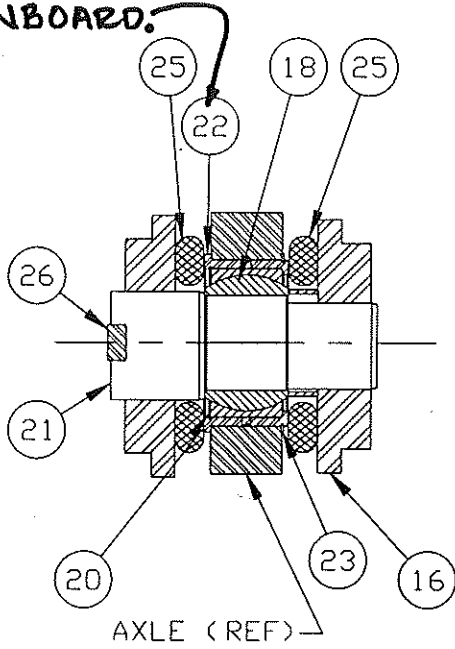


AXLE ASSY, FRONT

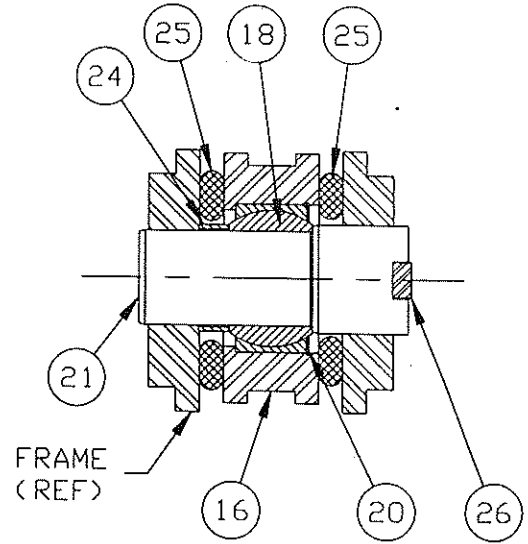
SHEET 2 OF 4  
A83640

A83640

ORIENT UPPER TRAILING LINK SLEEVE (ITEM 22) SO THAT SHOULDER IS INBOARD.

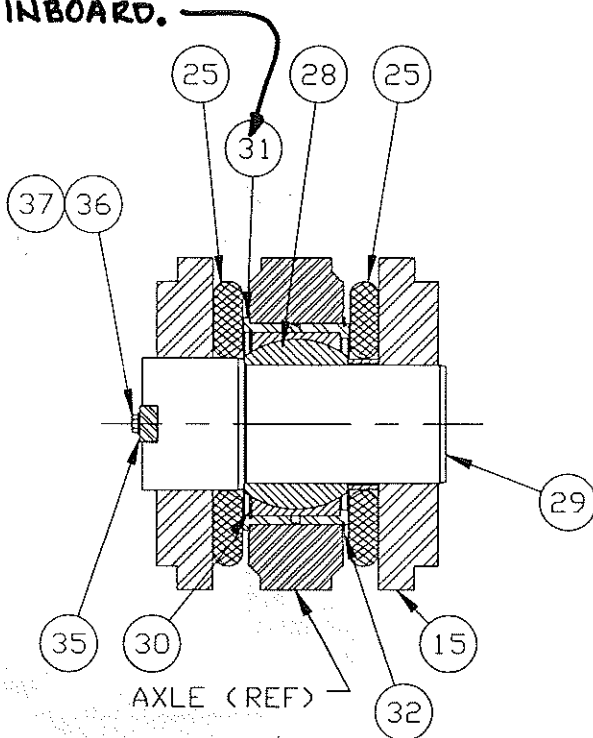


SEC F-F  
(TYP 2 PLACES)

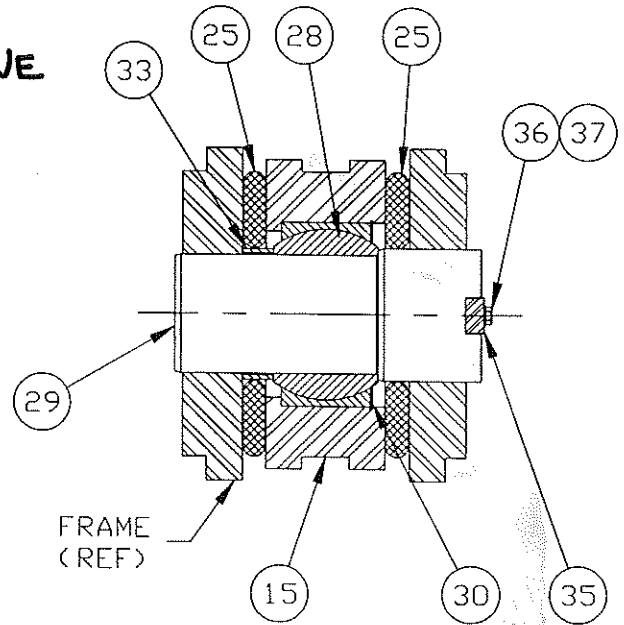


SEC G-G  
(TYP 2 PLACES)

ORIENT LOWER TRAILING LINK SLEEVE (ITEM 31) SO THAT SHOULDER IS INBOARD.



SEC E-E  
(TYP 2 PLACES)



SEC H-H  
(TYP 2 PLACES)

THIS DOCUMENT CONTAINS INFORMATION PROPRIETARY TO UNIT RIG, A DIVISION OF TEREX CORPORATION. IT SHALL NOT BE REPRODUCED, USED OR DISCLOSED TO ANYONE WITHOUT PRIOR WRITTEN PERMISSION OF UNIT RIG.

© COPYRIGHT DATE 5-3-94

DR.  
T. GRAHAM  
ENG. APP.  
REL. CK.

SP-241

90216

89983

89119

88102

E.N. NO.



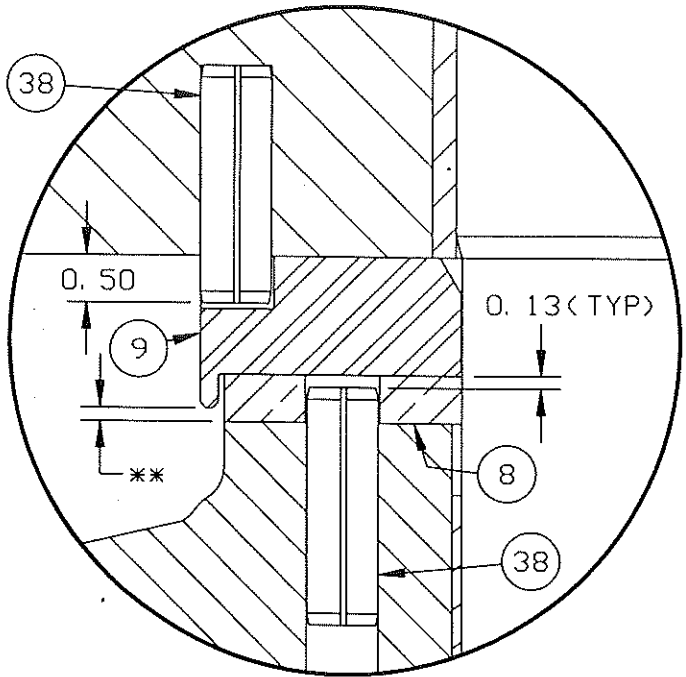
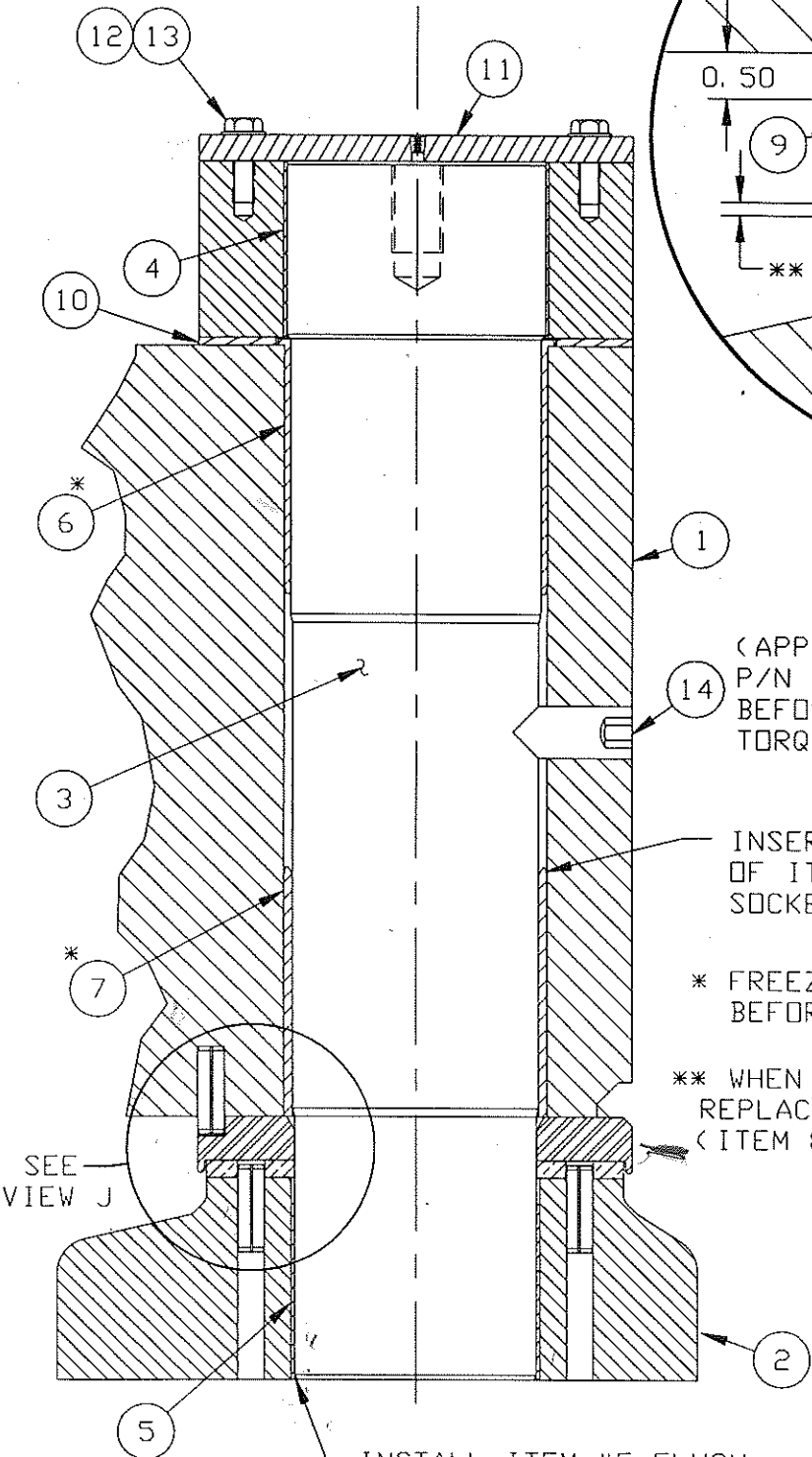
AXLE ASSY, FRONT

SHEET 3 OF 4

A83640

THIS DOCUMENT CONTAINS INFORMATION PROPRIETARY TO  
 UNIT RIG, A DIVISION OF TEREX CORPORATION. IT SHALL NOT BE  
 REPRODUCED, USED OR DISCLOSED TO ANYONE WITHOUT PRIOR  
 WRITTEN PERMISSION OF UNIT RIG.  
 © COPYRIGHT DATE 5-3-94

A83640



VIEW J

(APPLY LOCTITE 242,  
 P/N 25764, TO ITEM 14  
 BEFORE INSTALLING)  
 TORQUE TO 500 FT-LBS

INSERT CHAMFERED END  
 OF ITEM 7 INTO  
 SOCKET FROM BOTTOM

\* FREEZE ITEMS 6 & 7  
 BEFORE INSTALLING

\*\* WHEN THIS DIM. IS 0.030  
 REPLACE THRUST WASHER  
 (ITEM 8)

INSTALL ITEM #5 FLUSH  
 WITH BOTTOM OF ITEM #2.

SEC C—C

FROM SHT 1



AXLE ASSY, FRONT

SHEET 4 OF 4  
 A83640

DR.  
 T. GRAHAM

ENG. APP.

REL. CK.

JP-241

90216

783

89119

88102

E.N. NO.

THIS DOCUMENT CONTAINS INFORMATION PROPRIETARY TO  
 UNIT RIG, A DIVISION OF TEREX CORPORATION. IT SHALL NOT BE  
 REPRODUCED, USED OR DISCLOSED TO ANYONE WITHOUT PRIOR  
 WRITTEN PERMISSION OF UNIT RIG.  
 © COPYRIGHT DATE --3-16-99--

A83640C

AXLER

ITM	QTY PER ASSY	COMPONENT	DESCRIPTION	
1	.00	FRONTAXLE	SEE TRUCK SPEC.	
2	2.00	83632C	40554129 SPINDLE, FRONT (MACH)	423-9657
3	2.00	82835B	40553650 KING PIN	431-5943
4	2.00	53899	40552004 BEARING, 7-1/2 DX	470-6086
5	2.00	53900	40517921 BEARING, 7" DX	470-6087
6	2.00	82838B	40911014 BUSHING, UPPER	431-5773
7	2.00	82839B	40911016 BUSHING, LOWER	431-5774
8	2.00	82993M	40553752 THRUST RING, BRONZE ANTI-ROTATION (MH)	431-5775
9	2.00	82836H	40911009 HOUSING-BEARING ANTI-ROTATION (MH)	431-5776
10	2.00	82837B	40552007 WASHER, THRUST	431-5778
11	2.00	82834B	COVER, KINGPIN	431-5779
12	16.00	27139	CAPSCR, HX, 5/8-11NC X 1-3/4 GR 8	7X0345
13	16.00	913240	40120611 WSHR, HRDND & GND-5/8 X 1.312 OD	8T4122
14	2.00	53014	40554130 SCR, SET, SKT 1-1/2-6NC X 3 GR 8 CONE POINT	470-6088
15	2.00	83634A	40911138 ROD, RADIUS, LOWER	473-1036
16	2.00	83633A	40911137 ROD, RADIUS, UPPER	473-1035
17	1.00	84077C	40553751 ROD, RADIUS(4" BRG)	431-5785
18	2.00	16965	40552330 BUSHING SELF ALIGN 4 4" I. D.	6V-3249
18	4.00	16965	BUSHING SELF ALIGN 4 4" I. D.	
19	1.00	80289C	PIN-RADIUS ROD	
19	1.00	80289C	40553648 PIN-RADIUS ROD	483-2753
20	2.00	56087-625	40552078 RING, RET. SELF LCK/INT FOR 6.250 BORE .094 X 6.422 GROOVE	434-5546
20	4.00	56087-625	RING, RET. SELF LCK/INT FOR 6.250 BORE .094 X 6.422 GROOVE	
21	2.00	80289E	PIN, 4" ECCENTRIC	
21	2.00	80289E	40553647 PIN, 4" ECCENTRIC	483-2754
22	2.00	83721E	20099683 SLEEVE, BEARING BORE FOR 4" SPHERICAL BEARING AND 3" LUG	474-2635
23	2.00	56086-700	40552429 RING, RET. SELF LCK/EXT FOR 7.000 SHAFT .094 X 6.818 GROOVE	470-6048
24	.00	82853A	40554127 SPACER, PIN	432-8101
25	2.00	55283	RING-DIRT	
25	8.00	55283	RING-DIRT	
25	10.00	55283	40553348 RING-DIRT	432-7860
26	5.00	82714A	RETAINER-PIN	
26	1.00	82714A	RETAINER-PIN	431-5789
27	.00	82853B	40911025 SPACER, PIN	432-8103

DR. DODEN

ENG. APP.

REL. CK. ELLIS

90937

E.N. NO.



AXLE ASSY, FRONT

SHEET 1 OF 2

A83640C

THIS DOCUMENT CONTAINS INFORMATION PROPRIETARY TO  
 UNIT RIG, A DIVISION OF TEREX CORPORATION. IT SHALL NOT BE  
 REPRODUCED, USED OR DISCLOSED TO ANYONE WITHOUT PRIOR  
 WRITTEN PERMISSION OF UNIT RIG.  
 © COPYRIGHT DATE

A83640C

ALVERN

ITM	QTY PER ASSY	COMPONENT	DESCRIPTION	
28	2.0	947095	40519631 BUSHING SELF ALIGNING	134-3250
28	2.0	947095	BUSHING SELF ALIGNING	
29	2.00	80289G	PIN, 5"	
29	2.00	80289G	40553532 PIN, 5"	483-2755
30	2.00	56087-775	RING, RET. SELF LCK/INT FOR 7.750 BORE .094 X 7.952 GROOVE	
30	2.00	56087-775	40553686 RING, RET. SELF LCK/INT FOR 7.750 BORE .094 X 7.952 GROOVE	432-9984
31	2.00	83721F	40552017 SLEEVE, BEARING BORE FOR 5" SPHERICAL BEARING AND 4" LUG.	431-8098
32	2.00	56086-850	40553754 RING, RET. SELF LCK/EXT FOR 8.500 SHAFT .094 X 8.288 GROOVE	432-9986
33	.00	82853C	SPACER, BEARING 5"	431-6086
35	2.00	82714C	RETAINER, PIN	
35	2.00	82714C	RETAINER, PIN	431-6086
36	2.00	10029	CAPSCR, HX, 1/2-13NC X 1-1/2 GR 5	
36	6.00	10029	40068840 CAPSCR, HX, 1/2-13NC X 1-1/2 GR 5	6C3241
36	10.00	10029	CAPSCR, HX, 1/2-13NC X 1-1/2 GR 5	
37	2.00	913745	40966517 WSHR, FL, HARDND, 1/2 X 1.000 DD	5P8245
37	6.00	913745	WSHR, FL, HARDND, 1/2 X 1.000 DD	
37	10.00	913745	WSHR, FL, HARDND, 1/2 X 1.000 DD	
38	6.00	55994	PIN-ROLL 3/4 O. D. X 2-1/2 LG	
99	.00	A83640	DWG ONLY, FRONT AXLE	

MT4400 BRONZE THRUST  
 RING W/ANTI-ROTATION  
 SPINDLE FOR USE  
 W/FACE TYPE SEAL

AXLE ASSY, FRONT

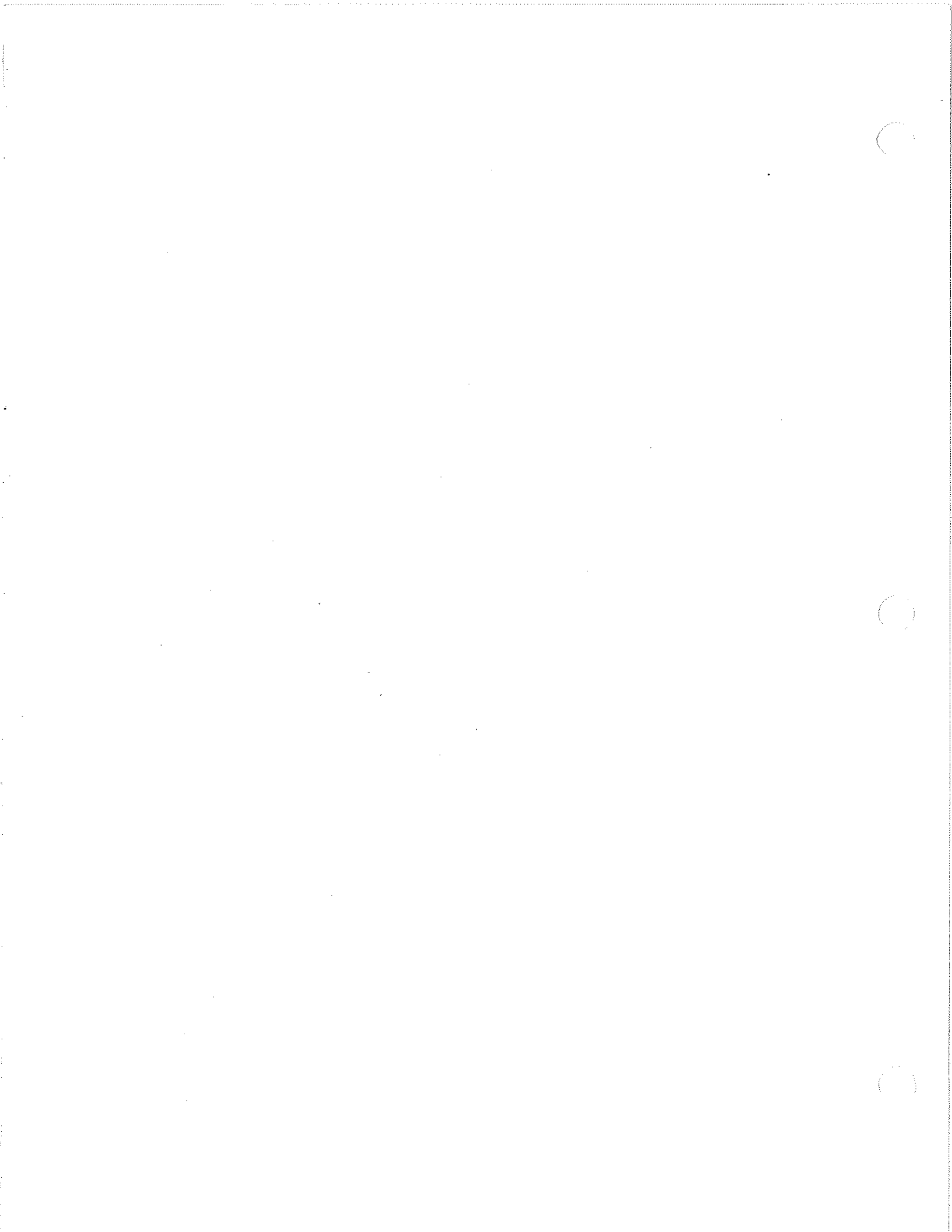


SHEET 2 OF 2

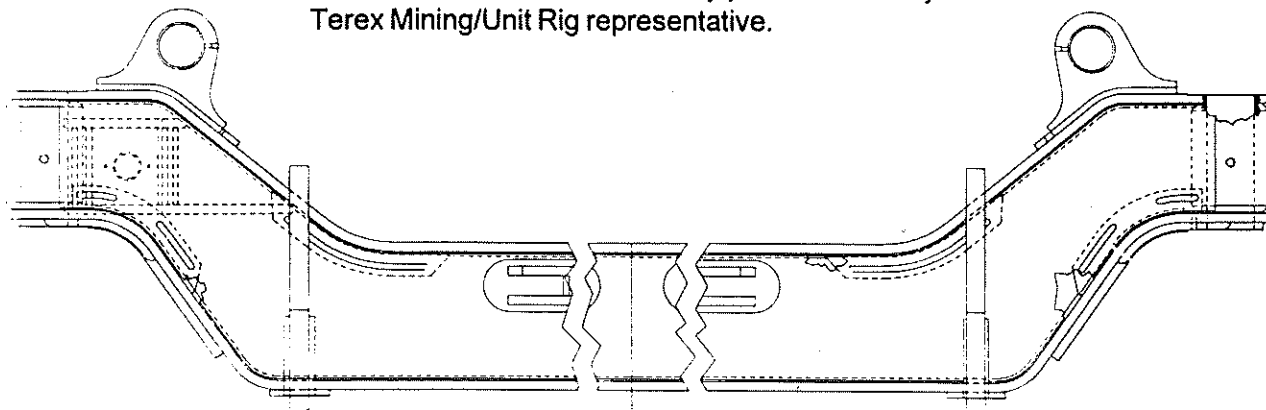
A83640C

90937

E.N. NO.



Assembly 83650A, FRONT AXLE ASSEMBLY  
contains proprietary information.  
If more information is necessary please contact your  
Terex Mining/Unit Rig representative.



UNIT RIG  
SERVICE PARTS

FRONT AXLE ASSEMBLY

83650A

E.N. 90377

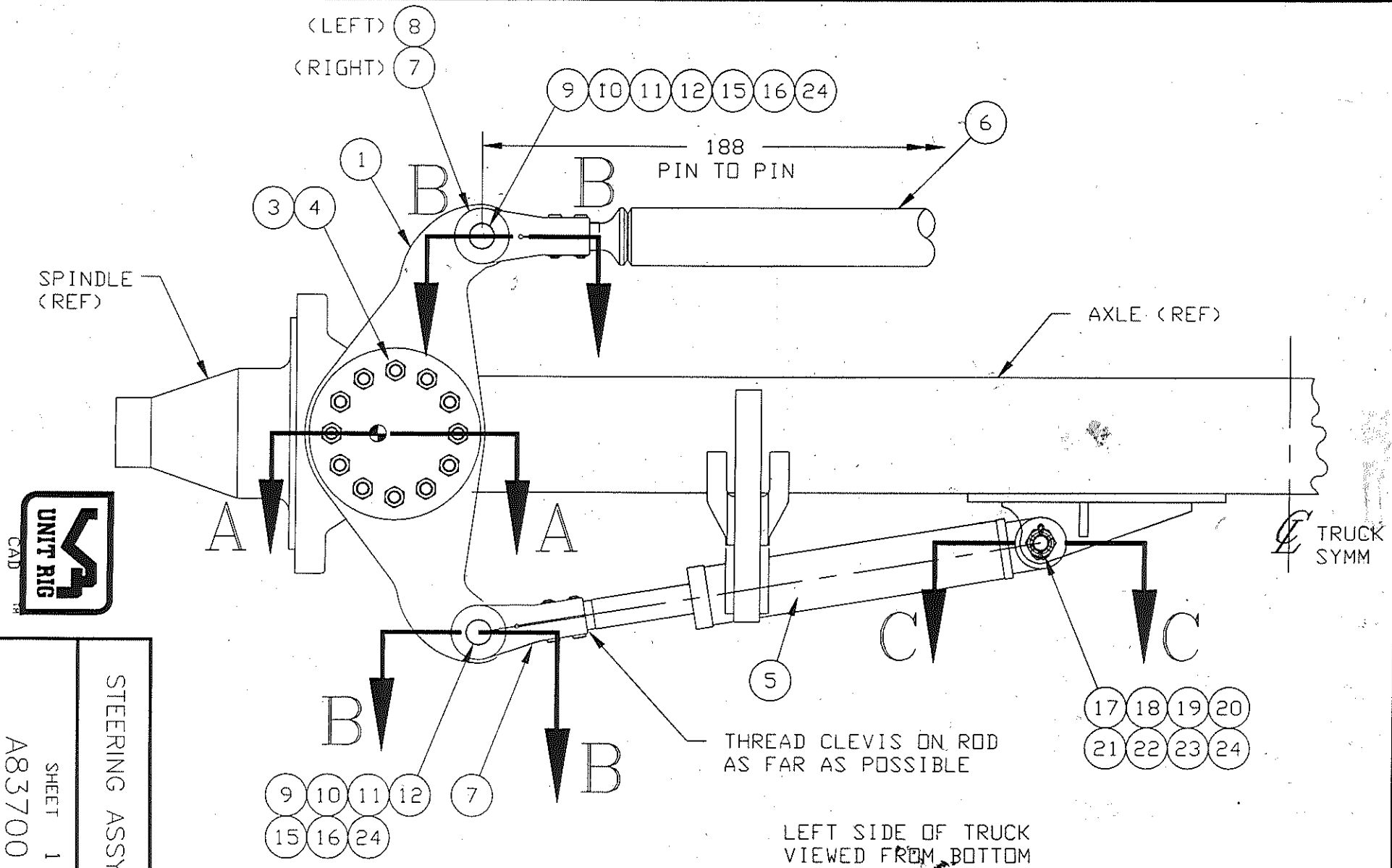
SHEET 1 OF 1

E.N. NO. 88102

REL. CR. T. DODDEN  
ENG. APPR. T. GRAHAM  
SR.

THIS DOCUMENT CONTAINS INFORMATION PROPRIETARY TO UNIT RIG, A DIVISION OF TEREX CORPORATION. IT SHALL NOT BE REPRODUCED, USED OR DISCLOSED TO ANYONE WITHOUT PRIOR WRITTEN PERMISSION OF UNIT RIG.  
© COPYRIGHT DATE 6/13/94

A83700



STEERING ASSY, MEC  
SHEET 1 OF 2  
A83700

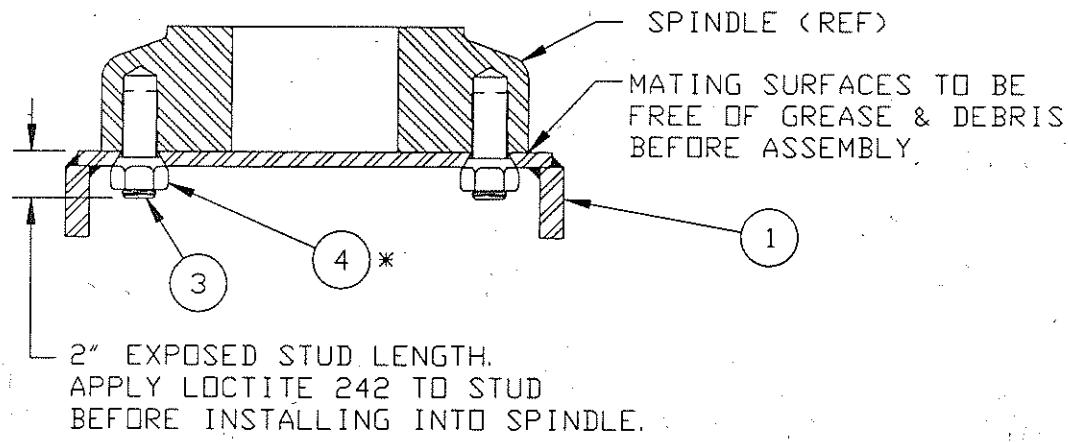
E.N. NO. 88102

REL. CK.

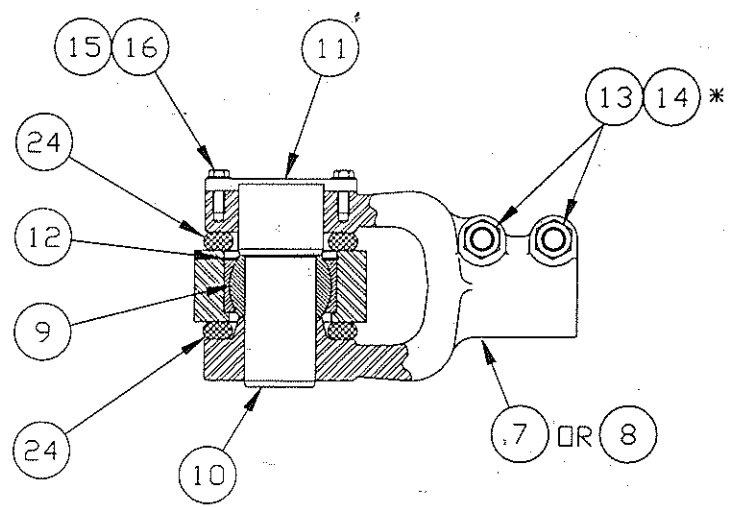
DR. T. GRAHAM  
ENGR. APPR.

THIS DOCUMENT CONTAINS INFORMATION PROPRIETARY TO UNIT RIG DIVISION OF TEREX CORPORATION. IT SHALL NOT BE REPRODUCED, USED OR DISCLOSED TO ANYONE WITHOUT PRIOR WRITTEN PERMISSION OF UNIT RIG.  
© COPYRIGHT DATE \_\_\_\_\_

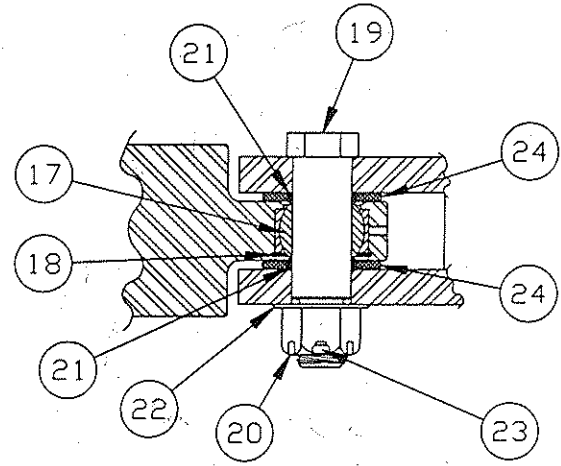
A83700



SEC A-A



SEC B-B

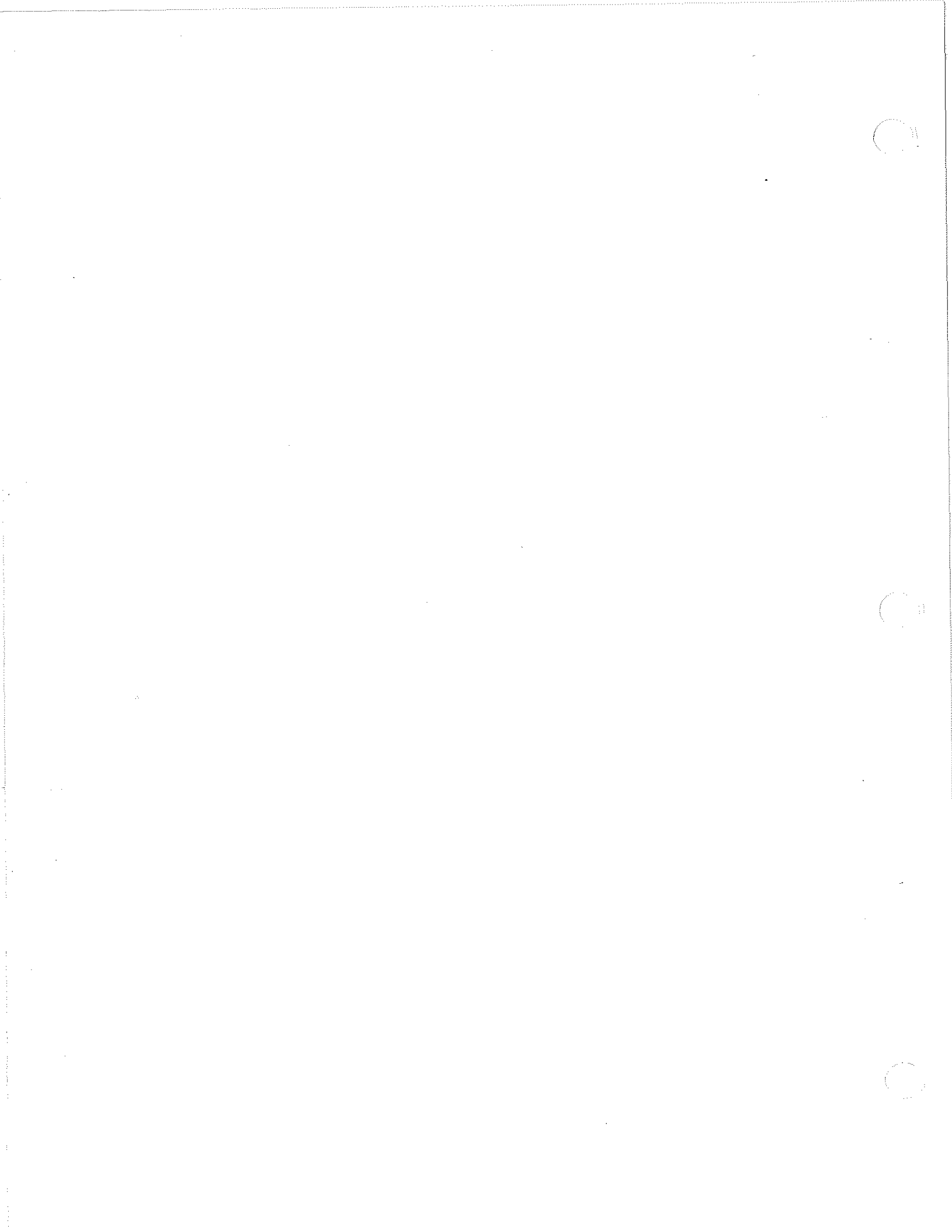


SEC C-C

\* TORQUE PER 02-475



STEERING ASSY, MECH  
SHEET 2 OF 2  
A83700



THIS DOC CONTAINS INFORMATION PROPRIETARY TO  
 UNIT RIG, DIVISION OF TEREX CORPORATION. IT SHALL NOT BE  
 REPRODUCED, USED OR DISCLOSED TO ANYONE WITHOUT PRIOR  
 WRITTEN PERMISSION OF UNIT RIG.  
 © COPYRIGHT DATE

A83700A

AUGUST

ITM	QTY PER ASSY	COMPONENT	DESCRIPTION
1	2.00	82845C	ARM, STEERING
3	24.00	82852A	STUD, 1-1/2-12 X 4-1/2 GRADE 8 <span style="float: right;">→ stock # 373732</span>
4	24.00	82846A	NUT, TAPER NOSE 1-1/2 1-1/2-12NF GRADE 8 <span style="float: right;">373822</span>
5	2.00	84092E *	CYLINDER, STEER 6X28
6	1.00	82847B	ROD, TIE
7	3.00	83636B	YOKE, STRG(RH THREADS)
8	1.00	83636A	YOKE, STRG(LH THREADS)
9	4.00	16927	BUSHING SELF ALIGNING 3" I. D.
10	4.00	80289F	PIN-RADIUS ROD
11	4.00	82714B	RETAINER-PIN
12	4.00	1000519	RING, RETAINING INT FOR 4.75" BORE .079 X 4.89 GROOVE
13	8.00	10100	CAPSCR, HX, 1-8NC X 6 GR 5
14	8.00	12333	NUT-HEX, FLXLC 1-8
15	8.00	10029	CAPSCR, HX, 1/2-13NC X 1-1/2 GR 5
16	8.00	913745	WSHR, FL, HARDND, 1/2 X 1.000 OD
17	2.00	19614	BUSHING-SELF ALIGN
18	2.00	11399	RING, RETAINING INT FOR 3.938 BORE .120 X 4.174 GROOVE
19	2.00	61443G	PIN STEERING
20	2.00	17045	NUT SLOTTED
21	4.00	61947J	SPACER, BEARING
22	2.00	19555	WSHR, FL, HARDND, 2" X 3-3/4 OD NARROW
23	2.00	19329	COTTER-PIN 3/8 X 3, 3/8 DRL
24	12.00	70331B	SEAL GREASE
99	.00	A83700	DWG ONLY, MECH STRNG

FOR MT4400  
(STEERING CYLINDER  
W/TWO ROD SCRAPERS)

DR.  
 Robinson  
 ENG. APP.  
 NIELSEN  
 REL. CK.  
 ELLIS

90961

00247

88758

88102

E.N. NO.

\*SEE SERVICE PARTS



STEERING ASSY., MECH.

SHEET 1 OF 1

ASSY.  
NO. A83700A

A83800

THIS DOCUMENT CONTAINS INFORMATION PROPRIETARY TO UNIT RIG, A DIVISION OF TEREX CORPORATION. IT SHALL NOT BE REPRODUCED, USED OR DISCLOSED TO ANYONE WITHOUT PRIOR WRITTEN PERMISSION OF UNIT RIG.  
© COPYRIGHT DATE 12/16/92

DR. T. DODEN  
ENG. APP. G. GREENE  
REL. CK.

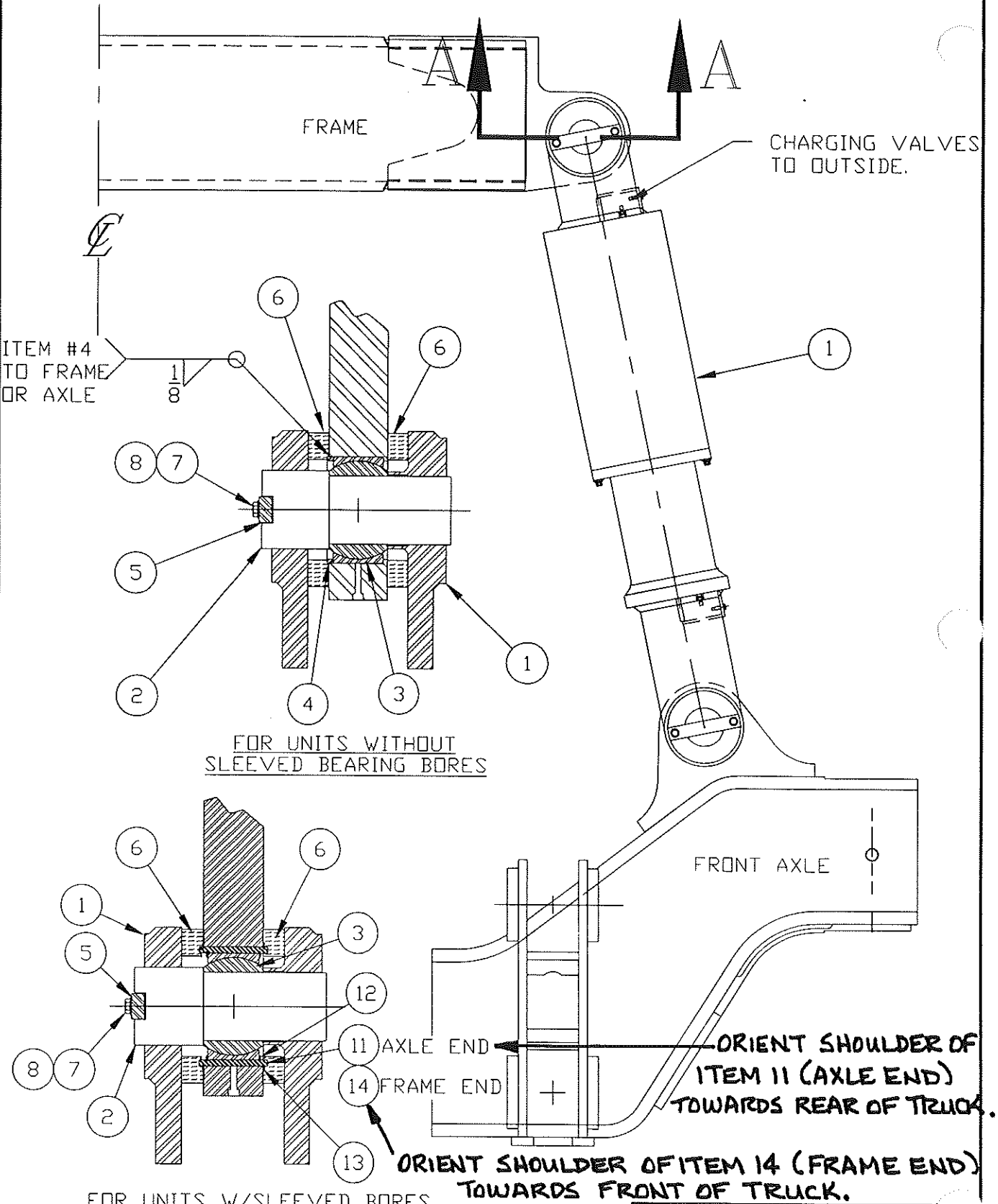
SP-240

88405

87663

87018

E.N. NO.



SEC A-A

TYPICAL BOTH ENDS



SUSPENSION ASSY, FRONT

SHEET 1 OF 1

A83800

THIS DOCUMENT CONTAINS INFORMATION PROPRIETARY TO UNIT RIG, A DIVISION OF TEREX CORPORATION. IT SHALL NOT BE REPRODUCED, USED OR DISCLOSED TO ANYONE WITHOUT PRIOR WRITTEN PERMISSION OF UNIT RIG.

A 83800H

Copyright date

ITM	QTY PER ASSY	COMPONENT	DESCRIPTION
S 001	1	* 55895 *	SUSPENSION, FRONT
002	2	80289G	PIN, 5"
003	REF 1	947095	BUSHING SELF ALIGNING
003	1	947095	BUSHING SELF ALIGNING
005	2	82714C	RETAINER, PIN
006	4	55283	RING-DIRT
007	4	10029	CAPSCR, HX, 1/2-13NC X 1-1/2 GR 5
008	4	913745	WSHR, FL, HARDND, 1/2 X 1.000 OD
011	1	83721F	SLEEVE, BEARING BORE FOR 5" SPHERICAL BEARING AND 4" LUG.
012	1	56087-775	RING, RET. SELF LCK/INT FOR 7.750 BORE .094 X 7.952 GROOVE
012	REF 1	56087-775	RING, RET. SELF LCK/INT FOR 7.750 BORE .094 X 7.952 GROOVE
013	1	56086-850	RING, RET. SELF LCK/EXT FOR 8.500 SHAFT .094 X 8.288 GROOVE
013	REF 1	56086-850	RING, RET. SELF LCK/EXT FOR 8.500 SHAFT .094 X 8.288 GROOVE
014	REF 1	83721H	SLEEVE, BEARING BORE FOR 5" SPHERICAL BEARING & 3-1/2" LUG.
020	REF 1	A83800	DWG ONLY, FRT SUSP

MT-4400 \*SMR\* SUSPEN.

DR. CKR  
 ENG. APP. *FWAN*  
 REL. CK. *Ellis*

90320  
 89983  
 89533  
 E.N. NO.

\*SEE SERVICE PARTS



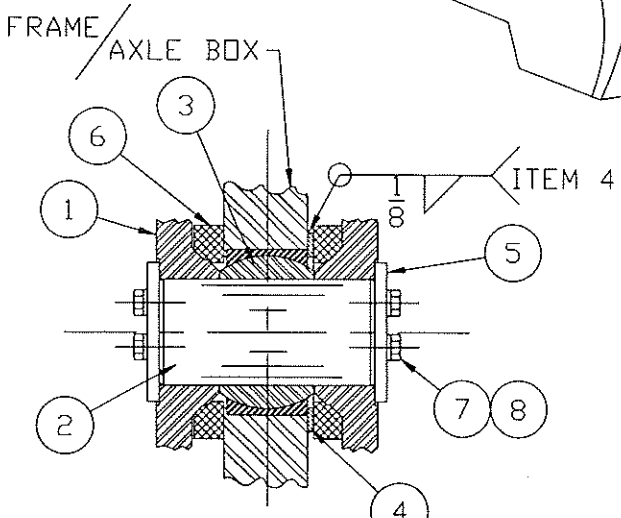
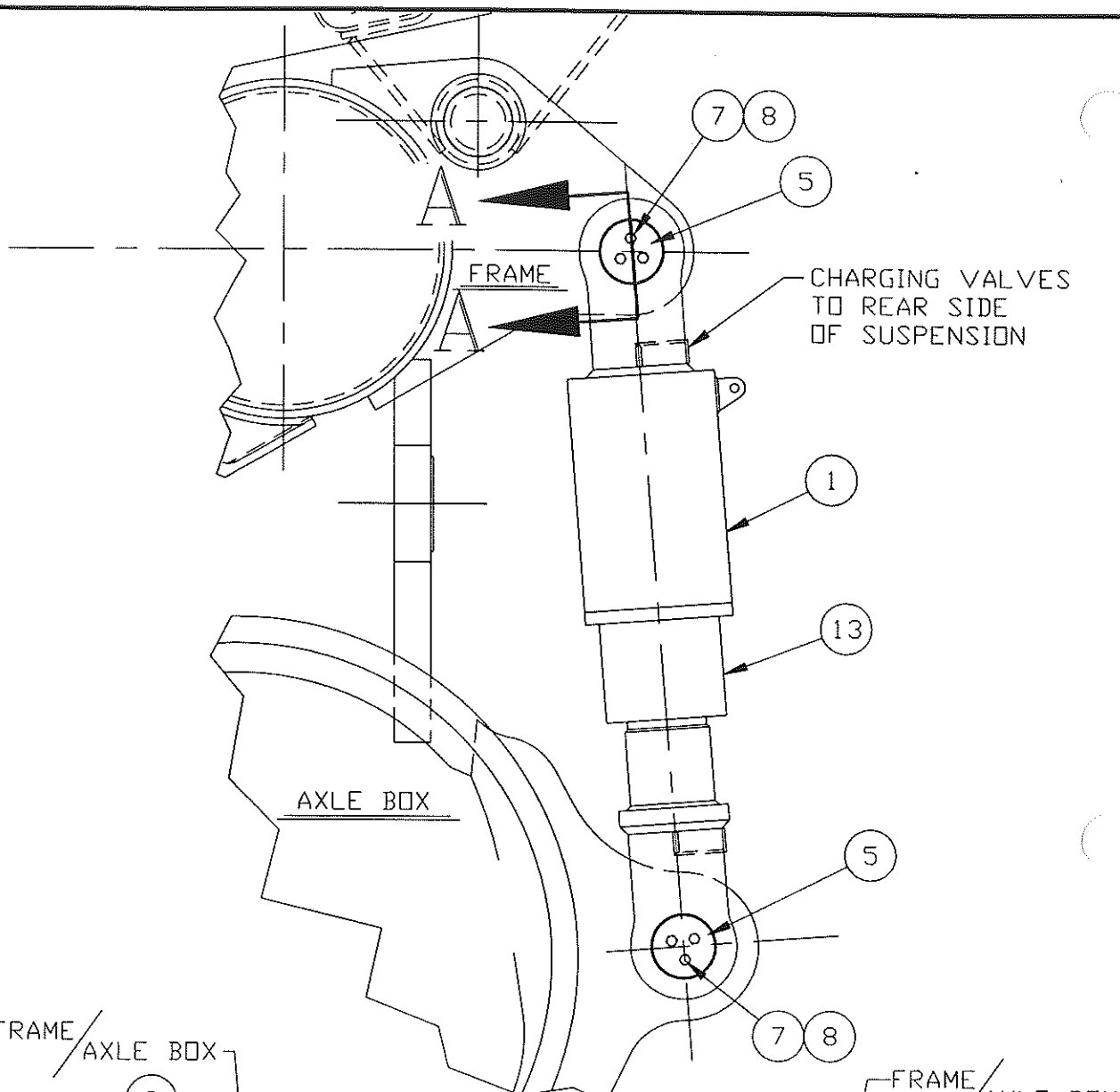
FRONT SUSPENSION ASSY  
 SHEET 1 OF 1  
 ASSY.  
 NO. A83800H

A83801

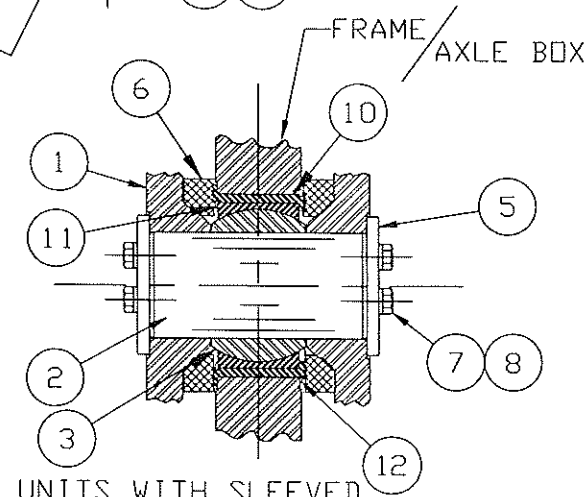
AVERT

THIS DOCUMENT CONTAINS INFORMATION PROPRIETARY TO UNIT RIG, A DIVISION OF TEREX CORPORATION. IT SHALL NOT BE REPRODUCED, USED OR DISCLOSED TO ANYONE WITHOUT PRIOR WRITTEN PERMISSION OF UNIT RIG.  
© COPYRIGHT DATE 12/16/92

DR. T. DODEN  
ENG. APP.  
G. GREENE  
REL. CK.



UNITS WITHOUT SLEEVED BEARING BORES



UNITS WITH SLEEVED BEARING BORES

SEC A - A  
AT SUSPENSION PINS



SUSP. ASSY., REAR

SHEET 1 OF 1

A83801

88643  
87663  
87018  
E.N. NO.

A83801F

THIS DOCUMENT CONTAINS INFORMATION PROPRIETARY TO UNIT RIG, A DIVISION OF TEREX CORPORATION. IT SHALL NOT BE REPRODUCED, USED OR DISCLOSED TO ANYONE WITHOUT PRIOR WRITTEN PERMISSION OF UNIT RIG.

Copyright date

ITEM	QTY PER ASSY	COMPONENT	DESCRIPTION
S 001	1	55896	SUSPENSION, REAR
002	2	83043B	PIN, 6"
003	1	55499	BEARING, SPHERICAL 6"
003	1	55499	BEARING, SPHERICAL 6"
005	4	78248C	RETAINER, PIN
006	4	55389	RING, DIRT
007	4	18978	CAPSCR, HX, 1-BNC X 1-1/2 GR 5
008	4	10186	WSHR, LK, HELI, 1" X 1.661 OD
010	1	83721G	SLEEVE, BEARING BORE FOR 6" SPHERICAL BEARING & 3-1/2" LUG.
010	1	83721G	SLEEVE, BEARING BORE FOR 6" SPHERICAL BEARING & 3-1/2" LUG.
011	2	56087-875	RING, RET. SELF LCK/INT FOR 8.750 BORE .094 X 8.972 GROOVE
011	2	56087-875	RING, RET. SELF LCK/INT FOR 8.750 BORE .094 X 8.972 GROOVE
012	2	56086-950	RING, RET. SELF LCK/EXT FOR 9.500 SHAFT .094 X 9.268 GROOVE
012	2	56086-950	RING, RET. SELF LCK/EXT FOR 9.500 SHAFT .094 X 9.268 GROOVE
020	REF 1	A83801	DWG ONLY, REAR SUSP.

MT-4400 "SMR" SUSPEN.

DR.  
WFR

ENG. APP.

REL. CK.

*MASSIE*

90198

89983

89533

E.N. NO.

\*SEE SERVICE PARTS



REAR SUSPENSION ASSY

SHEET / OF /  
ASSY.  
NO. A83801F

A83829

ALBERT

THIS DOCUMENT CONTAINS INFORMATION PROPRIETARY TO UNIT RIG, A DIVISION OF TEREX CORPORATION. IT SHALL NOT BE REPRODUCED, USED OR DISCLOSED TO ANYONE WITHOUT PRIOR WRITTEN PERMISSION OF UNIT RIG.

© COPYRIGHT DATE 2-1-93

DR. MASSIE  
ENG. APP. DODEN  
REL. CK. ELLIS

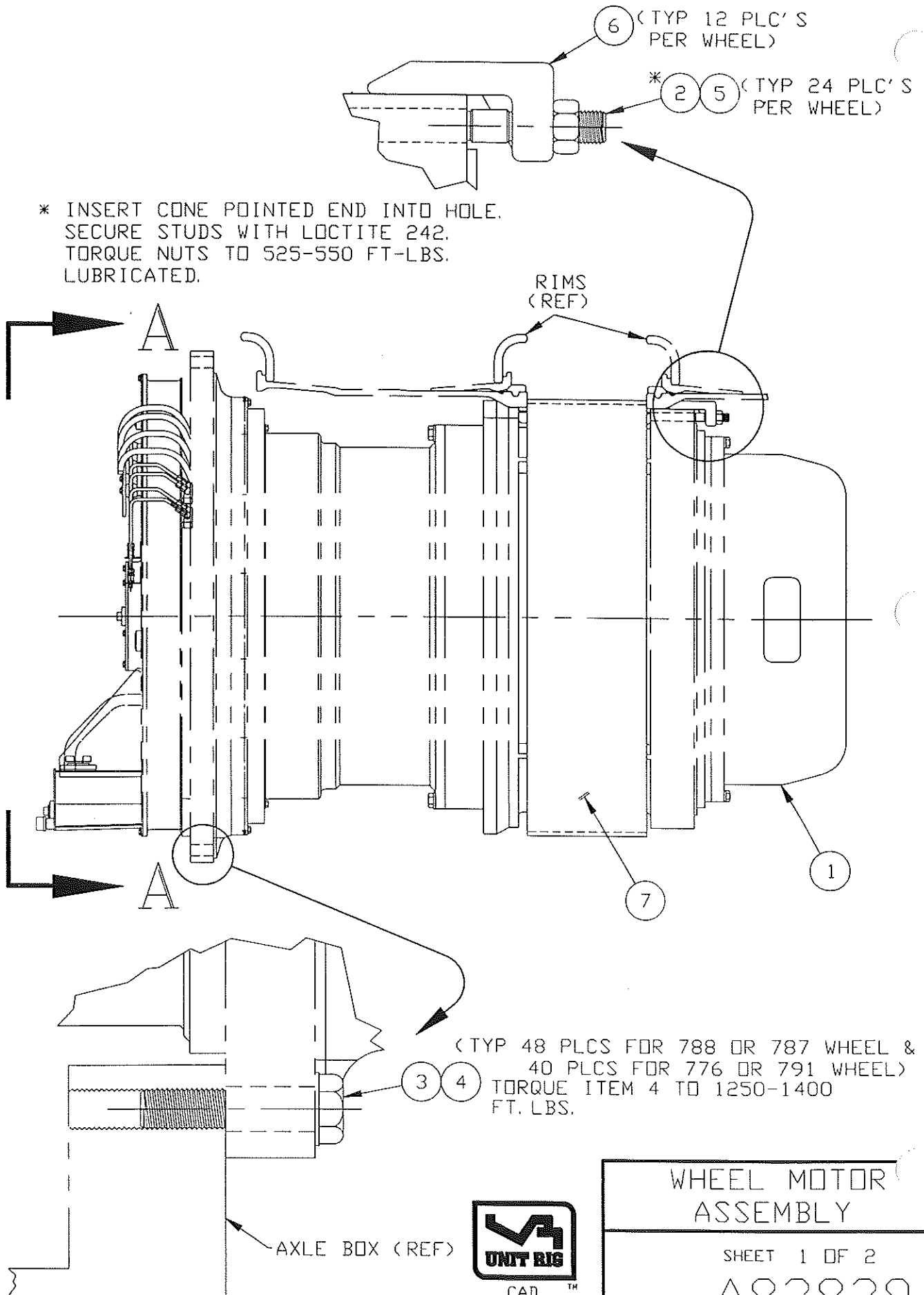
90266

89843

87611

87100

E.N. NO.



WHEEL MOTOR ASSEMBLY

SHEET 1 OF 2

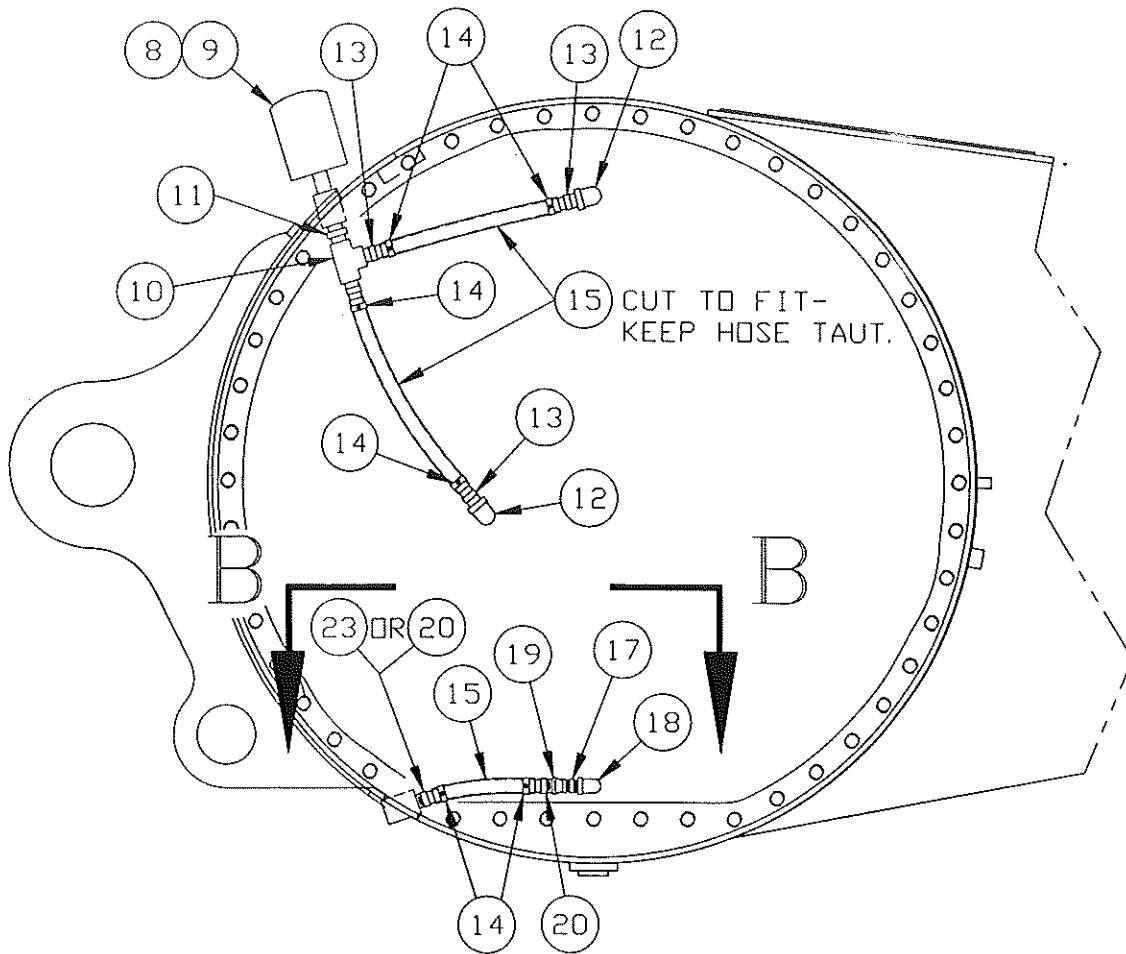
A83829

THIS DOCUMENT CONTAINS INFORMATION PROPRIETARY TO  
 TEREX CORPORATION. IT SHALL NOT BE  
 REPRODUCED, USED OR DISCLOSED TO ANYONE WITHOUT PRIOR  
 WRITTEN PERMISSION OF UNIT RIG.

A83829

ASVERT

© COPYRIGHT DATE

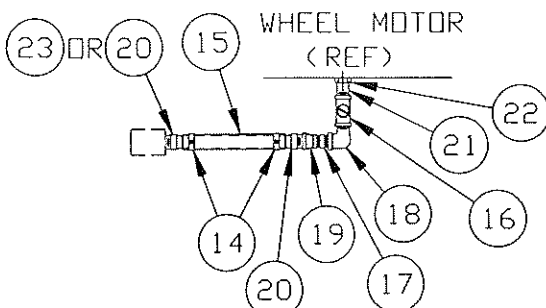


VIEW A-A

SYMMETRICAL ABOUT TRUCK CENTERLINE

ITEM 15 INITIAL CUT LENGTHS

WHEEL MOTOR	BREATHER HOSES		SUMP DRAINS	
	UPPER(2)	LOWER(2)	LEFT	RIGHT
776HS	26	25	10	16
791	26	25	10	16
776KS				
788				
787	21	30	12	12



VIEW B-B



WHEEL MOTOR  
ASSEMBLY

SHEET 2 OF 2

A83829

DR.  
 MASSIE  
 ENG. APP.  
 REL. CK.  
 90266  
 9843  
 87611  
 87100  
 E.N. NO.

THIS DOCUMENT CONTAINS INFORMATION PROPRIETARY TO UNIT RIG, A DIVISION OF TEREX CORPORATION. IT SHALL NOT BE REPRODUCED, USED OR DISCLOSED TO ANYONE WITHOUT PRIOR WRITTEN PERMISSION OF UNIT RIG.

A83829M

10-3-96

© Copyright date

ITM	QTY. PER ASSY	COMPONENT.	DESCRIPTION
001	REF 2	WHEEL	SEE TRUCK SPEC
002	48 40554016	82253A	BOLT, STUD 1"-14 NS 468-2778 X 7" LG
003	96 40554523	17026	WSHR, FL, HARDND, 1-1/4 145-0819 X 2.750 OD
004	96 40553830	22838	CAPSCR, HX, 1-1/4-7NC 145-0757 X 5 GR 8
005	48 40553328	24565	NUT, HVYHX FLG, 1-14UNS 450-7323
006	24 40629549	83173B	CLAMP-WHEEL 404-4377 WITH JACKOUT HOLE.
007	40910587 2	61372G	SPACER, BAND 467-7229 16 X 57 FOR 40 X 57 TIRES
008	40912356 2	24465	FILTER AIR 145-1044
009	40551790 2	55392	ADAPTER, BREATHER 146-9820
010	2	10356	TEE, PIPE, 1-1/4NPT X 1.750 MI 150PSI
011	2	19670	ADAPTER, NIPPLE, HEX 1-1/4 NPTF, MALE
012	4	52914	ELBOW-ST 45DEG 1-1/4NPT 150PSI MI
013	4	18286	NIPPLE, COMBINATION
013	4	18286	NIPPLE, COMBINATION
014	12	18287	CLAMP HOSE
015	175 IN	52946	HOSE, HEATER
016	2	1002552	VALVE (DWG 1101762) 1"NPTF, FEMALE
017	2	52287	NIPPLE, PIPE, 1NPT SCH 40 CLOSE
018	2	16019	ELBOW-ST. 90 1NPT
019	2	17611	COUPLING-PIPE RED.
020	2	950422	NIPPLE-COMBINATION
021	REF 1	NOT-USED	PART NOT USED
022	REF 1	NOT-USED	PART NOT USED
023	2	84746A	NIPPLE COMBINATION
099	REF 1	A83829	DWG ONLY, WHL MTR ASSY

787 WHEEL WITH HUB FOR 57" DIA RIMS. SPACER BAND, STUDS, CLAMPS, & HARDWARE. PLUMBING INCL ALL HOSES & FITTINGS FOR BREATHERS & SUMPS. WHEELCLAMPS INCLUDE JACKOUT HOLES.

DR. FUJIAN

ENCL APP. *MAM*

RFL. CK. *Fujian*

898A3

EX. NO.



WHEEL MOTOR ASSY

SHEET / OF /

ASSY.

NO. A83829M

A84162

AVERT

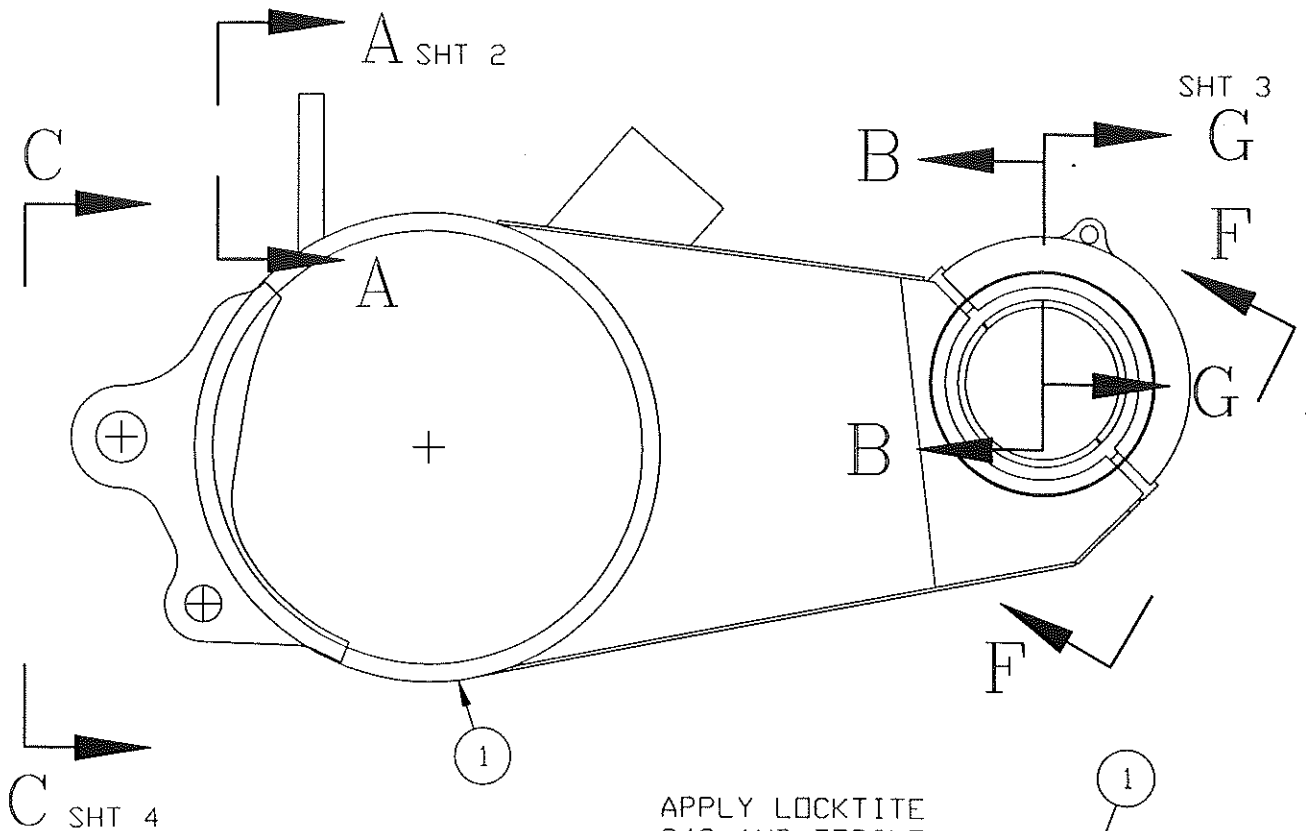
THIS DOCUMENT CONTAINS INFORMATION PROPRIETARY TO  
UNIT RIG, A DIVISION OF TEREX CORPORATION. IT SHALL NOT BE  
REPRODUCED, USED OR DISCLOSED TO ANYONE WITHOUT PRIOR  
WRITTEN PERMISSION OF UNIT RIG.  
© COPYRIGHT DATE 8/12/94

DR.  
T. DODEN  
ENG. APP.  
B. A. M.  
REL. CK.

90491

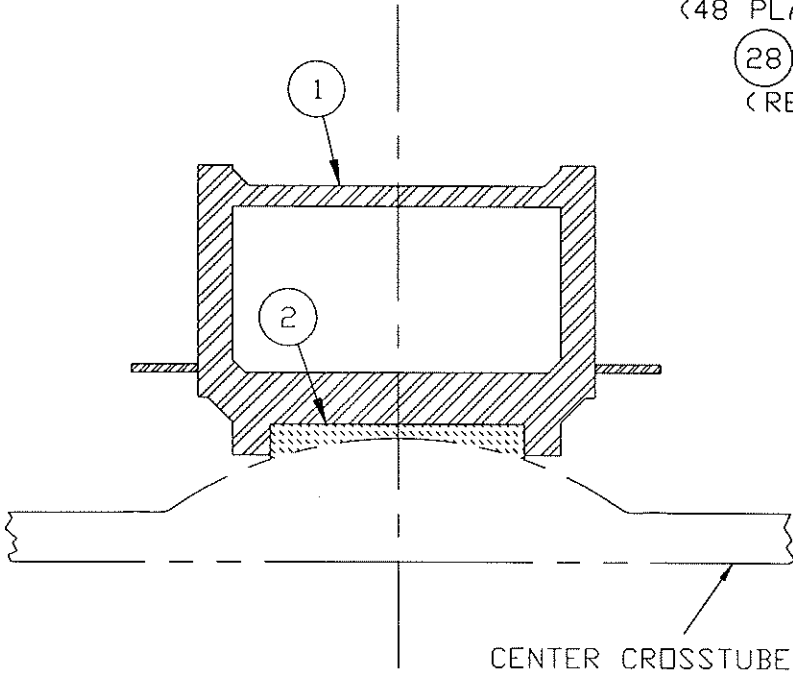
88335

E.N. NO.



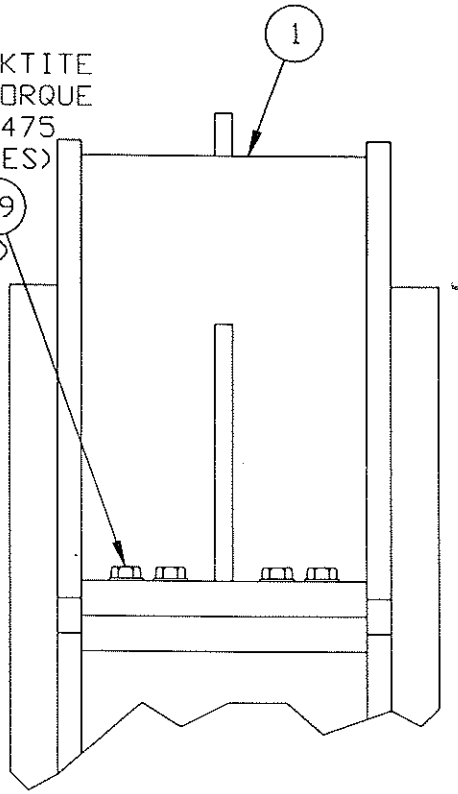
APPLY LOCKTITE  
242 AND TORQUE  
PER 02-475  
(48 PLACES)

(28) (29)  
(REF)



CENTER CROSS-TUBE  
(REF)

SEC B-B



VIEW F-F

AXLE BOX  
MOUNTING ASSY.

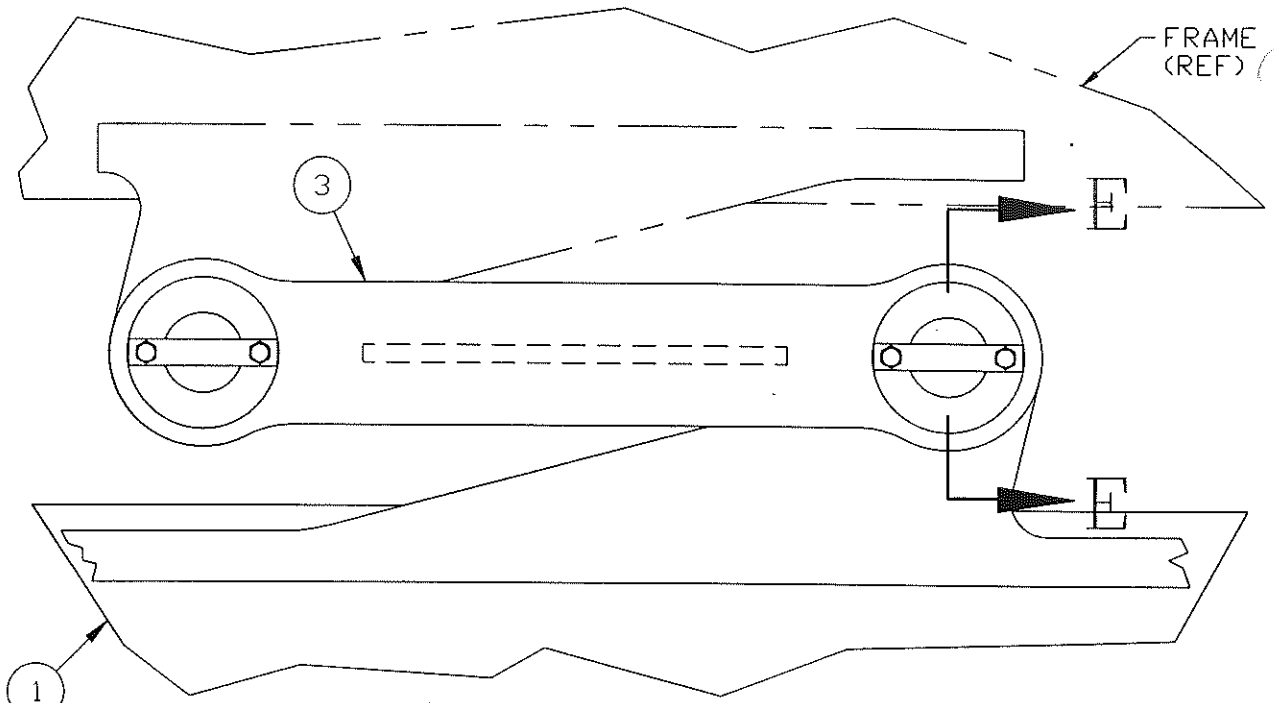
SHEET 1 OF 5

A84162

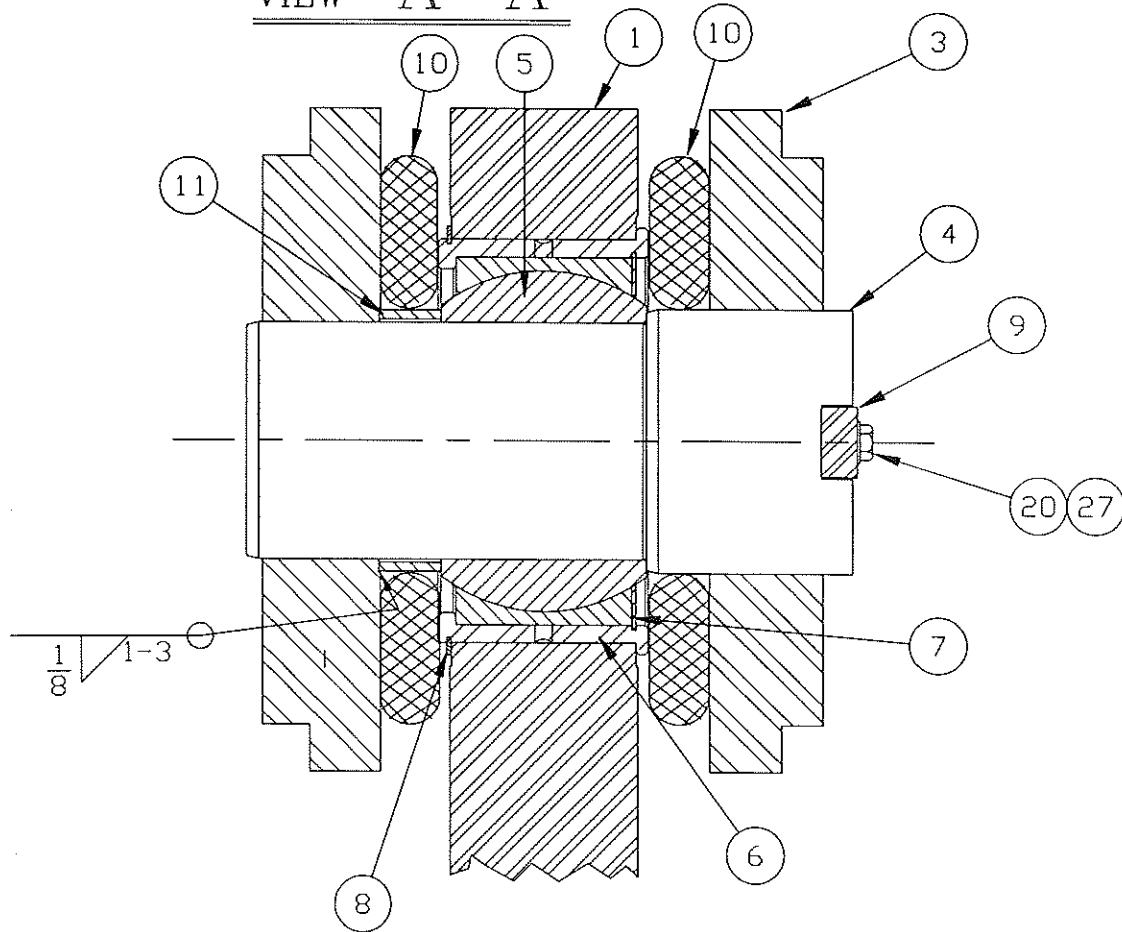


THIS DOCUMENT CONTAINS INFORMATION PROPRIETARY TO  
 UNIT RIG, A DIVISION OF TEREX CORPORATION. IT SHALL NOT BE  
 REPRODUCED, USED OR DISCLOSED TO ANYONE WITHOUT PRIOR  
 WRITTEN PERMISSION OF UNIT RIG.  
 © COPYRIGHT DATE 8/12/94

A84162



VIEW A-A



SEC E-E

2 PLACES



CAD™

AXLE BOX  
 MOUNTING ASSY.

SHEET 2 OF 5

A84162

DR.  
 T.DODEN  
 ENG. APP.  
 REL. CK.

90491

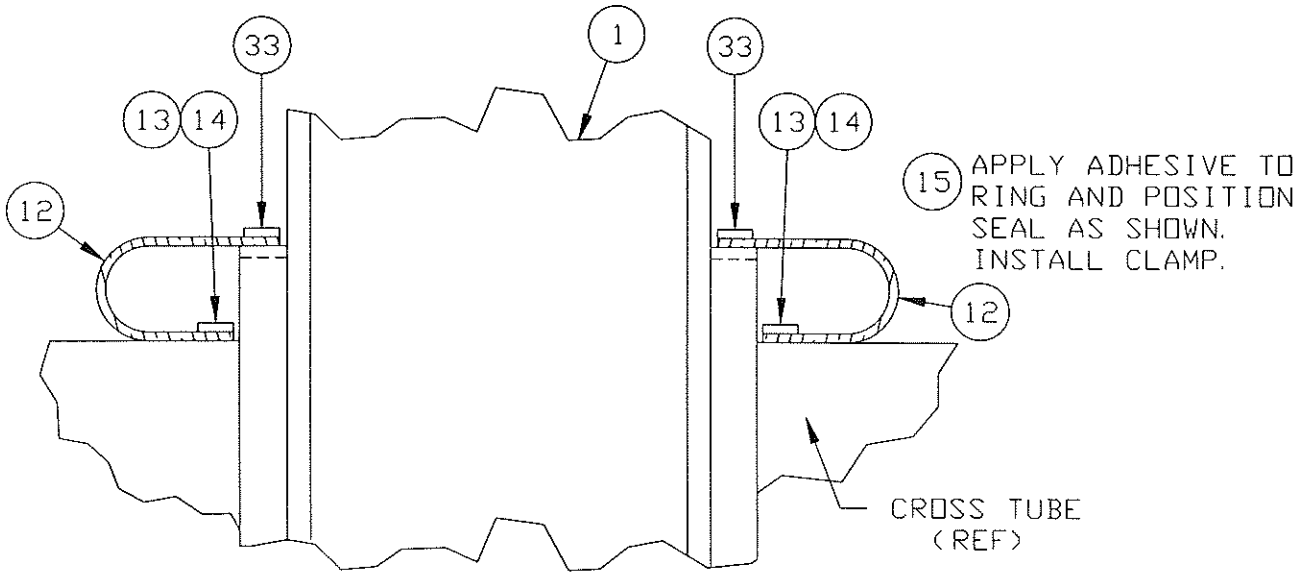
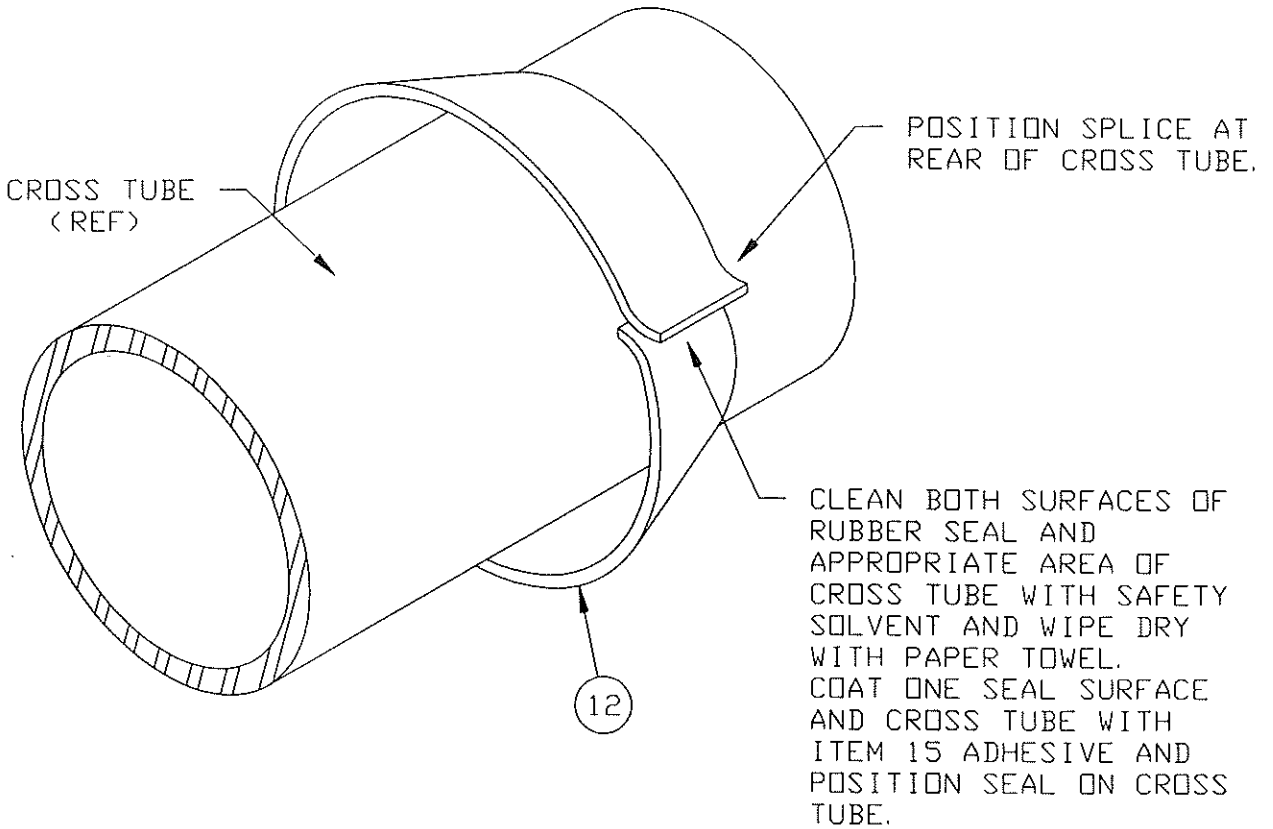
88335

E.N. NO.

THIS DOCUMENT CONTAINS INFORMATION PROPRIETARY TO  
 UNIT RIG, A DIVISION OF TEREX CORPORATION. IT SHALL NOT BE  
 REPRODUCED, USED OR DISCLOSED TO ANYONE WITHOUT PRIOR  
 WRITTEN PERMISSION OF UNIT RIG.  
 © COPYRIGHT DATE 8/12/94

A84162

ADVERS



NOTE:  
 POSITION SCREW PORTION OF ITEM 13 TO REAR OF CROSS TUBE.

SEC G - G

90491

88335

E.N. NO.



AXLE BOX  
 MOUNTING ASSY.

SHEET 3 OF 5

A84162

A84162

ALBERT

THIS DOCUMENT CONTAINS INFORMATION PROPRIETARY TO UNIT RIG, A DIVISION OF TEREX CORPORATION. IT SHALL NOT BE REPRODUCED, USED OR DISCLOSED TO ANYONE WITHOUT PRIOR WRITTEN PERMISSION OF UNIT RIG.  
© COPYRIGHT DATE 8/12/94

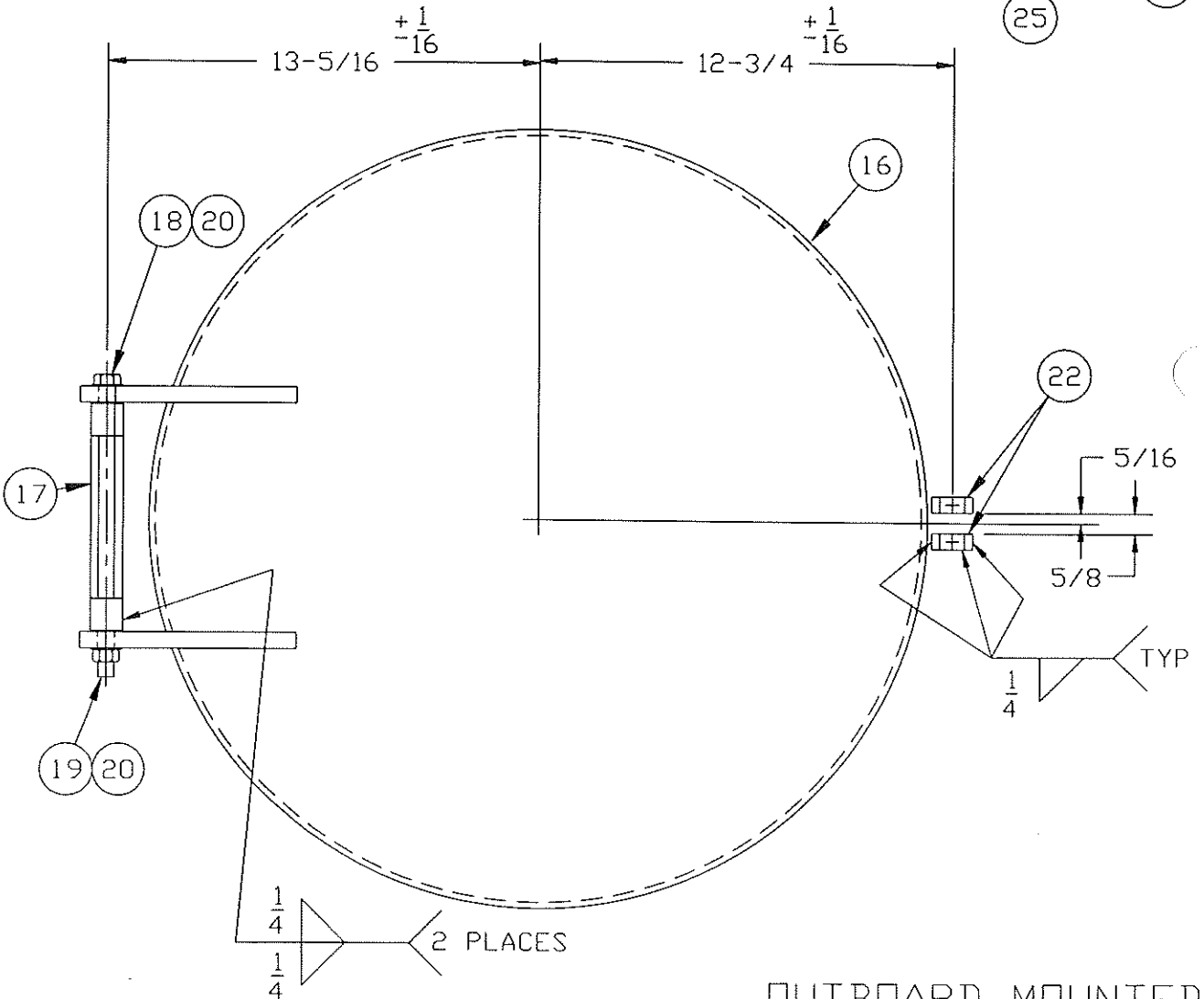
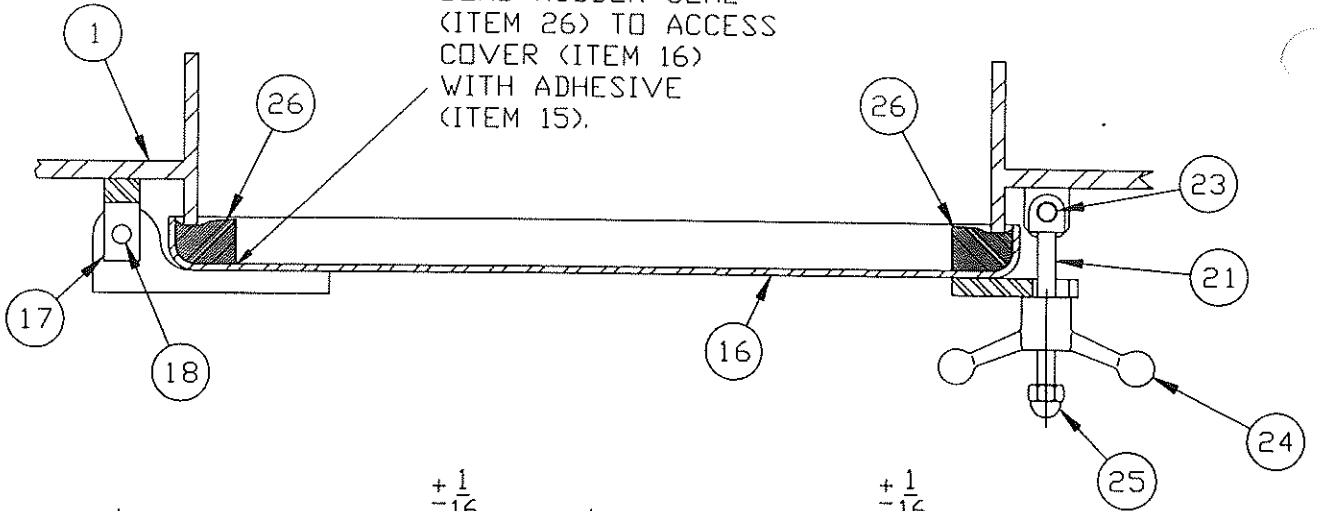
DR.  
T. DODEN  
ENG. APP.  
REL. CK.

90491

88335

E.N. NO.

BOND RUBBER SEAL  
(ITEM 26) TO ACCESS  
COVER (ITEM 16)  
WITH ADHESIVE  
(ITEM 15).



OUTBOARD MOUNTED  
DOOR

VIEW C-C

AXLE BOX  
MOUNTING ASSY.

SHEET 4 OF 5

A84162



THIS DOCUMENT CONTAINS INFORMATION PROPRIETARY TO  
 UNIT RIG, A DIVISION OF TEREX CORPORATION. IT SHALL NOT BE  
 REPRODUCED, USED OR DISCLOSED TO ANYONE WITHOUT PRIOR  
 WRITTEN PERMISSION OF UNIT RIG.  
 © COPYRIGHT DATE 8/12/94

A84162

ALVESCZ

DR.  
T. DODEN

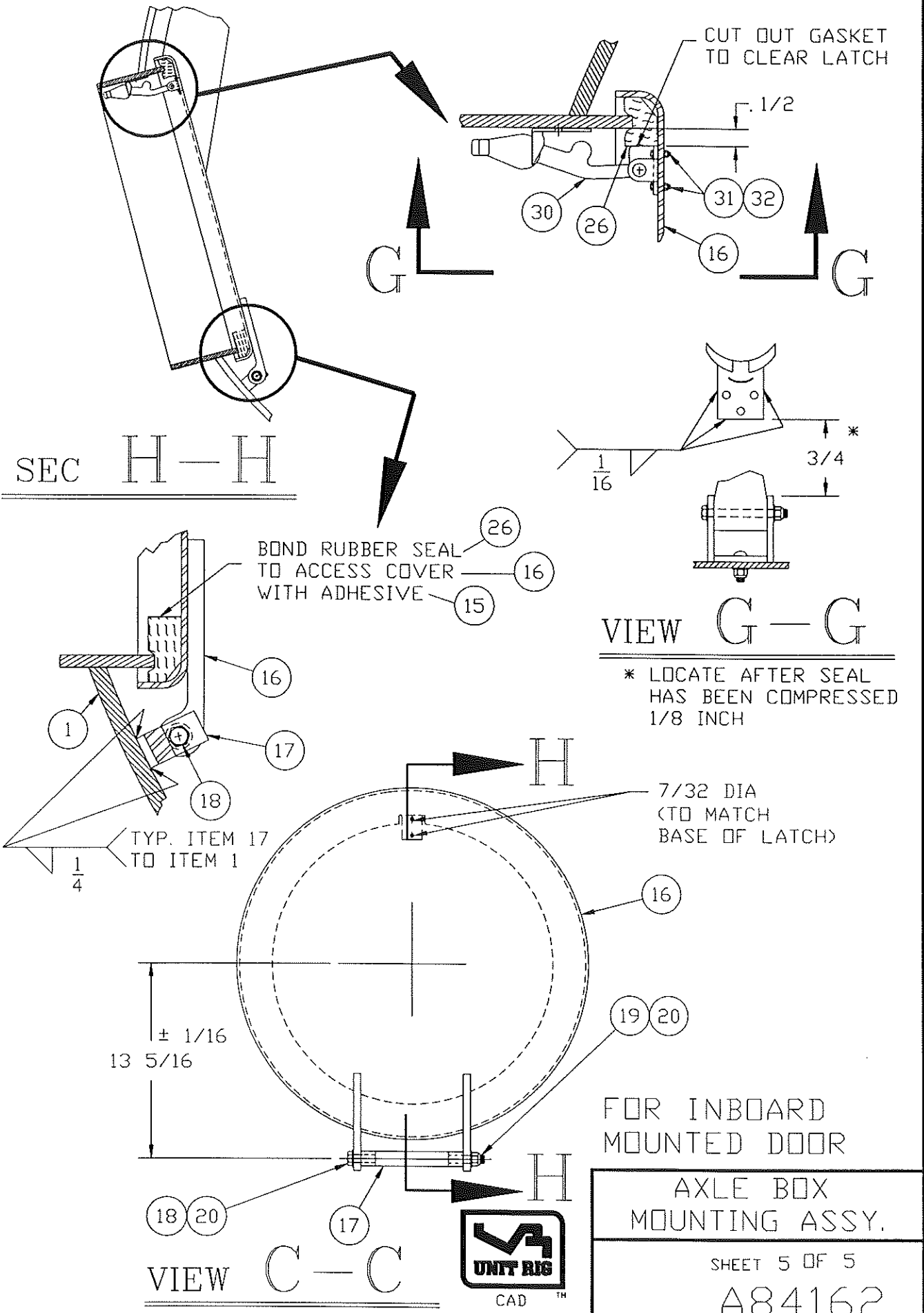
ENG. APP.

REL. CK.

90491

88335

E.N. NO.



CUT OUT GASKET TO CLEAR LATCH

SEC H-H

VIEW G-G

\* LOCATE AFTER SEAL HAS BEEN COMPRESSED 1/8 INCH

FOR INBOARD MOUNTED DOOR  
 AXLE BOX MOUNTING ASSY.

AXLE BOX MOUNTING ASSY.

SHEET 5 OF 5

A84162

THIS DOCUMENT CONTAINS INFORMATION PROPRIETARY TO UNIT RIG. A DIVISION OF TEREX CORPORATION. IT SHALL NOT BE REPRODUCED, USED OR DISCLOSED TO ANYONE WITHOUT PRIOR WRITTEN PERMISSION OF UNIT RIG.

Copyright date

DR.  
BAM  
ENG. APP.

REL. CK.

*Ellis*

90498

89983

A84162A

S. A. DIVISION OF TEREX CORPORATION. IT SHALL NOT BE REPRODUCED, USED OR DISCLOSED TO ANYONE WITHOUT PRIOR WRITTEN PERMISSION OF UNIT RIG.

88758

88405

88335

E.N. NO.

A84162A

ITM	QTY PER ASSY	COMPONENT	DESCRIPTION
001	REF 1	AXLEBOX	SEE TRUCK SPEC.
002	140551925	84149A	BEARING, NOSE CONE PVT FOR 29" NOSE CONE
003	140911041	83026C	ROD, PANHARD REAR AXLE 147-7780BE
004	240553532	80289G	PIN, 5" 483-2755
005	140519631	947095	BUSHING SELF ALIGNING 134-3250
005	1	947095	BUSHING SELF ALIGNING
006	40552016 1	83721H	SLEEVE, BEARING BORE 431-5968 FOR 5" SPHERICAL BEARING & 3-1/2" LUG.
006	1	83721H	SLEEVE, BEARING BORE FOR 5" SPHERICAL BEARING & 3-1/2" LUG.
007	40553686 1	56087-775	RING, RET. SELF LCK/INT 432-9984 FOR 7.750 BORE .094 X 7.952 GROOVE
007	1	56087-775	RING, RET. SELF LCK/INT FOR 7.750 BORE .094 X 7.952 GROOVE
008	140553754	56086-850	RING, RET. SELF LCK/EXT 145-0931 FOR 8.500 SHAFT .094 X 8.288 GROOVE
008	1	56086-850	RING, RET. SELF LCK/EXT FOR 8.500 SHAFT .094 X 8.288 GROOVE
009	40553745 2	82714A	RETAINER-PIN 145-3614
010	440553348	55283	RING-DIRT 432-7860
011	40554128 2	82853C	SPACER, BEARING 5" 431-6086
012	240553942	84161A	SEAL, BEARING 145-1915 FOR 24" DIA XMBR
013	240552088	51267	CLAMP-FASTENERS, ADJ 432-7866
014	175 IN	51266 40552802	CLAMP-BANDING 453-7811
015	2	15605	ADHESIVE RUBBER 3M 529-8929
016	140552192	61830G	COVER-ACCESS, R AXLE 146-7331
017	REF 1	<del>80308B</del>	BRACKET-AXLE BX HINGE
018	1	18782	CAPSCR, HX, 1/2-13NC X 9-3/4 GR 5
019	1	17412	NUT, HX, CRNLK, 1/2-13NC STD GR B
020	6	913745	WSHR, FL, HARDND, 1/2 X 1.000 OD
021	1	24560	BOLT-EYE
022	REF 2	80306A	BRACKET-EYE
023	1	20508	PIN-CLEVIS
024	1	51131	HANDLE-SPEED BALL 6IN
025	1	51133	NUT, ACORN, 1/2-13NC
026	140553921	51135	SEAL-CELLULAR RUBBER 470-6083
027	4	10029	CAPSCR, HX, 1/2-13NC X 1-1/2 GR 5
028	REF 48 40552013	23623	CAPSCR, HX, 3/4-10NC X 2-3/4 GR 8 8C6857

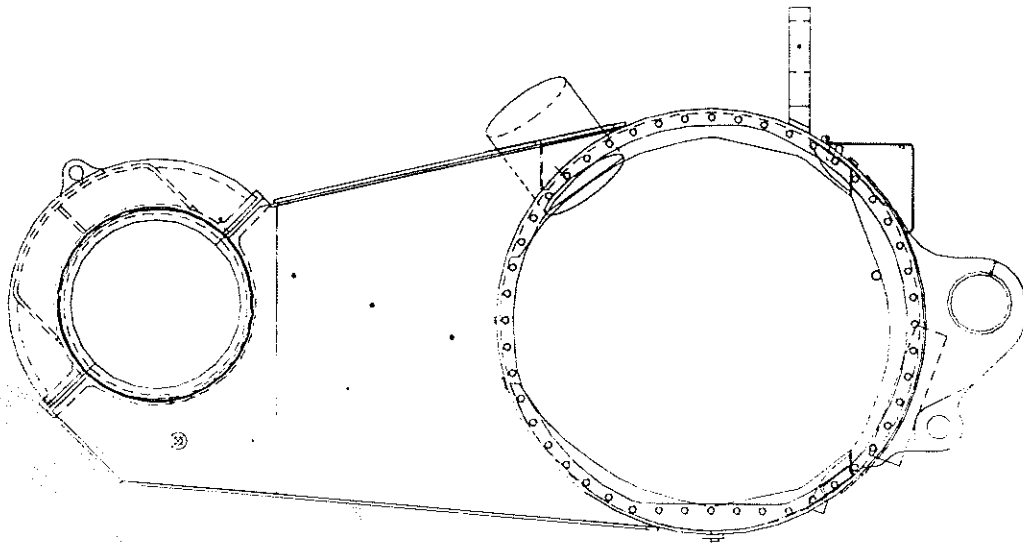
ITM	QTY PER ASSY	COMPONENT	DESCRIPTION
029	REF 48 40553491	65456A	WSHR, FL, HARDND, 3/4 X 1.500 OD 438-8625
033	440552236	17921	CLAMP HOSE HEAVY DUTY 432-9667
099	REF 1 41201907	AB4162 85764C	DWG ONLY, AXLE BOX MTG BEARING LOCK 431-5977
FOR MT4400. ACCESS DOOR OPENS TO OUTSIDE.			

AXLE BOX MTG ASSY



SHEET 1 OF 2  
ASSY.  
NO. A84162A

Assembly A84207A, AXLE BOX W/BOLT PADS  
contains proprietary information.  
If more information is necessary please contact your  
Terex Mining/Unit Rig representative.



UNIT RIG

SERVICE PARTS

AXLE BOX W/BOLT PADS

A84207A

E.N. 90970

SHEET 1 OF 1