

SECTION 11 - REFERENCE INFORMATION

DESCRIPTION	ASSEMBLY NUMBER
9 Pin Serial Cable	55948
Cable, 9 Pin Serial	55948
Charging Kit, Nitrogen	82681F
Charging Kit, Suspension	82681A
Computer Kit, Laptop	84602E
Engine Module Lifter	80857J
Hydraulic O-Ring Kit	916362
Laptop Computer Kit	84602E
Lift Assembly, Truck	85125B
Lifter, Engine Module	80857J
Lifter, Truck - Rear Pivot	70643A
Nitrogen Charging Kit	82681F
O-Ring Kit, Hydraulic	916362
Serial Cable, 9 Pin	55948
Suspension Charging Kit	82681A
Truck Lift Assembly	85125B
Truck Lifter Rear Pivot	70643A
Truck Specification	MH111

(3)

(3)

(3)

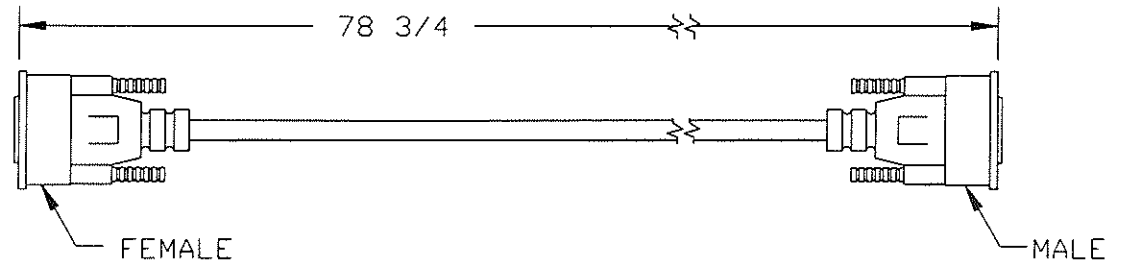
THIS DOCUMENT CONTAINS INFORMATION PROPRIETARY TO UNIT RIG, A DIVISION OF TEREX CORPORATION. IT SHALL NOT BE REPRODUCED, USED OR DISCLOSED TO ANYONE WITHOUT PRIOR WRITTEN PERMISSION OF UNIT RIG.

TOLERANCES: UNLESS OTHERWISE SPECIFIED		
DECIMAL	FRACTIONAL	ANGULAR
.XXX ± .010	± 1/8	± 1/2°
.XX ± .03		
.X ± .1		

55948

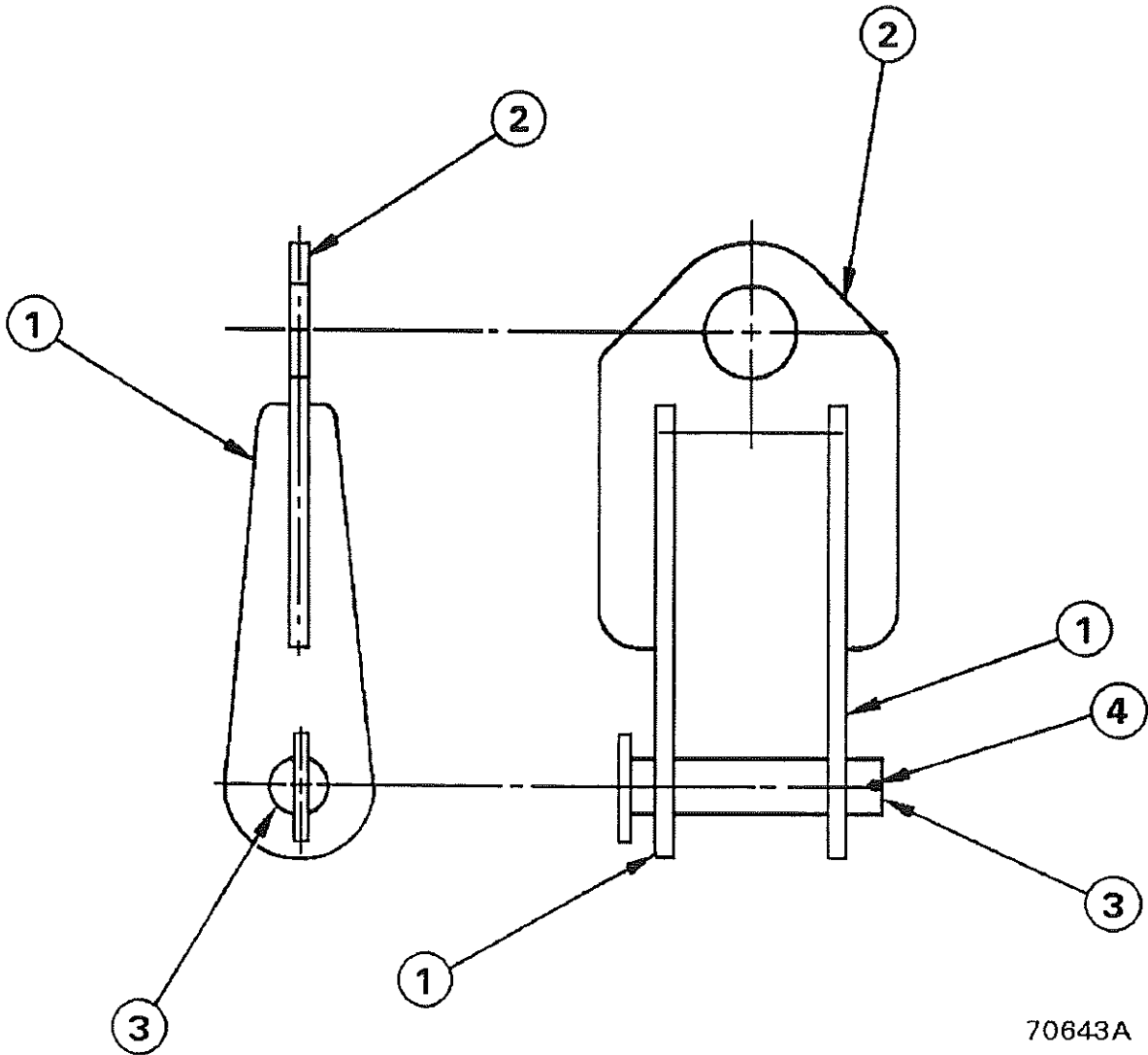
SPECIFICATIONS:

VENDOR P/N:
 9 PIN INTERFACE EXTENSION
 WITH 2x D-SUB 9 PIN MALE-FEMALE
 CONNECTORS



						CABLE, 9 PIN SERIAL	
						UNIT RIG	
						CAD SIZE 1	
						SHEET 1 OF 1	
CHG	EN. NO.	DATE	DESCRIPTION	N/A	VEHICLE	S.N.	DATE: 5-10-96
	89512	5-10-96	RELEASE		MM	051	55948
						© COPYRIGHT	
						REL CK	
						DR GILLEY	
						ENG APP	

SAFE WORKING LOAD WHEN USED AS A
MAIN FRAME LIFTING DEVICE = 80,000 LBS.



70643A

	ITEM	PART NO.
1.	PLATE	Y14693A
2.	PLATE	Y14694A
3.	PIN-LIFTER	70644A
4.	PIN-COTTER	16599



UNIT RIG

TRUCK LIFTER
REAR PIVOT

70643A

EN 88111

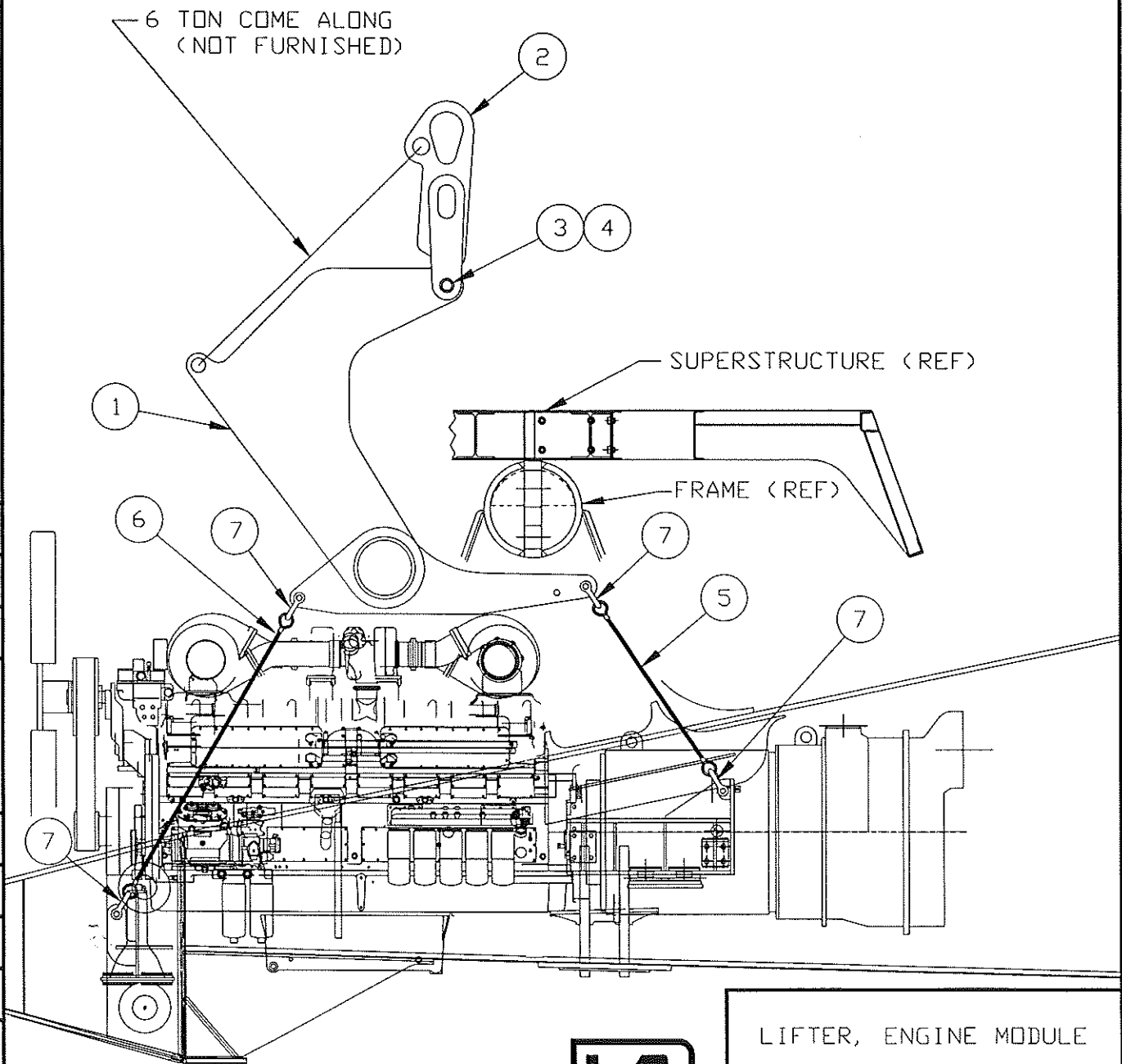
SHEET 1 OF 1

THIS DOCUMENT CONTAINS INFORMATION PROPRIETARY TO
 VISION OF TEREX CORPORATION. IT SHALL NOT BE
 REPRODUCED, USED OR DISCLOSED TO ANYONE WITHOUT PRIOR
 WRITTEN PERMISSION OF UNIT RIG.
 © COPYRIGHT DATE 3/08/99

80857J

AVERT

ITM	QTY PER ASSY	COMPONENT	DESCRIPTION
001	1	81641K	BEAM-LIFTING (FAB)
002	1	68286C	ARM LIFTING
003	1	29195	CAPSCR, HX, 2-4-1/2NC X 6 GR 5
004	1	14719	NUT-HEX, FLXLC 2-4 1/2
005	2	56084	SLING-LIFTING
006	2	56083	SLING-LIFTING
007	8	51331	SHACKLE, SCR PIN ANCH



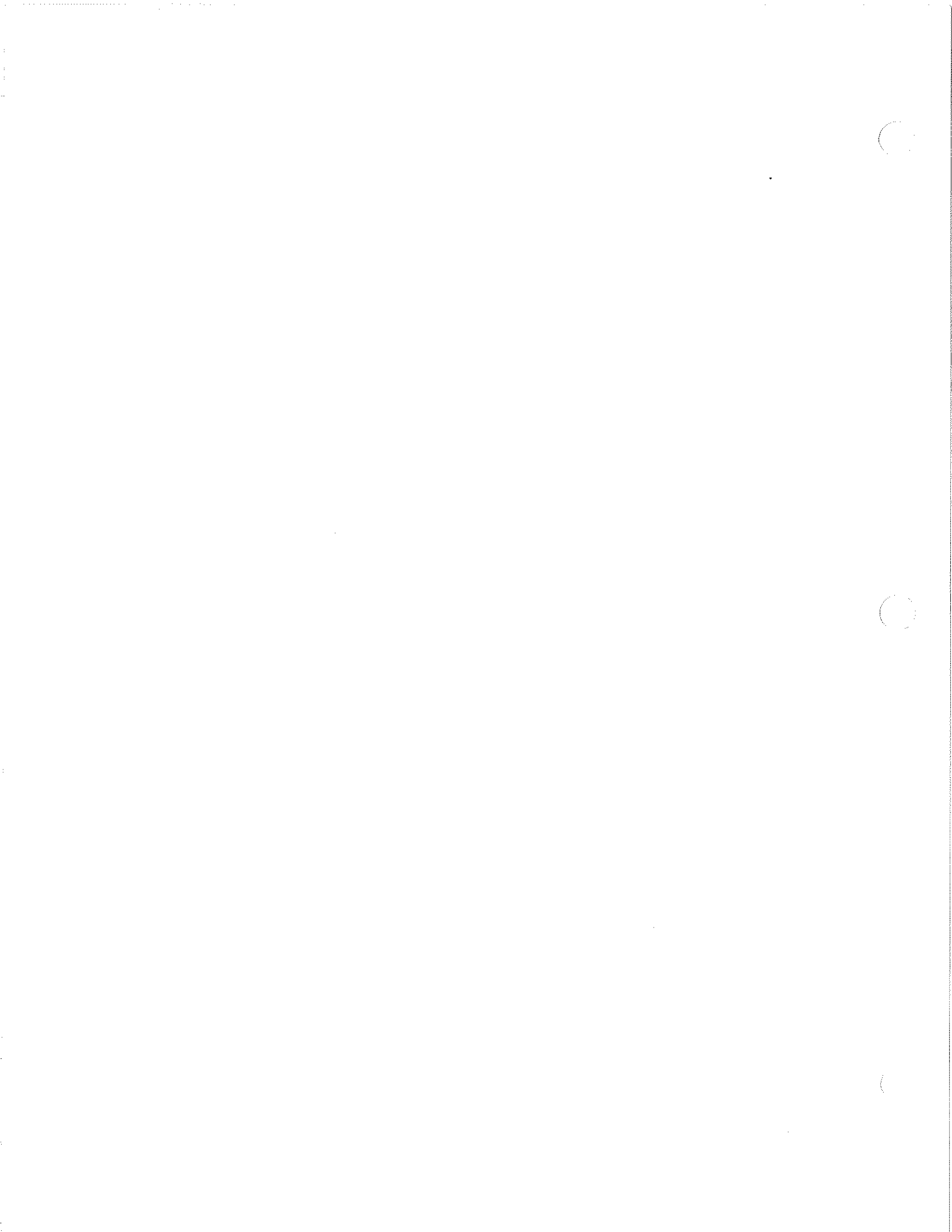
DR. DODEN
 ENG. APP. ROBINSON
 REL. CK. ELLIS

90915
 E.N. NO.

MT4400 W/DDC 16V4000 WITH GTA26E1



LIFTER, ENGINE MODULE
 SHEET 1 OF 1
 80857J



EN. NO.

81425

81594

82257

83578

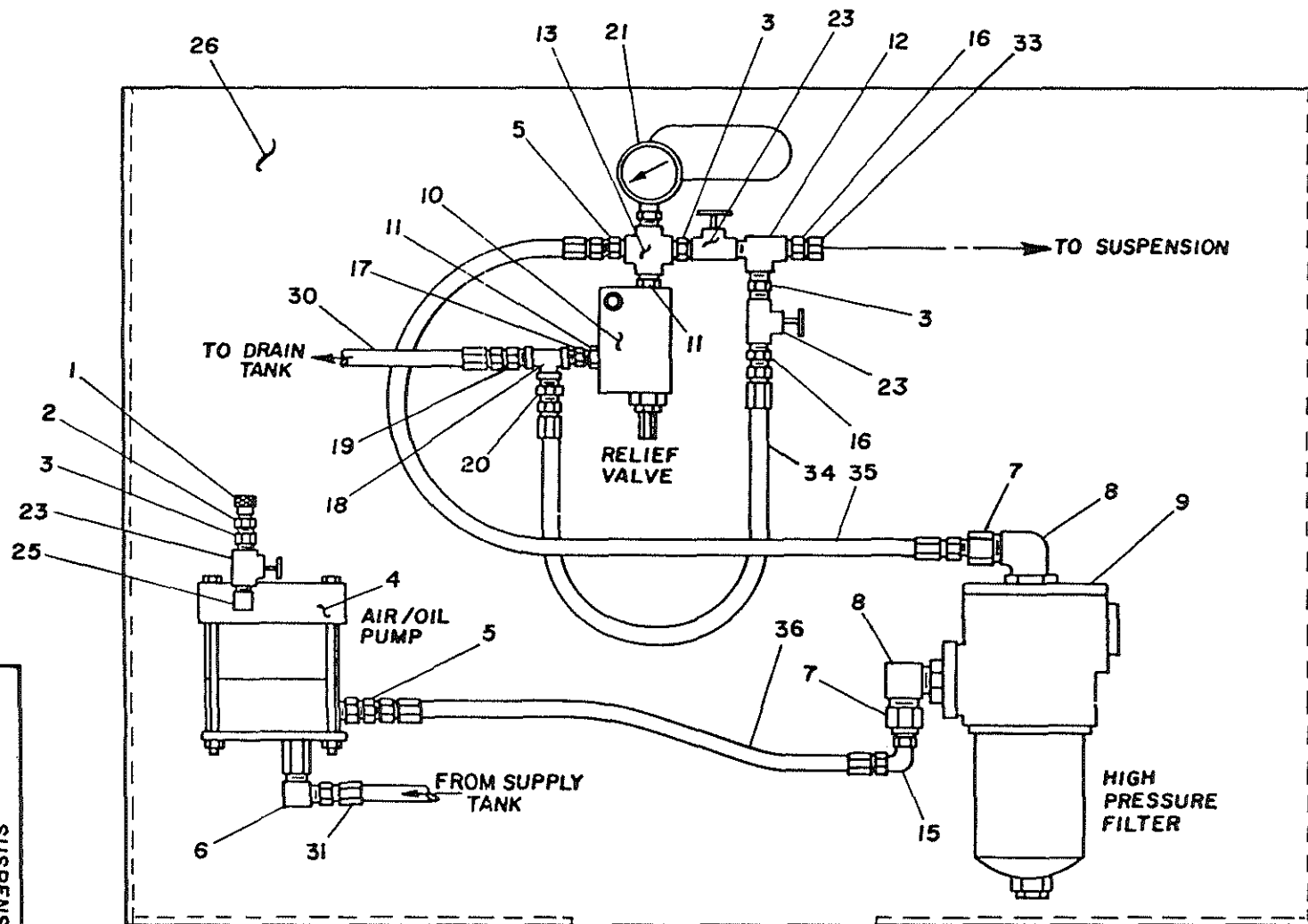
85453

89024

DR. M. CHILDERS
ENG APP
NIELSEN
RELCK
MORRIS

THIS DOCUMENT CONTAINS INFORMATION PROPRIETARY TO UNIT RIG & EQUIPMENT CO. IT SHALL NOT BE REPRODUCED, USED, OR DISCLOSED TO ANYONE WITHOUT THE PRIOR WRITTEN PERMISSION OF UNIT RIG & EQUIPMENT CO.
© COPYRIGHT DATE _____

82681A



SUSPENSION CHARGING KIT

SHEET 1 OF 3

82681A

UN 2030 (REV 10-84)

82681A

THIS DOCUMENT CONTAINS INFORMATION PROPRIETARY TO UNIT RIG, A DIVISION OF TEREX CORPORATION. IT SHALL NOT BE REPRODUCED, USED OR DISCLOSED TO ANYONE WITHOUT PRIOR WRITTEN PERMISSION OF UNIT RIG.

Copyright date

DR.
WFR
ENG. APP.
RFL. CK.
89024
85453
83578
82257
81594
81425
E.N. NO.

ITEM	QTY PER ASSY	COMPONENT	DESCRIPTION
001	1	16943	CAP-DUST. FOR 16941
002	1	16941	COUPLING- QUICK. MALE
003	3	17191	ADAPTER, NIPPLE, HEX 1/4 NPTF, MALE
004	1	51198	PUMP-HYD(AIR DRIVEN)
005	2	986212	ADAPTER, STRAIGHT #6 JIC, MALE X 1/4 NPTF, MALE
006	1	980058	ADAPTER, 90 DEG #8 JIC, MALE X 3/8 NPTF, MALE
007	2	1017210	ADAPTER, SWVL REDUCER #12 JIC, FEMALE X #6 JIC, MALE
008	2	986168	ADAPTER, 90 DEG #12 JIC, MALE X #12 O-RING, MALE
009	1	28826	FILTER HYD HIGH PRESS
010	1	1004472	VALVE, RELIEF, PILOT
011	2	28878	ADAPTER, STRAIGHT #6 O-RING, MALE X 1/4 NPTF, MALE
012	1	24148	TEE-STREET (1/4NPT)
013	1	21736	CROSS-PIPE .25NPT
015	1	18640	ADAPTER, 90 DEG #6 JIC, MALE X #6 JIC, FEMALE SWIVEL
016	2	986180	ADAPTER, STRAIGHT #4 JIC, MALE X 1/4 NPTF, MALE
017	1	24125	BUSH, 3/8X1/4NPT
018	1	10352	MI 150PSI HEX TEE, PIPE, 3/8NPT
019	1	17065	X 0.925 MI 150PSI ADAPTER, HOSE #6 JIC, MALE X 3/8 NPTF, MALE
020	1	27043	ADAPTER, STRAIGHT #4 JIC, MALE X 3/8 NPTF, MALE
021	1	52832	GAUGE-PRESS, MECH
023	3	12206	VALVE-BALL 1/4 NPT
025	1	26467	ADAPTER, NIPPLE, 90 DEG 1/4 NPTF, MALE
026	1	82699A	COMPONENT MTG PLATE
030	1	24856	HOSE ASSY 211-06 74' LG W/319-06 FTGS
031	1	21656	HOSE ASSY 211-08 72' LG W/319-08 FTGS
033	1	23554	CAP, #4 JIC
034	1	900081	HOSE ASSY 211-04

*SEE SERVICE PARTS



KTT, SUSPENSION CHR.G.

SHEET 2 OF 3

ASSY.
NO. 82681A

82681A

THIS DOCUMENT CONTAINS INFORMATION PROPRIETARY TO UNIT RIG, A DIVISION OF TEREX CORPORATION. IT SHALL NOT BE REPRODUCED, USED OR DISCLOSED TO ANYONE WITHOUT PRIOR WRITTEN PERMISSION OF UNIT RIG.

Copyright date

ITM	QTY PER ASSY	COMPONENT	DESCRIPTION
035	1	20025	13.5" LG W/319-04 FTG HOSE ASSY 211-06
036	1	20148	22" LG W/319-06 FTGS HOSE ASSY 211-06
* 039	2	53495	10" LG W/319-06 FTGS ADAPTER, STR, SHORT #4 JIC, MALE X
* 040	2	1024127	#5 O-RING, MALE HOSE ASSY 211-04 250 LG W/319 FTGS

NOTE: THIS KIT REQ'D TO FILL N2/OIL SUSPNS WITH HYDRAULIC OIL.
 * NOT SHOWN. USE IN TOP OF SUSPENSION WHEN FILLING WITH HYDRAULIC OIL.

DR.

WFR

ENG. APP.

REL. CK.

89024

85453

83578

82257

81594

81425

E.N. NO.



KIT, SUSPENSION CHR.G.

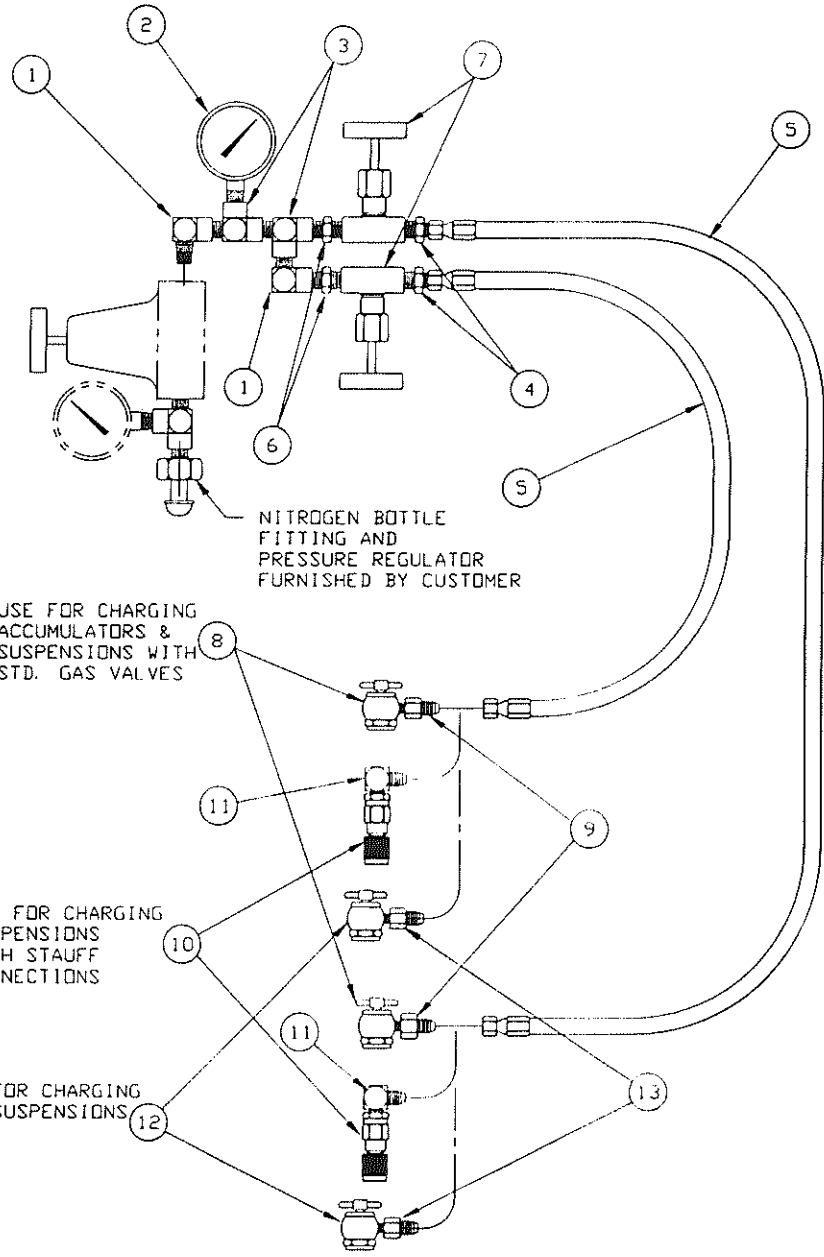
SHEET **3** OF **3**
 ASSY.
 NO. 82681A

82681F

THIS DOCUMENT CONTAINS INFORMATION PROPRIETARY TO
 UNIT RIG, A DIVISION OF TEREX CORPORATION. IT SHALL NOT BE
 REPRODUCED, USED OR DISCLOSED TO ANYONE WITHOUT PRIOR
 WRITTEN PERMISSION OF UNIT RIG.
 COPYRIGHT DATE

T. DODDEN
 ENGR. IN CH.
 GREENE
 REC. BY
 J. ELLIS

89754
 89380
 E.N. NO.



ITM	QTY PER ASSY	COMPONENT	DESCRIPTION
001	2	16370	ELBOW-ST. 90 1/4 NPT
002	1	53328	GAUGE-PRESS. MECH 0-3000 PSI
003	2	24148	TEE-STREET(1/4NPT)
004	2	986180	ADAPTER, STRAIGHT #4 JIC, MALE X 1/4 NPTF, MALE
005	2	51538	HOSE ASSY 211-04 230 LG W/319-04 FTGS
006	2	17191	ADAPTER, NIPPLE, HEX 1/4 NPTF, MALE
007	2	981487	VALVE NEEDLE
008	2	52888	ADAPTER, NITROGEN INFL
009	2	1001133	ADAPTER, STRAIGHT #4 JIC, MALE X 1/8 NPTF, FEMALE
010	2	55724	ADAPTER, QUICK CONN.
011	2	55725-0404	ADAPTER, 90 DEG #4 JIC, MALE X #4 BSPP, MALE
012	2	55964	ADAPTER, NITROGEN INFL
013	2	55996	ADAPTER-EXPANDER #3 JIC FEMALE X #4 JIC MALE



KIT, CHARGING, N2

SHEET 1 OF 1

82681F

THIS DOCUMENT CONTAINS INFORMATION PROPRIETARY TO
UNIT RIG, A DIVISION OF TEREX CORPORATION. IT SHALL NOT BE
REPRODUCED, USED OR DISCLOSED TO ANYONE WITHOUT PRIOR
WRITTEN PERMISSION OF UNIT RIG.

TOLERANCES: UNLESS OTHERWISE SPECIFIED		
DECIMAL	FRACTIONAL	ANGULAR
.XXX ± .010	± 1/8	± 1/2°
.XX ± .03		
.X ± .1		

84602E

MINIMUM REQUIREMENTS:

LAPTOP COMPUTER KIT CONSISTING OF;

LAPTOP COMPUTER---

BRAND NAME (COMPAQ, IBM, NEC, TOSHIBA)

9.5" (OR LARGER) ACTIVE MATRIX COLOR DISPLAY

② PENTIUM PROCESSOR OR BETTER

DOS (WINDOWS 95 EXCLUSIVELY NOT ACCEPTABLE)

3.5" 1.44MB DISKETTE DRIVE

300MB (OR LARGER) HARD DRIVE

③ ① 16MB RAM (OR MORE)

PARALLEL (PRINTER) PORT

SERIAL PORT

AUTOSWITCHING AC ADAPTER 100-240 VOLT 50/60HZ

CIGAR LIGHTER ADAPTER--

ADAPTER FOR OPERATING ABOVE LAPTOP

FROM 12 VOLT DC CIGAR LIGHTER.

COMPUTER CARRYING CASE---

CASE COMPATIBLE WITH ABOVE EQUIPMENT

NOTE:

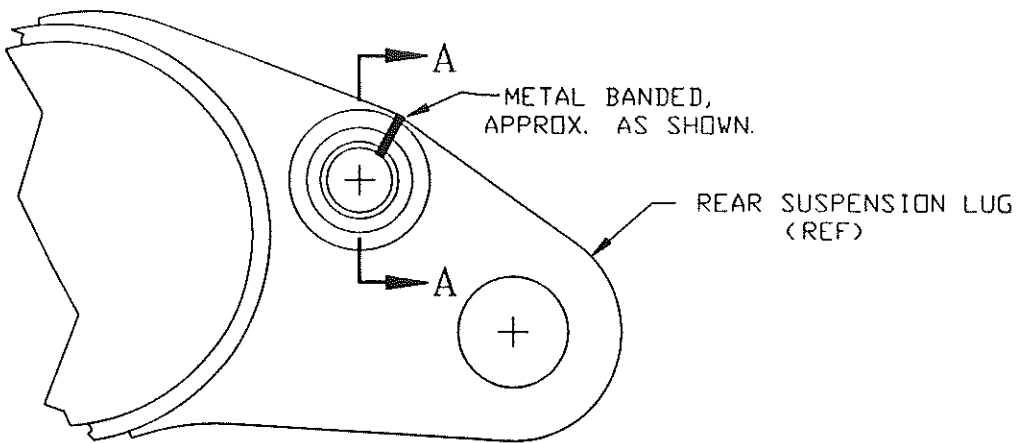
THIS LAPTOP IS INTENDED FOR USE BY
SERVICEMAN WORKING ON OFF-HIGHWAY
MINING TRUCKS.

CHG	EN. NO.	DATE	DESCRIPTION	N/A	VEHICLE	S.N.	COMPUTER KIT, LAPTOP		UNIT RIG	CAD SIZE 1
③	90880	02-02-99	16MB RAM WAS 8MB RAM				DR	SLF		
②	90398	10/22/97	PENTIUM WAS 486				ENG APP	GAP		
①	89838	9/30/96	8MB WAS 4MB RAM				REL CK	ELLIS		
■	89730	8/7/96	RELEASE	TRUCK SPEC	MT3300	56-61				

85125B

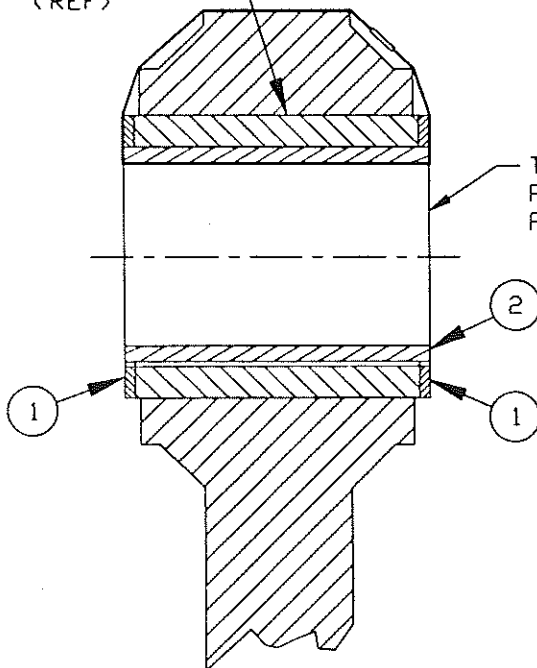
THIS DOCUMENT CONTAINS INFORMATION PROPRIETARY TO
 UNIT RIG, A DIVISION OF TEREX CORPORATION. IT SHALL NOT BE
 REPRODUCED, USED OR DISCLOSED TO ANYONE WITHOUT PRIOR
 WRITTEN PERMISSION OF UNIT RIG.
 © COPYRIGHT DATE

BORTHICK
 ENG. APP.
 FUJIAN
 REL. CK.
 ELLIS



ITM	QTY PER ASSY	COMPONENT	DESCRIPTION
001	4	85126B	WASHER-LIFT
002	2	85127B	TUBE-LIFT

PIVOT BUSHING (REF)



SEC A-A
 TYP FOR BOTH
 SUSPENSION LUGS



TRUCK LIFT ASSEMBLY

SHEET 1 OF 1
 85125B

91007
 E.N. NO.



O'RING KIT - HYDRAULIC P/N 916362



916362

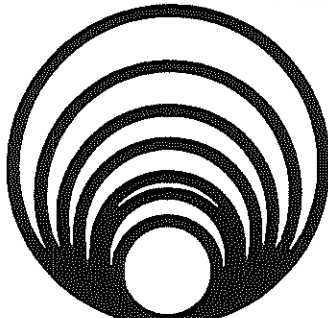
UNIT RIG O'RING P/N'S AND QUANTITIES

ITEM	QTY PER ASSY	COMPONENT	DESCRIPTION
001	25	916356	O'RING-90 DURO
002	25	916357	O'RING-90 DURO
003	25	916368	O'RING-90 DURO
004	25	916363	O'RING-90 DURO
005	25	916359	O'RING-90 DURO
006	15	916360	O'RING-90 DURO
007	15	916364	O'RING-90 DURO
008	25	21688	SEAL O RING
009	25	986269	O-RING
010	25	986270	O-RING
011	25	1019450	O-RING
012	25	986272	O-RING
013	25	21224	SEAL O'RING
014	15	916361	O'RING-90 DURO
015	15	1019455	O RING
016	15	916358	O'RING-90 DURO
017	15	916365	O'RING-90 DURO
018	15	916366	O'RING-90 DURO
019	15	1023679	O-RING, (DMG 1101783)
020	15	1023682	O-RING, (DMG 1101783)
021	10	1023685	O-RING, (DMG 1101783)
022	10	18848	SEAL-O-RING
023	10	17074	SEAL DRING
024	1	916367	O'RING EXTRACTION KIT
025	1	916368	O-LUBE
026	1	916369	PLASTIC DIVIDER BOX

O'RING EXTRACTION TOOLS O'RING LUBRICATION					
ORS -4 P/N: 916356 QTY: 25	P/N: 916367 P/N: 916368				ORS -6 P/N: 916357 QTY: 25
ORS -8 P/N: 916886 QTY: 25	ORS -10 P/N: 916383 QTY: 25	ORS -12 P/N: 916359 QTY: 25	ORS -16 P/N: 916360 QTY: 15	ORS -20 P/N: 916364 QTY: 15	SAE ORB-4 P/N: 21688 QTY: 25
SAE ORB-6 P/N: 986209 QTY: 25	SAE ORB-8 P/N: 986270 QTY: 25	SAE ORB-10 P/N: 1019450 QTY: 25	SAE ORB-12 P/N: 986272 QTY: 25	SAE ORB-16 P/N: 21224 QTY: 25	SAE ORB-20 P/N: 916361 QTY: 15
SAE ORB-32 P/N: 916358 QTY: 15	SAE ORB-24 P/N: 1019465 QTY: 15	FLANGE -12 P/N: 916366 QTY: 15	FLANGE -16 P/N: 916366 QTY: 15	FLANGE -20 P/N: 1023679 QTY: 15	FLANGE -24 P/N: 1023682 QTY: 15
FLANGE -32 P/N: 1023686 QTY: 10	FLANGE -48 P/N: 17074 QTY: 10			FLANGE -40 P/N: 18848 QTY: 10	

SIZING CHART

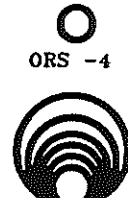
TORQUE ALL FITTINGS AND SPLIT FLANGE CONNECTIONS TO TORQUE SPECIFICATION HYDRAULIC FITTINGS 02-579



FLANGE -12 THRU -48



SAE ORB -4 THRU -32



ORS -6 THRU -20

INSIDE LID LABEL STICKER



O'RING KIT - HYDRAULIC P/N 916362

OUTSIDE LID LABEL STICKER

THIS DOCUMENT CONTAINS INFORMATION PROPRIETARY TO UNIT RIG, A DIVISION OF TEREX CORPORATION. IT SHALL NOT BE REPRODUCED, USED OR DISCLOSED TO ANYONE WITHOUT PRIOR WRITTEN PERMISSION OF UNIT RIG.

				REWORK TO:			O'RING KIT - HYDRAULIC	
				PREFERRED UNITS: INCHES/POUNDS			UNIT RIG	
				DATE	BY	APP	CAT	
89952	11/20/96	RELABELED TRAYS TO BE AS SUPPLIED		DATE	BY	APP	REV	
	8/22/96	RELEASE	80116K	MM	051	S. EARL		
CHK	DL NO.	DATE	DESCRIPTION	R/A	WORK	S.A.		
				REWORK ALL BARS AND ENDS			ELLIS	
				COMPANY			8/26/96	
				916362				



THIS DOCUMENT CONTAINS INFORMATION PROPRIETARY TO
 UNIT RIG, A DIVISION OF TEREX CORPORATION. IT SHALL NOT BE
 REPRODUCED, USED OR DISCLOSED TO ANYONE WITHOUT PRIOR
 WRITTEN PERMISSION OF UNIT RIG.

MH111

AVERT

© COPYRIGHT DATE

ITM	QTY PER ASSY	COMPONENT	DESCRIPTION
10	1.00	MH111-ELEC	EA ELECTRICAL SEGMENT
20	1.00	MH111-HYDR	EA HYDRAULIC SEGMENT
30	1.00	MH111-MECH	EA MECHANICAL SEGMENT
40	1.00	MH111-STRU	EA STRUCTURAL SEGMENT
50	1.00	MH111-100	EA ACCESSORY MODULE
60	1.00	MH111-190	EA TOOL & FIXTURE MODULE

CUST: U. S. BORAX
 S/N: MH111. . MH135 (25)
 ATM#: 9904-04
 MODEL: MT4400
 ENG: DDC 16V4000
 2500 HP
 ALT: GE 5GTA26H1
 M. M. : GE 5GE787FS11
 31. 875: 1 GR
 CTRL: STATEX III, FE
 RET: BLOWN 18E GRID
 3 STEP ERR
 FT BRKS: CARL 4 CAL
 46" DISC
 RR BRKS: CARL DUAL
 25" DISCS
 BODY: 188 YD3 STRUCK
 24'-10" WIDE
 RIMS: RIMEX 29X57 (6)
 TIRES: CUSTOMER SUPPL
 FUEL: 1300 US GAL
 HYDR: 175 US GAL
 EXHST: R. SIDE W/MUFF
 AIR CL: DONALD. SRG29
 ENG FAN: 68" DIA
 RAD: L & M 72 FT2
 SUSP: N2/OIL SMR
 MAX GVW: 850,000 LBS
 ROCK EJECTOR LOCATION
 96-1/4" FROM BODY CTR

DR.
Robinson
 ENG. APP.
 FUJAN
 REL. CK.
 ELLIS

91054
 E.N. NO.



TRUCK SPEC. /MT4400
 SHEET 1 OF 1
 ASSY.
 NO. MH111

THIS DOCUMENT CONTAINS INFORMATION PROPRIETARY TO
 UNIT RIG, A DIVISION OF TEREX CORPORATION. IT SHALL NOT BE
 REPRODUCED, USED OR DISCLOSED TO ANYONE WITHOUT PRIOR
 WRITTEN PERMISSION OF UNIT RIG.

DR.
 Robinson
 ENG. APP.
 NIELSEN
 REL. CK.
 ELLIS

MH111-020

AVERT

© COPYRIGHT DATE

ITM	QTY PER ASSY	COMPONENT		DESCRIPTION
10	1.00	81284F	EA	BRACKET, HOOD SHIPPING
20	1.00	A84204N	EA	FUEL TANK ASSEMBLY 1300 GALLON FUEL TANK FOR MT4400 W/BUCKEYE PRESSURE FUELING ON BOTH SIDES OF TRUCK.
30	1.00	A84261A	EA	HOOD ASSEMBLY MT4400 W/2467HP MTU OR CUMMINS K2000 OR DDC 16V149.
35	3.00	916254	EA	KIT, ELEMENT & SEAL 6 MICRON FILTRATION
50	1.00	A84213G	EA	LADDER & RAILING ASSY MT4400 STD FRAME. SINGLE L. H. LAPEYRE. HANDRAILS W/TOEBRDS 3/8" ABOVE DECK. WRAP AROUND HOOD RAIL. R. H. FENDER FOR MUFFLERS.
60	2.00	A84242A	EA	LADDER, ENGINE SERVICE FOR MT4400. QTY FOR 1 SIDE ONLY.
70	1.00	A84414A	EA	MIRROR MTG ASSY L. H. FOR MT30/33/36/37/44, 10 X 30 FLAT MIRROR ON BOLT ON BRACKET.
80	1.00	A84415A	EA	MIRROR MTG, R. H. 16 X 24 CONVEX MIRROR FOR MT4400 BOLTS TO HANDRAIL PLUS 2 DIAGONAL BRACES TO DECK.
90	1.00	A84257B	EA	MUD GUARD ASSY MT-4400 - FRONT & RR OF FRONT AXLE AND FRT OF REAR AXLE. RIGHT SIDE MUFFLER EXHAUST
100	1.00	A84737B	EA	MUD GUARD-MIRROR ASSY FOR MT-4400 W/ RIGHT SIDE MUFFLER FENDER
110	1.00	27528	GL	PAINT, BLACK SAFETY
120	5.00	56300E	GL	PAINT, LH YELLOW LOW HAPS. 147-130
130	30.00	56300E	GL	PAINT, LH YELLOW LOW HAPS. 147-130
140	30.00	56300C	GL	PAINT, PRIMER, LH GRAY LOW HAPS. 492-55
150	1.00	A83678K	EA	SAFETY SIGN ASSY-ENGL MT4400-ENGLISH

91054
 E.N. NO.



FINAL ASSY MODULE
 SHEET 1 OF 2
 ASSY.
 NO. MH111-020

THIS DOCUMENT CONTAINS INFORMATION PROPRIETARY TO
UNIT RIG, A DIVISION OF TEREX CORPORATION. IT SHALL NOT BE
REPRODUCED, USED OR DISCLOSED TO ANYONE WITHOUT PRIOR
WRITTEN PERMISSION OF UNIT RIG.

© COPYRIGHT DATE

MH111-020

AVERT

ITM	QTY PER ASSY	COMPONENT		DESCRIPTION
160	1.00	A84945G	EA	TRUCK DECAL ASSEMBLY
170	1.00	85125B	EA	MT4400 W/TEREX DECALS TRUCK LIFT ASSEMBLY

DR.

ENG. APP.

REL. CK.

91054
E.N. NO.



FINAL ASSY MODULE

SHEET 2 OF 2
ASSY.
NO. MH111-020

MH111-030

ADVERT

THIS DOCUMENT CONTAINS INFORMATION PROPRIETARY TO
 UNIT RIG, A DIVISION OF TEREX CORPORATION. IT SHALL NOT BE
 REPRODUCED, USED OR DISCLOSED TO ANYONE WITHOUT PRIOR
 WRITTEN PERMISSION OF UNIT RIG.
 © COPYRIGHT DATE -----

ITM	QTY PER ASSY	COMPONENT		DESCRIPTION
10	1.00	A85164A	EA	24V ELECTRICAL ASSY MT4400
20	6.00	55586	EA	BATTERY
30	1.00	A84245A	EA	BATTERY BOX MOUNTING
40	1.00	A85165A	EA	GROUND CABLE ASSEMBLY
50	1.00	85103C	EA	HARNESS INSTALL, CAB
60	1.00	A84216A	EA	LIGHT ASSY-HD, TL, CLR MT4400
70	1.00	80943J	EA	REV WARN ELEC HORN AS
80	1.00	A85142B	EA	CAB ELECTRICAL ASSY FOR ROPS CAB W/ MANUAL POWER SUPPLY

DR.

Robinson

ENG. APP.

NIELSEN

REL. CK.

ELLIS

91054

E.N. NO.



ELECT. MODULE

SHEET 1 OF 1

ASSY.

NO. MH111-030

MH111-040

AVERT

THIS DOCUMENT CONTAINS INFORMATION PROPRIETARY TO
 DIVISION OF TEREX CORPORATION. IT SHALL NOT BE
 REPRODUCED, COPIED, USED OR DISCLOSED TO ANYONE WITHOUT PRIOR
 WRITTEN PERMISSION OF UNIT RIG.
 © COPYRIGHT DATE

DR.
Robinson
 ENG. APP.
 NIELSEN
 REL. CK.
 ELLIS

ITM	QTY PER ASSY	COMPONENT	DESCRIPTION
10	1.00 *	84942B *	EA ENGINE, DIESEL 16V4000 2500 HP, ELECTRIC START W/220 AMP NIEHOFF ALT.
20	1.00 *	56123 *	EA ALTERNATOR, DRIVE SYST GE 5GTA26H1
30	1.00	A84776C	EA FOR 4000 SERIES ENG ENGINE & ALT MTG ASSY MT4400 W/16V4000
40	1.00	A84010H	EA 68" FAN RADIATOR MTG ASSY MT4400 W/16V4000 ENG
50	1.00	A84857A	EA RADIATOR PIPING ASSY MT4400 W/16V4000
60	1.00	A84927A	EA AIR CLEANER ASSY MT4400 W/16V4000
70	1.00	A84925A	EA EXHAUST ASSY, MUFFLERS MT4400 W/DDC16V4000
80	1.00	A84963A	EA ENGINE PIPING ASSY MT4400 W/16V4000 ENG.
100	1.00	A85158A	EA ENGINE ELECTRICAL MT4400 W/DDC 16V4000
110	1.00	A83850C	EA INDICATOR, RESTRICTION FOR 'DDC' ENGINE -- (4) 2" POP-UP GAUGES RED COLOR CODED AT 20" OF WATER -- INCLUDES PLUMBING. NOTE: DO NOT WIRE UP WARNING FUNCTION.
120	1.00	A84788N	EA AIR CONDITIONER ASSY MT4400 W/DDC16V4000 ENG SANDEN COMPRESSOR CONDENSOR MOUNTED IN FRONT OF RADIATOR
150	65.00	ANTIFREEZE	GL ETHYLENE GLYCOL UNIT IS GALS. WEIGHT INCLD. WATER.

*SEE SERVICE PARTS



POWER MODULE, 16V4000

SHEET 1 OF 1

ASSY.
 NO. MH111-040

91054
 E.N. NO.

MH111-050

ALBERT

THIS DOCUMENT CONTAINS INFORMATION PROPRIETARY TO UNIT RIG, A DIVISION OF TEREX CORPORATION. IT SHALL NOT BE REPRODUCED, USED OR DISCLOSED TO ANYONE WITHOUT PRIOR WRITTEN PERMISSION OF UNIT RIG.
 © COPYRIGHT DATE

DR.
Robinson
 ENG. APP.
 NIELSEN
 REL. CK.
 ELLIS

ITM	QTY PER ASSY	COMPONENT		DESCRIPTION
10	1.00	A85117B	EA	SHIPPING KIT, HYDRA. MT3000/3300/3600B/3700B UNITS WITH ORS FTGS IN HYDRAULIC SYSTEM
20	1.00	A84148A	EA	DUMP CYL MTG ASSY FOR MT4400 12" DIA 2 STAGE
30	1.00	A85185A	EA	HYD. TANK ASSY. MT4400, SELF PRESSURIZING, VERTICAL 30" DIA. 175 GAL CAP, INCLUDES FILTER IN FILL LINE
40	1.00	A85188A	EA	AUTO LUBE ASSY. MT4400 W/HYDR. DRIVEN LUBE PUMP (ROTARY PUMP). REMOTE FILL INSTALLED ON LEFT FRONT W/OVERFLOW
50	1.00	A85186A	EA	HYD. PUMP DRIVE ASSY MT4400 W/DOUBLE HOIST PUMP & STD PISTON STRG PUMP. SHORT DRIVESHAFT FOR USE WITH DDC 16V4000 ENGINE.
60	1.00	A85183A	EA	HYD. DUMP ASSY. SINGLE INLET DUMP VALVE, CABLE CONTROL PILOT VALVE, NO STRG PUMP ASSIST IN DUMP SYSTEM.
70	1.00	A85180A	EA	HYD. STEERING ASSY. MT4400 W/PISTON PUMP, STEERING FLOW AMP, TWO 15 GAL. ACCUM'S, 6" CYL. AND ORS & FLANGE FITTINGS.
80	1.00	A85184A	EA	HYD. BRAKE ASSY. MT4400 W/PISTON PUMP, W/O AUTO APPLY AND BRAKE DRAG. 1 GALLON TUBUL ACCUMULATORS, LOAD BRAKE, PARK BRAKE PRESSURE REDUCING, PARK BRAKE DETENTED VALVE AND ORS FITTINGS. ROCKWELL BRAKES
90	1.00	A85187A	EA	SUPPLEMENTAL DC PUMP ASSY MT4400 MANUAL POWER

SUPPLY, SUPPLIES FLUID TO STEERING & BRAKE SYSTEMS WHEN MAIN PUMP ISN'T AVAILABLE.



HYDRAULICS MODULE

SHEET 1 OF 1

ASSY.
 NO. MH111-050

91054
 E.N. NO.

MH111-060

ALVERT

THIS DOCUMENT CONTAINS INFORMATION PROPRIETARY TO
 UNIT RIG, A DIVISION OF TEREX CORPORATION. IT SHALL NOT BE
 REPRODUCED, USED OR DISCLOSED TO ANYONE WITHOUT PRIOR
 WRITTEN PERMISSION OF UNIT RIG.
 © COPYRIGHT DATE

DR.
Robinson
 ENG. APP.
 NIELSEN
 REL. CK.
 ELLIS

ITM	QTY PER ASSY	COMPONENT		DESCRIPTION
10	1.00	A84212B	EA	ALT & WHEEL COOLING MT4400 STATEX III DDC 16V149---OR----- DDC 16V4000---OR----- CUMMINS K2000
20	1.00	A85105A	EA	CONTROL BOX ASSEMBLY WITH AIRLESS P1 & REVERSER
40	1.00	82280P	EA	DUMP BODY UP ASSY MT4400-SWITCH ON AIR DUCT FOR CUMMINS AND DETROIT ENGINES
50	1.00	83566S	EA	KIT, STATEX 3 CONTROL W/AIRLESS P1 & REV W/2000A/200MV SHUNTS 41A253301G11
60	1.00	83601A	EA	KIT, EXTENDED RETARD G. E. 41A253273G6 3 STEP EXTENDED RETARD FOR STATEX III
70	1.00	A85167A	EA	POWER & EXCITATN ASSY MT4400 - 3 STEP, 18 GRID 787 WHEEL - CABLE KITS & WIRE HARNESSSES.
80	1.00	A85022A	EA	RETARDING GRID ASSY 18 'H' GRIDS - 4 PT BLOWER MOUNT -- SEALED BOX
90	1.00	A83829M	EA	WHEEL MOTOR ASSY 787 WHEEL WITH HUB FOR 57" DIA RIMS. SPACER BAND, STUDS, CLAMPS, & HARDWARE. PLUMBING INCL ALL HOSES & FITTINGS FOR BREATHERS & SUMPS. WHEELCLAMPS INCLUDE JACKOUT HOLES.
100	2.00 *	82225M *	EA	WHEEL, MOTORIZED 787 GE P/N 5GE787FS11 31.875: 1 40X57 SEE GE PUB GEK-91647 FOR WHEEL MOTOR SPECS

*SEE SERVICE PARTS



DRIVE MODULE, 787

SHEET 1 OF 1

ASSY.

NO. MH111-060

91054

E.N. NO.

MH111-070

AVERT

THIS DOCUMENT CONTAINS INFORMATION PROPRIETARY TO
 UNIT RIG, A DIVISION OF TEREX CORPORATION. IT SHALL NOT BE
 REPRODUCED, USED OR DISCLOSED TO ANYONE WITHOUT PRIOR
 WRITTEN PERMISSION OF UNIT RIG.
 © COPYRIGHT DATE

ITM	QTY PER ASSY	COMPONENT		DESCRIPTION
10	1.00	A83640C	EA	AXLE ASSY, FRONT MT4400 BRONZE THRUST RING W/ANTI-ROTATION FOR FACE TYPE WHEEL SEAL. CAN BE USED WITH OIL BATH OR GREASE PACK WHEEL BEARING LUBE.
20	1.00	A84162A	EA	AXLE BOX MTG ASSY FOR MT4400. ACCESS DOOR OPENS TO OUTSIDE.
30	2.00	A83800H	EA	FRONT SUSPENSION ASSY MT-4400 "SMR" SUSPEN.
40	2.00	82559E	EA	FRONT WHEEL ASSEMBLY MT4400 WITH CORED SPINDLE.
50	2.00	69184M	EA	HUB CAP ASSY (STD)
60	2.00	A83801F	EA	REAR SUSPENSION ASSY MT-4400 "SMR" SUSPEN.
70	1.00	A83700A	EA	STEERING ASSY, MECH FOR MT4400 (STEERING CYLINDER W/TWO ROD SCRAPERS)

DR.

Robinson

ENG. APP.

NIELSEN

REL. CK.

ELLIS

91054

E.N. NO.



CAD™

RUNNING GEAR MODULE

SHEET 1 OF 1

ASSY.

NO. MH111-070

THIS DOCUMENT CONTAINS INFORMATION PROPRIETARY TO
 DIVISION OF TEREX CORPORATION. IT SHALL NOT BE
 REPRODUCED, USED OR DISCLOSED TO ANYONE WITHOUT PRIOR
 WRITTEN PERMISSION OF UNIT RIG.
 © COPYRIGHT DATE -----

MH111-080

ALBERT

ITM	QTY PER ASSY	COMPONENT	DESCRIPTION
10	2.00	A84066B	EA REAR BRAKE ASSEMBLY CARLISLE DUAL DISC BRAKES FOR .787/788 WHEEL MOTORS. REVISED PARK BRAKE MOUNTING.
20	2.00	A84196B	EA FRONT BRAKE ASSEMBLY QUAD CARLISLE J-6 CALIPERS W/46" DISC. FOR MT4400; USES ORS HOSES, W/SLANT SEALS

DR.
Robinson
 ENG. APP.
 NIELSEN
 REL. CK.
 ELLIS

91054
 E.N. NO.



BRAKE MODULE

SHEET 1 OF 1

ASSY.
 NO. MH111-080

MH111-090

ALVERT

THIS DOCUMENT CONTAINS INFORMATION PROPRIETARY TO
 UNIT RIG, A DIVISION OF TEREX CORPORATION. IT SHALL NOT BE
 REPRODUCED, USED OR DISCLOSED TO ANYONE WITHOUT PRIOR
 WRITTEN PERMISSION OF UNIT RIG.
 © COPYRIGHT DATE

ITM	QTY PER ASSY	COMPONENT		DESCRIPTION
10	1.00	83400J	EA	CAB, ROPS W/ABS PNLS
20	1.00	85039J	EA	CAB CONFIG. ASSEMBLY
30	1.00	77904S	EA	CAB GAUGE ASSY, C/CODE COLOR CODED. INCLUDES ENGINE OIL PRESS ENGINE COOL TEMP FUEL LEVEL VOLTMETER INSTALL PER CAB CONFIGURATION
40	1.00	A84183A	EA	CAB & S/S MOUNTING MT4400 W/ R. O. P. S. - ALL PARTS TO MOUNT CAB TO S/S PLATFORM AND S/S TO FRAME.
50	1.00	A84217B	EA	CAB SHIFTER ASSY FOR ROPS CAB RETARD SPEED CONTROL SWITCHES MOUNTED IN CENTER CONSOLE. FOR REVISED HAND BRAKE CONTROL.
70	1.00	A84230G	EA	DASH & SHROUD ASSY OPENING FOR HOURMETER AND MPS IN R. H. PANEL.
80	1.00	81161K	EA	ELECTRONIC THROTTLE
90	1.00	A83419C	EA	HEATER ASSY, ROPS CAB W/REVISED FAN SPEEDS
110	1.00	80169G	EA	RETARD PEDAL ASSY FOR UNIV. CAB. USES WILLIAMS ELECTRONIC PEDAL.
120	1.00	A84399A	EA	ROPS CERT. LABEL ASSY FOR MT4400 ROPS CAB
130	1.00	* 83955U *	EA	SEAT ASSY (83955A-Z) MECHANICAL RIDE -- GRAY TWEED CLOTH/ HD BLACK VINYL -- 3 7/8" RISER -- DBL FORE/AFT SLIDE LOCK/HEADREST/ARMREST ISRI MOD 6000/575
140	1.00	83955W	EA	SEAT ASSY (83955A-Z) FIXED RIDE/GRAY TWEED CLOTH & HD BLK VINYL HEAD REST. HEIGHT, FORE&AFT ADJUST ISRI MODEL 1000/575

DR.
Robinson
 ENG. APP.
 NIELSEN
 REL. CK.
 ELLIS

*SEE SERVICE PARTS



CAB MODULE, ROPS
 SHEET 1 OF 2
 ASSY.
 NO. MH111-090

91054
 E.N. NO.

THIS DOCUMENT CONTAINS INFORMATION PROPRIETARY TO
 UNIT RIG, A DIVISION OF TEREX CORPORATION. IT SHALL NOT BE
 REPRODUCED, COPIED OR DISCLOSED TO ANYONE WITHOUT PRIOR
 WRITTEN PERMISSION OF UNIT RIG.
 © COPYRIGHT DATE

MH111-090

WIPER

ITM	QTY PER ASSY	COMPONENT		DESCRIPTION
150	1.00	A84375A	EA	SEAT BELT ASSY FOR ROPS CAB. INCLUDES BELTS WITH SHOULDER STRAPS FOR OPERATOR'S & PASSENGER SEATS
160	1.00	81116K	EA	SPEEDOMTR & TACH ASSY ANALOG GAUGES - 0-50 MPH W/ODOMETER 0-3500 RPM
170	1.00	A83459A	EA	STEER CLMN/WHL ASSY DOUGLAS COLUMN W/18" STEERING WHEEL
180	1.00	A85115A	EA	WINDSHIELD WASHER ASY FOR ROPS CAB INCLUDES: 2 NOZZLES MTD BELOW WINDSHIELD 6 QUART BOTTLE MTD IN HYD. COMP. BOX. ACTUATED BY WIPER SWITCH
200	1.00	A83432A	EA	WINDSHIELD WIPER ASSY 24 VOLT ELECTRIC ASSY FOR UNIVERSAL ROPS CAB. TWO SPEED MOTOR WITH INTERMITTENT SWITCH.

DR.

ENG. APP.

REL. CK.

91054

E.N. NO.



CAD™

CAB MODULE, ROPS

SHEET 2 OF 2

ASSY.

NO. MH111-090

THIS DOCUMENT CONTAINS INFORMATION PROPRIETARY TO
 UNIT RIG, A DIVISION OF TEREX CORPORATION. IT SHALL NOT BE
 REPRODUCED, USED OR DISCLOSED TO ANYONE WITHOUT PRIOR
 WRITTEN PERMISSION OF UNIT RIG.
 © COPYRIGHT DATE -----

MH111-100

AVERT

ITM	QTY PER ASSY	COMPONENT		DESCRIPTION
20	1.00	A84279G	EA	CENTRAL SERVICE ASSY MT4400 W/16V4000 ENGINE ENGINE OIL HYDRAULIC OIL ENGINE COOLANT LOCATED L. H. FRONT
70	1.00	83990X	EA	WEIGH SYSTEM ASSEMBLY MT4400 W/ LOAD LIGHTS
170	1.00	84503B	EA	CAB CLEANING ASSY
180	1.00	76032T	EA	RADIO INSTALLATION

DR.
Robinson
 ENG. APP.
 NIELSEN
 REL. CK.
 ELLIS

91054
 E.N. NO.



ACCESSORY MODULE

SHEET 1 OF 1
 ASSY.
 NO. MH111-100

MH111-130

ALBERT

THIS DOCUMENT CONTAINS INFORMATION PROPRIETARY TO
 UNIT RIG, A DIVISION OF TEREX CORPORATION. IT SHALL NOT BE
 REPRODUCED, USED OR DISCLOSED TO ANYONE WITHOUT PRIOR
 WRITTEN PERMISSION OF UNIT RIG.
 © COPYRIGHT DATE

ITM		QTY PER ASSY	COMPONENT		DESCRIPTION
10	R	1.00	S10324	EA	24V ELECTRIC
20	R	1.00	S10324E	EA	SCHEMATIC, OPTIONS
25	R	1.00	S10639	EA	WEIGH SYSTEM SCHEMTC
30	R	1.00	S10492	EA	POWER & EXE SCHEMATIC MT30/33/36/37/4400
40	R	1.00	S1118	EA	SCHEMATIC, HYDRAULIC
50	R	1.00	T4673	EA	CONNECTOR INSTL
60	R	1.00	T4740	EA	PARK BRAKE ADJUSTMENT FOR CARLISLE BRAKE
70	R	1.00	T4831	EA	SHIM PROCED, ENG/ALT
80	R	1.00	T4832	EA	LOCKTITE PROCEDURE
90	R	1.00	T5017	EA	NON-SLIP PAINT INSTR
100	R	1.00	T5031	EA	BRG ADJ, FRONT WHEEL
110	R	1.00	T5054	EA	CALIBRATION PROCEDURE FOR CAB GAUGES
115	R	1.00	T5080A	EA	WEIGH SYS TEST PROCDR
116	R	1.00	T5100P	EA	WEIGH SYS CONFIG DATA
120	R	1.00	T5083A	EA	TOWING INSTR. -BRAKES
140	R	1.00	T5094A	EA	DUMP SYS TEST PROC
150	R	1.00	T5095A	EA	STR SYS TEST PROC
160	R	1.00	T5096A	EA	BRAKE SYS TEST PROC
165	R	1.00	T5099A	EA	N2/OIL SUSP CHG PROC. FRONT AND REAR
170	R	1.00	02-475	EA	SPEC, STANDARD TORQUE
175	R	1.00	02-563	EA	SPEC, WELD
180	R	1.00	02-579	EA	SPEC-TORQUE HYDR FITT
190	R	1.00	949765	EA	PROCEDURES, PAINTING FOR SAFETY PAINT

DR.
Robinson

ENGR. APPR.
NIELSEN

REL. CK.
ELLIS

91054
E.N. NO.



TECHNICAL DATA MODULE

SHEET 1 OF 1

ASSY.
NO. MH111-130

MH111-150

ALBERT

THIS DOCUMENT CONTAINS INFORMATION PROPRIETARY TO
UNIT RIG, A DIVISION OF TEREX CORPORATION. IT SHALL NOT BE
REPRODUCED, USED OR DISCLOSED TO ANYONE WITHOUT PRIOR
WRITTEN PERMISSION OF UNIT RIG.
© COPYRIGHT DATE -----

ITM	QTY PER ASSY	COMPONENT	DESCRIPTION
10	1.00	80113M	EA RIM ASSEMBLY RIMEX 29X57 RIMS. FOR ALL (6) WHEELS.

DR.
Robinson

ENG. DES.
NIELSEN

REL. CK.
ELLIS

91054
E.N. NO.



TIRE & RIM MODULE

SHEET 1 OF 1

ASSY.
NO. MH111-150

THIS DOCUMENT CONTAINS INFORMATION PROPRIETARY TO
 DIVISION OF TEREX CORPORATION. IT SHALL NOT BE
 REPRODUCED, USED OR DISCLOSED TO ANYONE WITHOUT PRIOR
 WRITTEN PERMISSION OF UNIT RIG.

MH111-160

AVERT

© COPYRIGHT DATE -----

DR.
Robinson
 ENG. APP.
 NIELSEN
 REL. CK.
 ELLIS

ITM	QTY PER ASSY	COMPONENT		DESCRIPTION
10	1.00	A84207A	EA	AXLE BOX W/BP (MACH) MT4400 W/787 WHL MTRS SLEEVED BUSHING BORES REQUIRES 5" MTG BOLTS
20	1.00	83650A	EA	BEAM, FRT AXLE (MACH)
30	1.00	A84175F	EA	FRAME BRKTS ASSY, ROPS MT4400 W/DDC 16V149.
40	1.00	A84173A	EA	S/STRUCT, FLR PL/BRKTS FOR MT4400 R. O. P. S. S/STRUCTURE -- INCLUDES: 10GA & 3/16 DECKING & 16GA BOTTOM COVERING -- BOLT-ON COVERS TO CAB MOUNTS. NOTE: NONSLIP COATING TO BE APPLIED TO TOP SURFACE @ FINAL ASSY.

91054
 E.N. NO.



MAJOR FAB MODULE

SHEET 1 OF 1

ASSY.
 NO. MH111-160

THIS DOCUMENT CONTAINS INFORMATION PROPRIETARY TO
 UNIT RIG, A DIVISION OF TEREX CORPORATION. IT SHALL NOT BE
 REPRODUCED, USED OR DISCLOSED TO ANYONE WITHOUT PRIOR
 WRITTEN PERMISSION OF UNIT RIG.

MH111-170

AVERT

© COPYRIGHT DATE

DR.
Robinson
 ENG. APP.
 NIELSEN
 REL. CK.
 ELLIS

ITM		QTY PER ASSY	COMPONENT		DESCRIPTION
10		1.00	A84263G	EA	BODY MOUNTING ASSY MT4400. KEYED PINS. MOLDED PADS. BRONZE BUSHINGS.
30		1.00	A84294H	EA	DUMP BODY ASSEMBLY VOLUMES ARE (YD3): STRUCK (SAE)=177 2: 1 (WORKING)=190 ----- MATERIAL USED: FLOOR=3/4 02-578 SIDES=3/8 02-578 FRONT=1/2 02-578 CANOPY=1/4 02-578 ----- 330" FLOOR EQUIPPED TO ACCEPT STANDARD BODY HEAT OPTION.
40		1.00	84410A	EA	DUMP BODY GUIDE ASSY MT4400
50		1.00	A84785A	EA	DUMP BODY LOCKUP ASSY MT4400 315" FLOOR FULL RAISE (40 DEG) OR 330" FLOOR FULL RAISE (43 DEG).
60	R	1.00	84033A	EA	DUMP BODY MANUF. ASSY REQ'D FOR CENTER SPLIT BODY.
80	R	15.00	56300E	GL	PAINT, LH YELLOW LOW HAPS. 147-130
90	R	15.00	56300C	GL	PAINT, PRIMER, LH GRAY LOW HAPS. 492-55
100		1.00	A84735A	EA	ROCK DEFLECTOR ASSY 8" WIDE X 72" LONG DEFL. BOTH SIDES.
120		1.00	A84091B	EA	ROCK EJECTOR ASSY FOR MT4400 W/TAPERED BOLSTERS. HAS SINGLE HANGING POINT AND EJECTOR STOWS UP.
130	R	1.00	83288C	EA	SIDEBOARD ASSY, 6"

91054
 E.N. NO.



DUMP BODY MODULE

SHEET 1 OF 1

ASSY.
 NO. MH111-170

MH111-190

AVERT

THIS DOCUMENT CONTAINS INFORMATION PROPRIETARY TO
UNIT RIG, A DIVISION OF TEREX CORPORATION. IT SHALL NOT BE
REPRODUCED, USED OR DISCLOSED TO ANYONE WITHOUT PRIOR
WRITTEN PERMISSION OF UNIT RIG.
© COPYRIGHT DATE

ITM	QTY PER ASSY	COMPONENT		DESCRIPTION
10	1.00	84602E	EA	COMPUTER KIT, LAPTOP
11	1.00	55948	EA	CABLE, 9 PIN SERIAL
20	1.00	82681F	EA	KIT, CHARGING NITROGEN FOR CHARGING OF ACCUMULATORS & SUSP. S W/NITROGEN. FITTINGS FOR STD GAS VALVES, STAUFF TEST PORTS, & SMR SUSPS.
30	1.00	82681A	EA	KIT, SUSPENSION OIL CHR.G. NOTE: THIS KIT REQ'D TO FILL N2/OIL SUSPNS WITH HYDRAULIC OIL.
35	5.00	79544E	EA	KIT, TRUCK ERECTION
40	1.00	80857J	EA	LIFTER, ENGINE MODULE 16V4000 IN MT4400
50	1.00	916362	EA	O'RING KIT-HYDRAULIC
60	1.00	A84922A	EA	SOFTWARE, STATEX III VERSION 12.10 PTU SOFTWARE
61	1.00	A84922U	EA	SOFTWARE, STATEX 3 CFG BORAX MH111-137 VER 12.10 CFG FILE
65	4.00	70643A	EA	TRUCK LIFTER REAR
70	1.00	A83985F	EA	WEIGH SYS IBM PROGRAM
71	1.00	A84677C	EA	ACCESS DB TEMPLATE

DR.
Robinson
ENG. APP.
NIELSEN
REL. CK.
ELLIS

91054
E.N. NO.



TOOL & FIXTURE MODULE

SHEET 1 OF 1

ASSY.
NO. MH111-190

