

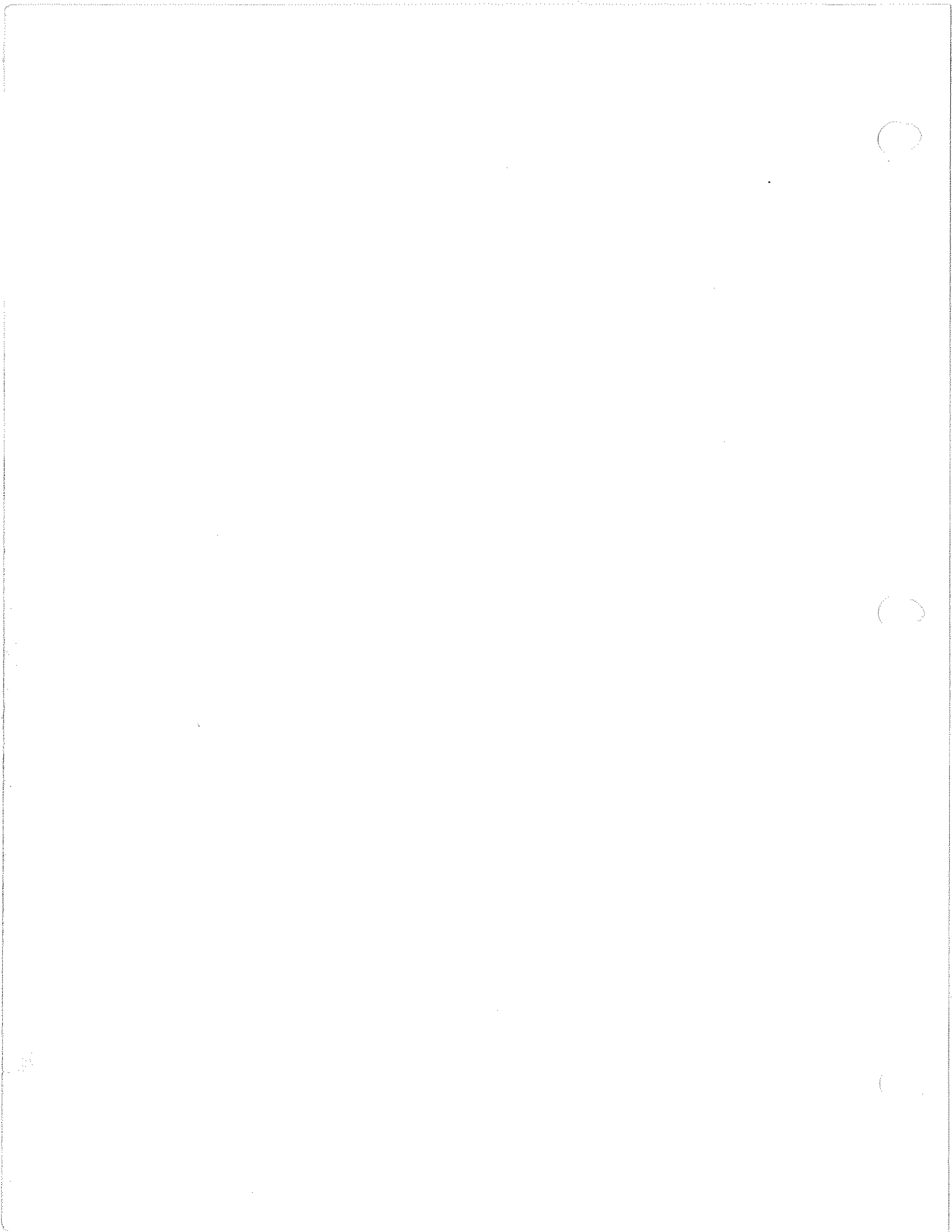
SECTION 6 - PIPING

DESCRIPTION

Auto Lube Assembly
Central Service Assembly
Lube Assembly, Auto
Service Assembly, Central

ASSEMBLY NUMBER

A85188A
A84279G
A85188A
A84279G



A84279

THIS DOCUMENT CONTAINS INFORMATION PROPRIETARY TO
 UNIT RIG, A DIVISION OF TEREX CORPORATION. IT SHALL NOT BE
 REPRODUCED, USED OR DISCLOSED TO ANYONE WITHOUT PRIOR
 WRITTEN PERMISSION OF UNIT RIG.
 COPYRIGHT DATE 2/01/95

BY
 DODEN
 ENG APP
 ROBINSON
 REC CC
 ELLIS

90934

90090

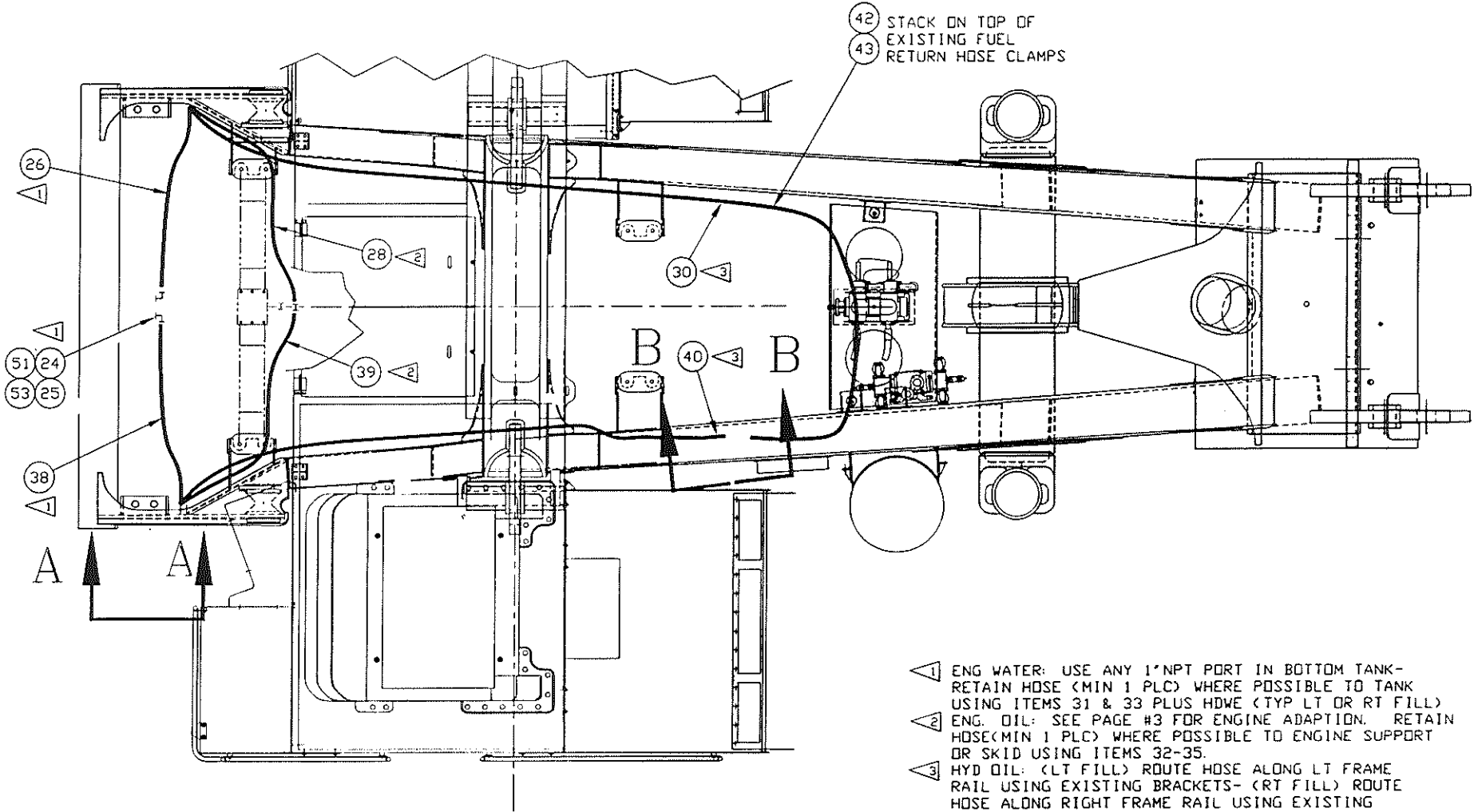
89981

89900

88724

88614

E.N. NO.



42 STACK ON TOP OF
 43 EXISTING FUEL
 RETURN HOSE CLAMPS

- 1 ENG WATER: USE ANY 1" NPT PORT IN BOTTOM TANK-
 RETAIN HOSE (MIN 1 PLC) WHERE POSSIBLE TO TANK
 USING ITEMS 31 & 33 PLUS HDWE (TYP LT OR RT FILL)
- 2 ENG. OIL: SEE PAGE #3 FOR ENGINE ADAPTION. RETAIN
 HOSE (MIN 1 PLC) WHERE POSSIBLE TO ENGINE SUPPORT
 OR SKID USING ITEMS 32-35.
- 3 HYD OIL: (LT FILL) ROUTE HOSE ALONG LT FRAME
 RAIL USING EXISTING BRACKETS- (RT FILL) ROUTE
 HOSE ALONG RIGHT FRAME RAIL USING EXISTING
 BOLT PADS AND CLAMP BRACKET USING ITEMS #42 & #43.
 ROUTE ACROSS PUMP PLATFORM USING ITEMS 31 & 33-35.
- 4 GREASE: COMPONENTS PER AUTOLUBE ASSY

NOTE
 CHECK ASSEMBLY NOTE (ITEM #50) FOR
 LOCATION OF FILL STATION
 USE TIE WRAPS AS REQ'D
 TO RETAIN HOSE



CENTRAL SERVICE ASSY

SHEET 1 OF 3
 A84279

AB4279

THIS DOCUMENT CONTAINS INFORMATION PROPRIETARY TO UNIT RIG, A DIVISION OF TEREX CORPORATION. IT SHALL NOT BE REPRODUCED, USED OR DISCLOSED TO ANYONE WITHOUT PRIOR WRITTEN PERMISSION OF UNIT RIG. COPYRIGHT DATE

DODEN

CR APP.

REL. CR.

90934

90090

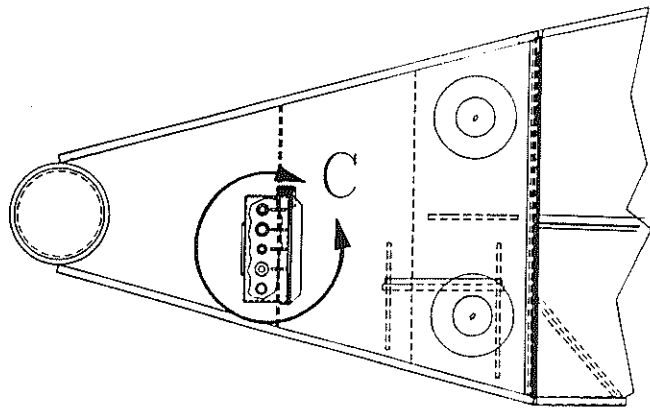
89981

89900

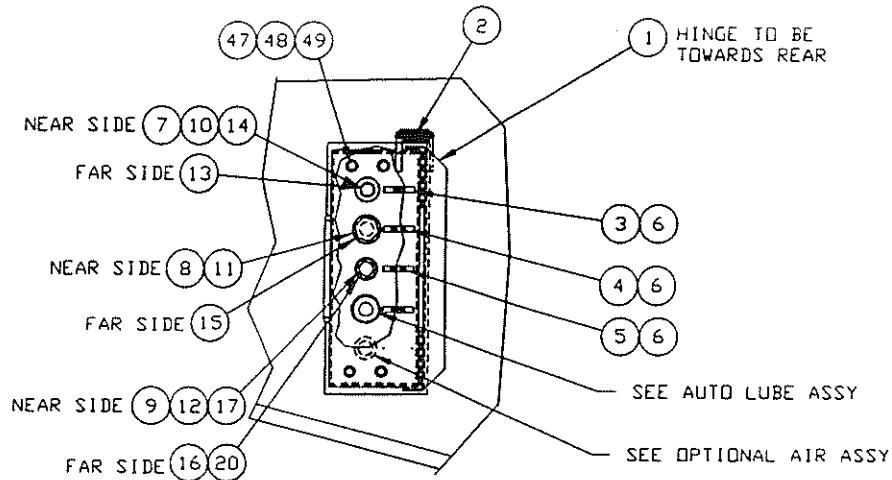
88724

88614

E.N. NO.



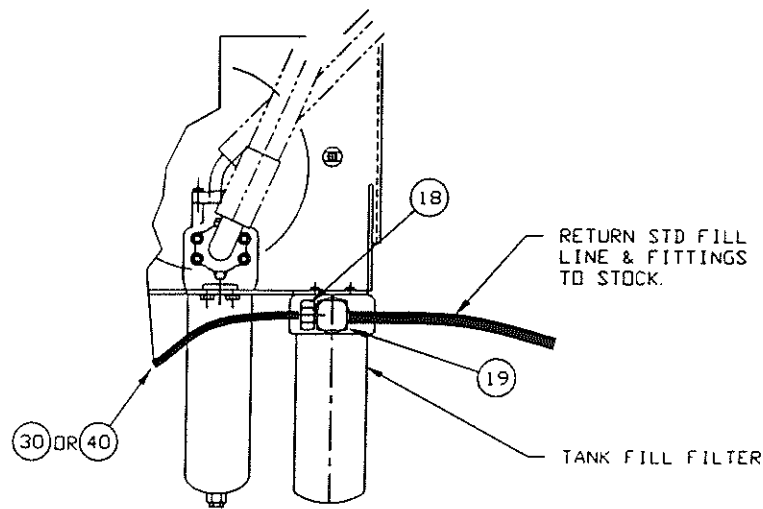
VIEW A-A



VIEW C-C

NOTE:

CHECK ASSEMBLY NOTE (ITEM #50) FOR LOCATION OF FILL STATION
LEFT HAND FILL SHOWN
RIGHT HAND FILL SAME LOCATION ON OPPOSITE SIDE



VIEW B-B



GA-2

CENTRAL SERVICE ASSY

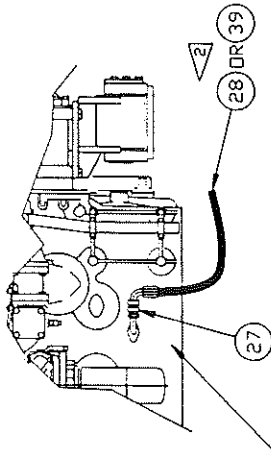
SHEET 2 OF 3

A84279

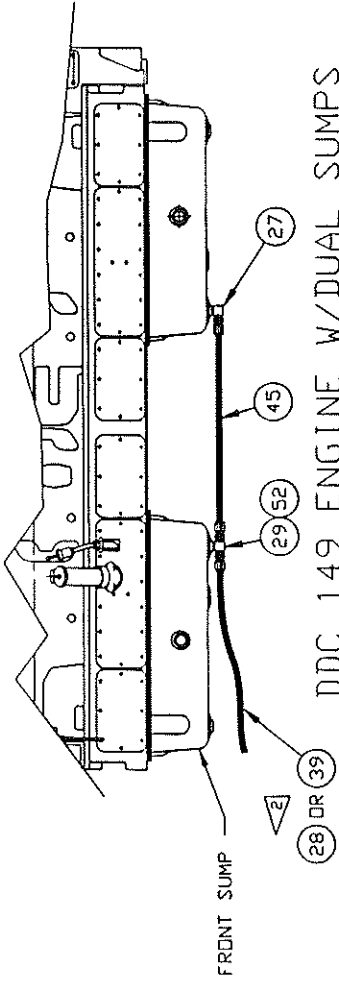
A84279

THIS DOCUMENT CONTAINS INFORMATION PROPRIETARY TO
UNIT RIG, A DIVISION OF TEREX CORPORATION. IT SHALL NOT BE
REPRODUCED, USED OR DISCLOSED TO ANYONE WITHOUT PRIOR
WRITTEN PERMISSION OF UNIT RIG.
COPYRIGHT DATE

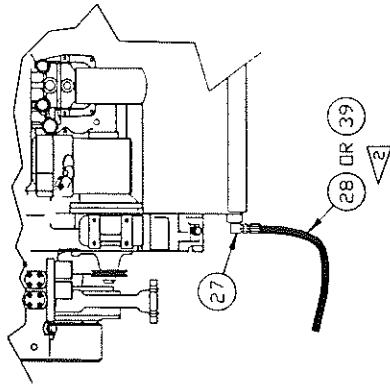
PK	DODDEN
ENC APP.	
REV. EX	
90934	
90090	
89981	
89900	
88724	
88614	
E.N. NO.	



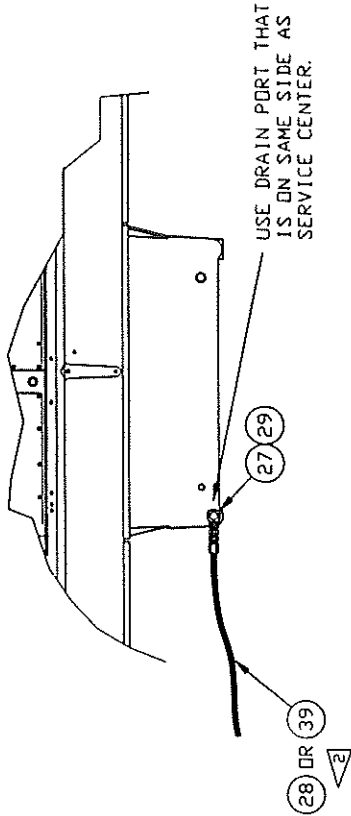
MTU 16V396 ENGINE



DDC 149 ENGINE W/DUAL SUMPS



DDC SERIES 4000 ENGINE



CUMMINS "K" ENGINE



CENTRAL SERVICE ASSY

SHEET 3 OF 3

A84279

THIS DOCUMENT CONTAINS INFORMATION PROPRIETARY TO
 UNIT RIG, A DIVISION OF TEREX CORPORATION. IT SHALL NOT BE
 REPRODUCED, USED OR DISCLOSED TO ANYONE WITHOUT PRIOR
 WRITTEN PERMISSION OF UNIT RIG.

A84279G

AVERT

© COPYRIGHT DATE 3-16-99

DR.
 DODEN

ENG. APP.

REL. CK.
 ELLIS

ITM	QTY PER ASSY	COMPONENT	DESCRIPTION
1	1.00	69537J	COVER, CENTRAL SERVICE
2	.00	6316	SPRING
3	1.00	69514B	NAMEPLATE (WATER)
4	1.00	69514C	NAMEPLATE(ENGINE OIL)
5	1.00	69514A	NAMEPLATE (HYD OIL)
6	6.00	15914	SCR, DR #2 X 3/16 LG
7	1.00	24498	NIPPLE-VALVE
8	1.00	24496	NIPPLE-VALVE
9	1.00	25561	NIPPLE-VALVE
10	1.00	1013662	CAP, DUST
11	1.00	1011565	CAP, DUST
12	1.00	28944	CAP, DUST
13	1.00	22835	ADAPTER, STRAIGHT #8 JIC, MALE X 3/4 NPTF, MALE
14	1.00	17161	BUSH, 3/4X1/2NPT MI 150PSI HEX
15	1.00	22625	ADAPTER, 45 DEG #16 JIC, MALE X 3/4 NPTF, MALE
16	1.00	1044473	ADAPTER, 45 DEG #8 JIC, MALE X 3/4 NPT, MALE
17	1.00	10194	BUSH, 3/4X3/8NPT MI 150PSI HEX
18	1.00	29128	ADAPTER, SWVL REDUCER #12 JIC, FEMALE X #8 JIC, MALE
19	1.00	24619	ADAPTER, 90 DEG #12 JIC, MALE X #16 O-RING, MALE
24	1.00	10198	BUSH, 1X3/4NPT MI 150PSI HEX
25	1.00	1001156	ADAPTER, 90 DEG #8 JIC, MALE X 3/4 NPTF, MALE
27	1.00	19115	ADAPTER, 90 DEG #16 JIC, MALE X 3/4 NPTF, MALE
31	6.00	17141	CLAMP-CUSHION 7/8 7/8" ID
32	3.00	17143	CLAMP-CUSHION 1-9/16" ID
33	10.00	948634	PAD, BOLTING 3/8 NC 3/4 OD X 3/4 LG
34	10.00	10011	CAPSCR, HX, 3/8-16NC X 3/4 GR 5
35	10.00	10180	WSHR, LK, HELI, 3/8 X .683 OD

MH11-15

90934

E.N. NO.



CENTRAL SERVICE ASSEM

SHEET 1 OF 2

A84279G

THIS DOCUMENT CONTAINS INFORMATION PROPRIETARY TO
 UNIT RIG, VISION OF TEREX CORPORATION. IT SHALL NOT BE
 REPRODUCED, USED OR DISCLOSED TO ANYONE WITHOUT PRIOR
 WRITTEN PERMISSION OF UNIT RIG.
 © COPYRIGHT DATE -----

A84279G

AVERT

ITM	QTY PER ASSY	COMPONENT	DESCRIPTION
36	12.00	18402	TIE, WRAP 3/16 TO 3-1/2 BUNDLE
38	1.00	22090	HOSE ASSY 211-08 60" LG W/319-08 FTGS
39	1.00	53594	HOSE ASSY 1503-16 85" LG W/411 & 190261 FTGS
40	1.00	22501	HOSE ASSY 211-08 206" LG W/319-08 FTGS
47	4.00	10015	CAPSCR, HX, 3/8-16NC X 1-3/4 GR 5
48	4.00	17413	NUT-HEX, FLXLC 3/8-16
49	4.00	10164	WSHR, FL, 3/8 X 1.000 OD
50	.00	N84279B	ASSEMBLY NOTE- NO DWG ***** INSTALL SERVICE STATION AT LEFT FRONT CORNER *****
99	.00	A84279	DWG ONLY, CENTRAL SVC *****

MT4400 W/16V4000 ENGINE
 ENGINE OIL
 HYDRAULIC OIL
 ENGINE COOLANT
 LOCATED L. H. FRONT

DR.
 DODEN

ENG. APP.

REL. CK.

90934

E.N. NO.



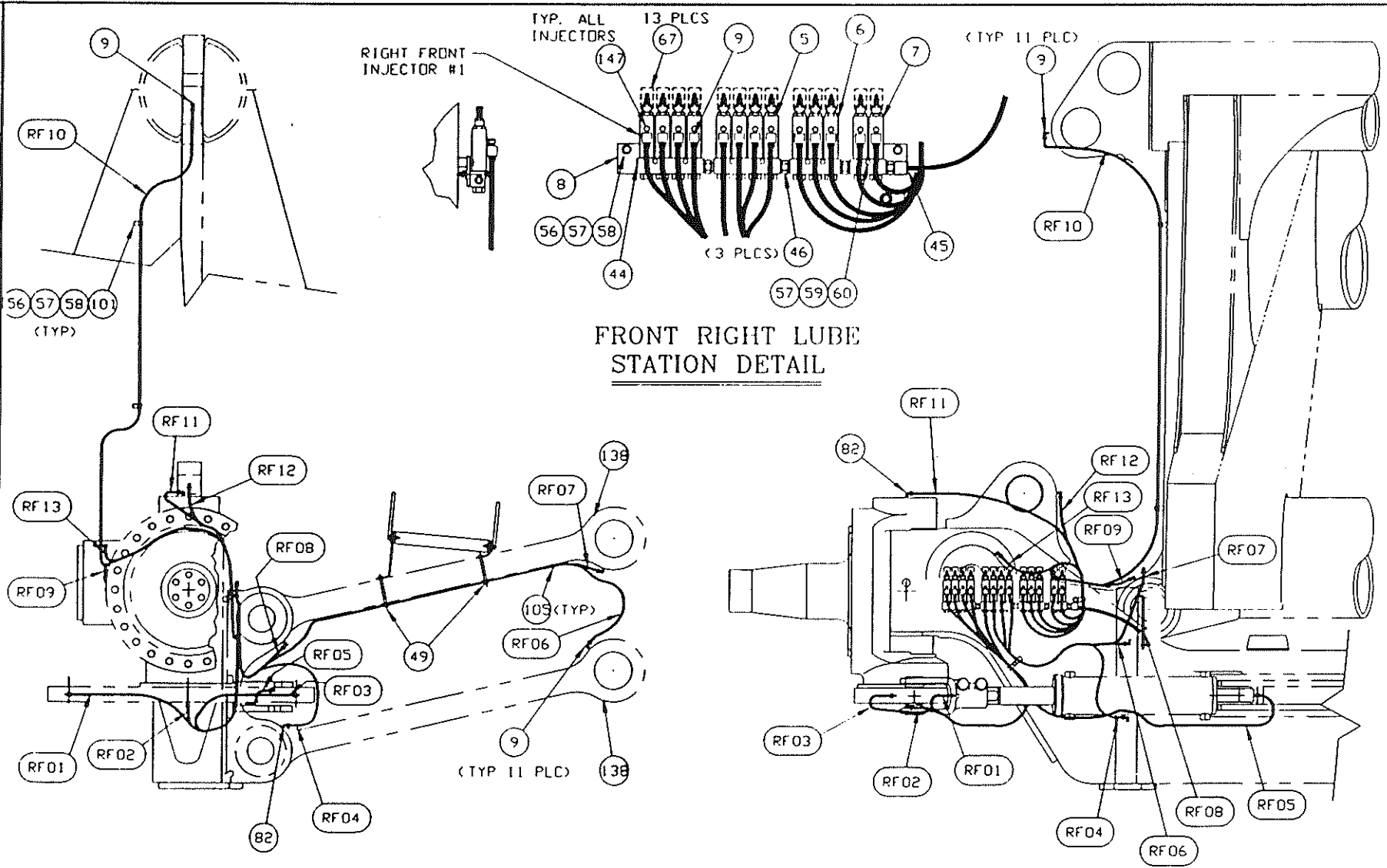
CENTRAL SERVICE ASSEMBLY

SHEET 2 OF 2

A84279G

THIS DOCUMENT CONTAINS INFORMATION PROPRIETARY TO
UNIT RIG, A DIVISION OF TEREX CORPORATION. IT SHALL NOT BE
REPRODUCED, USED OR DISCLOSED TO ANYONE WITHOUT PRIOR
WRITTEN PERMISSION OF UNIT RIG.
COPYRIGHT DATE

A85188



91037
90982
E N NO

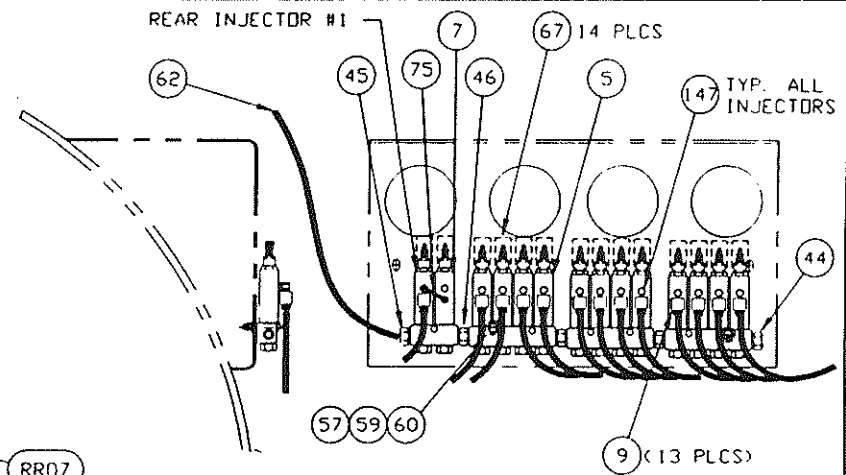
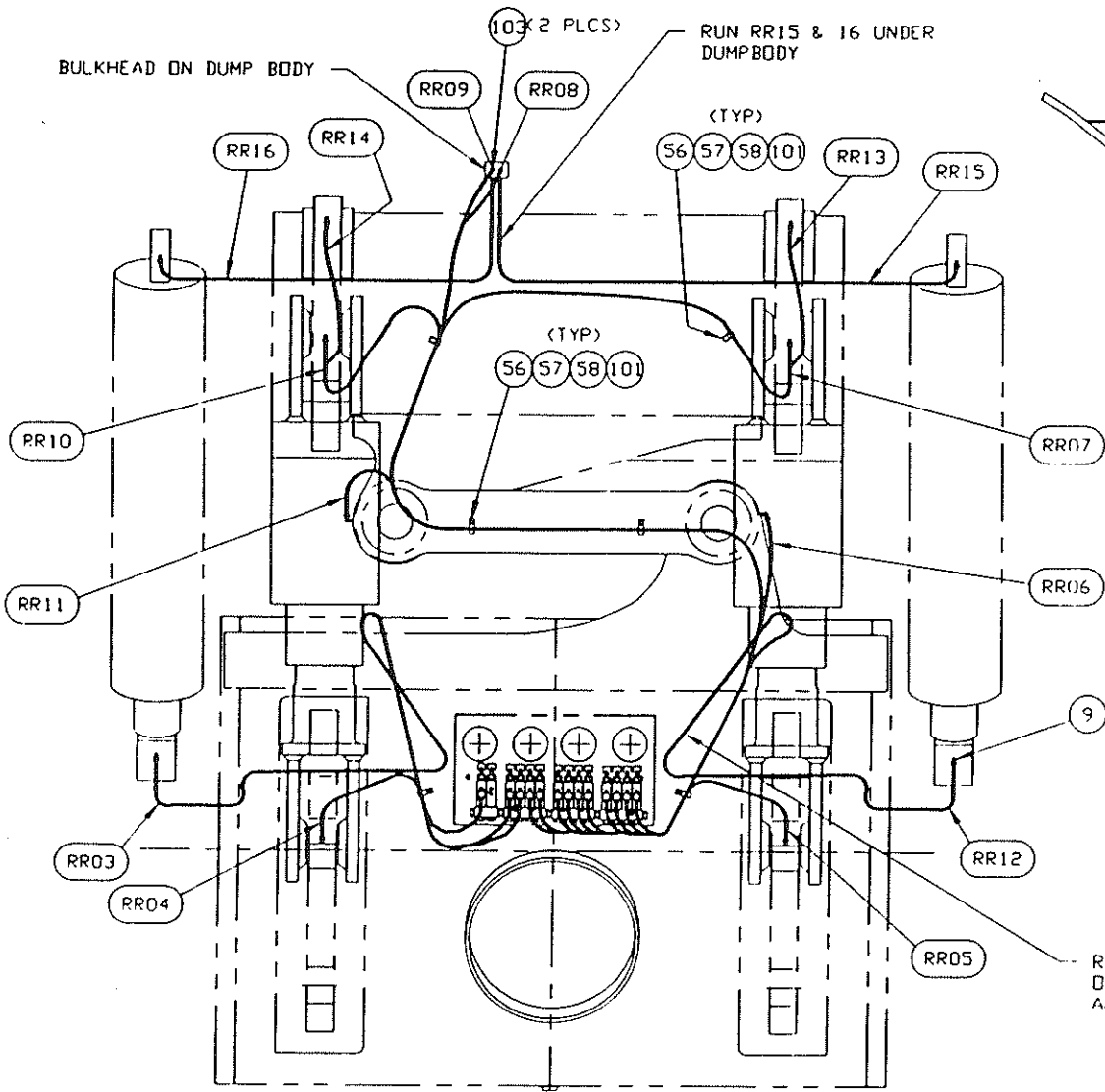


AUTO LUBE ASSY

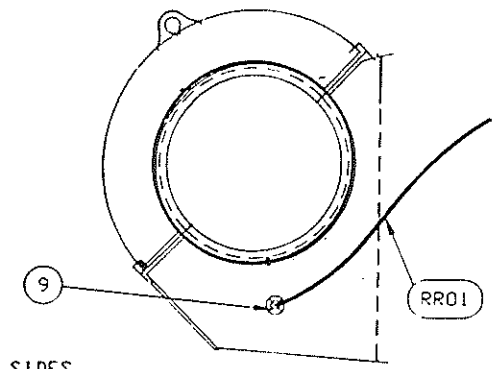
PAGE 2 OF 10

A85188

THIS DOCUMENT CONTAINS INFORMATION PROPRIETARY TO UNIT RIG, A DIVISION OF TEREX CORPORATION. IT SHALL NOT BE REPRODUCED, USED OR DISCLOSED TO ANYONE WITHOUT PRIOR WRITTEN PERMISSION OF UNIT RIG. COPYRIGHT DATE



REAR LUBE STATION DETAIL

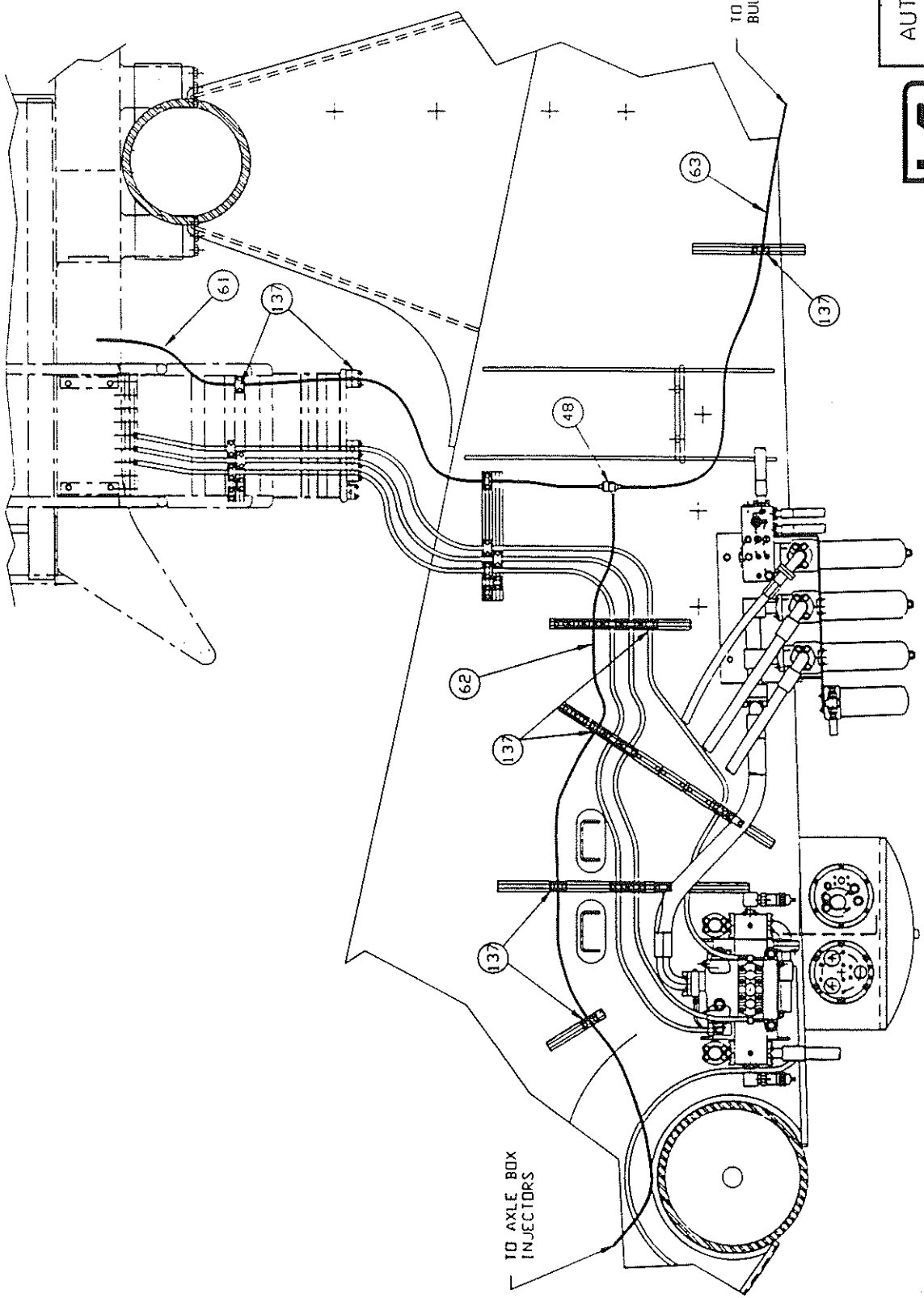


RUN RR03 & RR12 ALONG SIDES OF NOSECONE TO FRAME CROSSMEMBER AND THEN UNDER FRAME TO CYLINDERS

91037
90982
E N NO



AUTO LUBE ASSY
PAGE 3 OF 10
A85188



AUTO LUBE ASSY

PAGE 4 OF 10

A85188

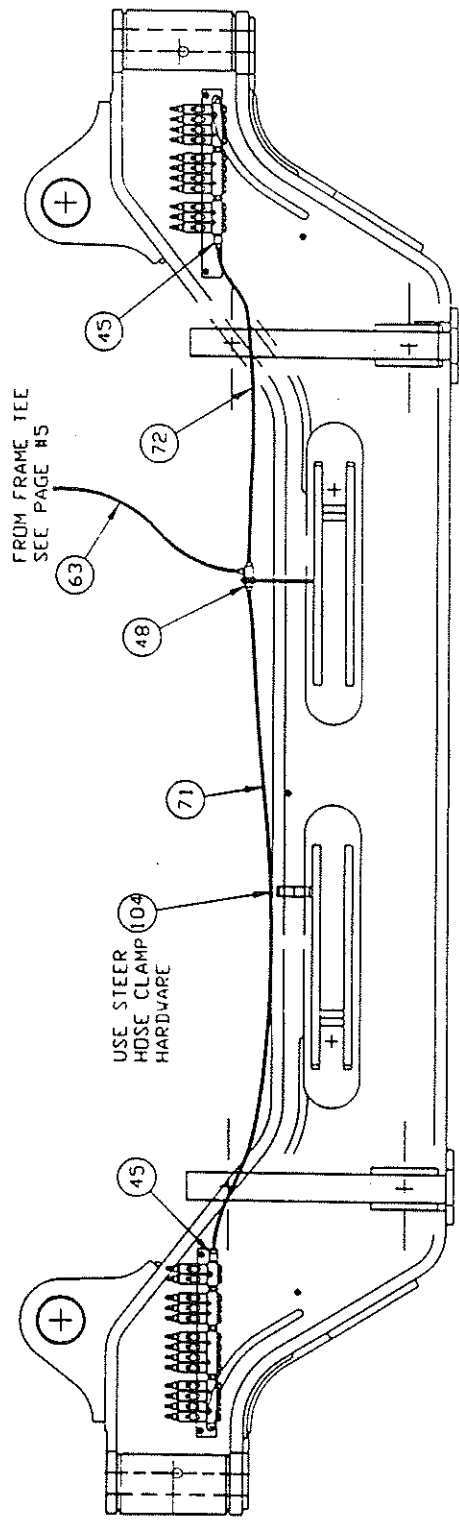
A85188

THIS DOCUMENT CONTAINS INFORMATION PROPRIETARY TO UNIT RIG, A DIVISION OF TEREX CORPORATION. IT SHALL NOT BE REPRODUCED, USED OR DISCLOSED TO ANYONE WITHOUT PRIOR WRITTEN PERMISSION OF UNIT RIG. COPYRIGHT DATE

91037
90982
E N NO

THIS DOCUMENT CONTAINS INFORMATION PROPRIETARY TO
 UNIT RIG, A DIVISION OF TEREX CORPORATION IT SHALL NOT BE
 REPRODUCED, USED OR DISCLOSED TO ANYONE WITHOUT PRIOR
 WRITTEN PERMISSION OF UNIT RIG
 COPYRIGHT DATE

A85198



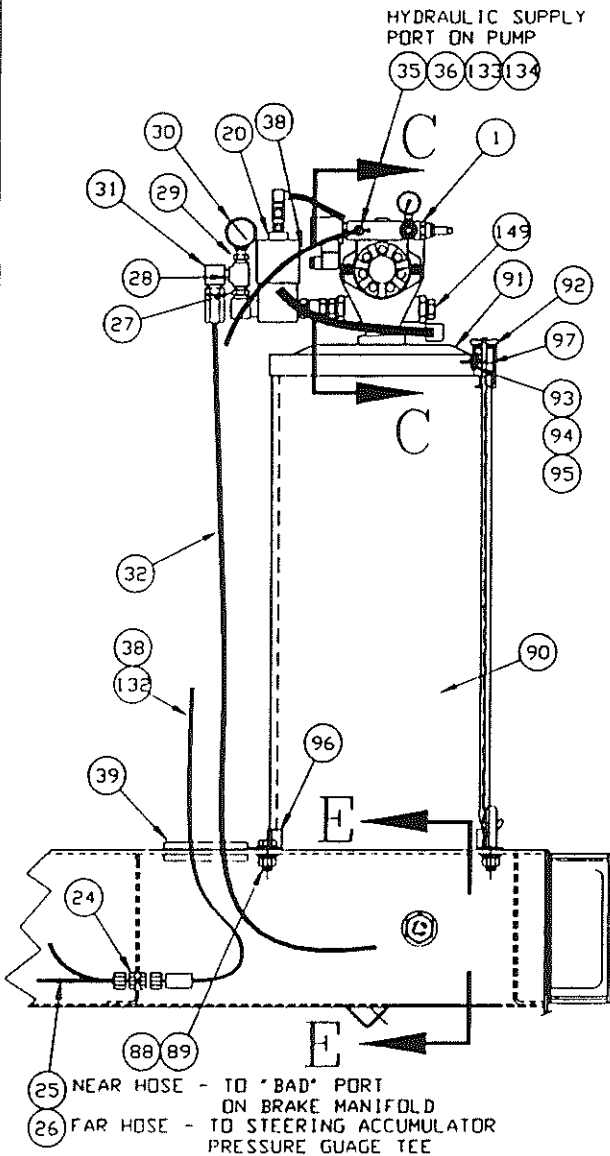
AUTO LUBE ASSY
 PAGE 5 OF 10
 A85188



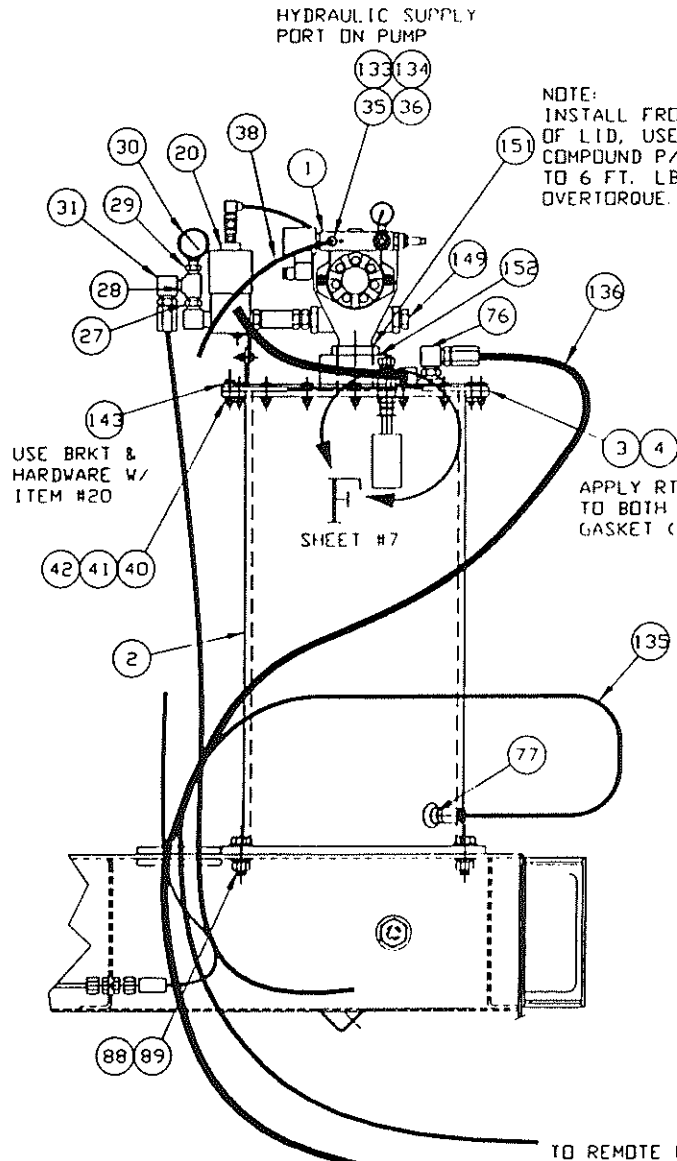
EN. NO.
 90982
 91037

THIS DOCUMENT CONTAINS INFORMATION PROPRIETARY TO
 UNIT RIG, A DIVISION OF TEREX CORPORATION. IT SHALL NOT BE
 REPRODUCED, USED OR DISCLOSED TO ANYONE WITHOUT PRIOR
 WRITTEN PERMISSION OF UNIT RIG.
 COPYRIGHT DATE

AB5188



UNITS WITHOUT REMOTE GREASE DRUM FILL



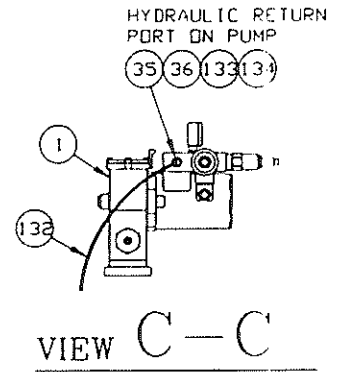
UNITS WITH REMOTE GREASE DRUM FILL

NOTE:
 INSTALL FROM BOTTOM SIDE
 OF LID. USE THREAD LOCKING
 COMPOUND P/N 25764, (TORQUE
 TO 6 FT. LBS., DO NOT
 OVERTORQUE.

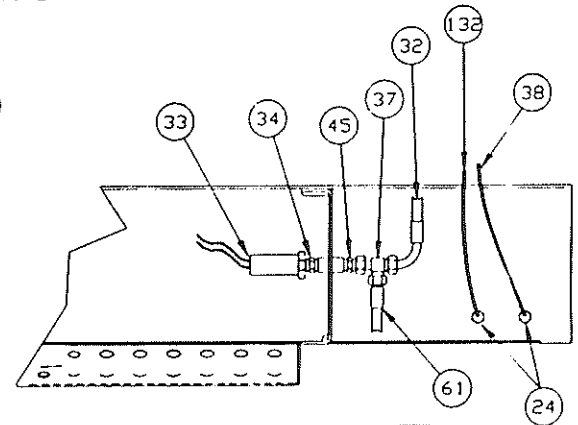
USE BRKT &
 HARDWARE W/
 ITEM #20

APPLY RTV SEALANT
 TO BOTH SIDES OF
 GASKET (ITEM 4)

SHEET #7



VIEW C-C



VIEW E-E

91037

90982

EN NO.

TO REMOTE FILL
 LOCATION

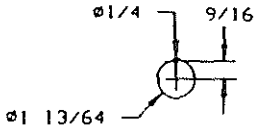
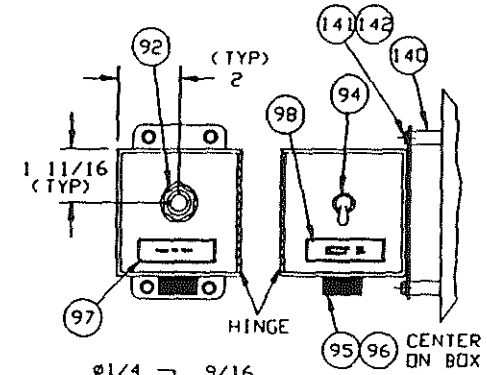


AUTO LUBE ASSY

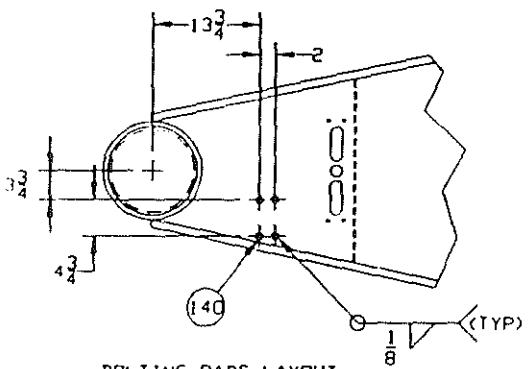
PAGE 6 OF 10

A85188

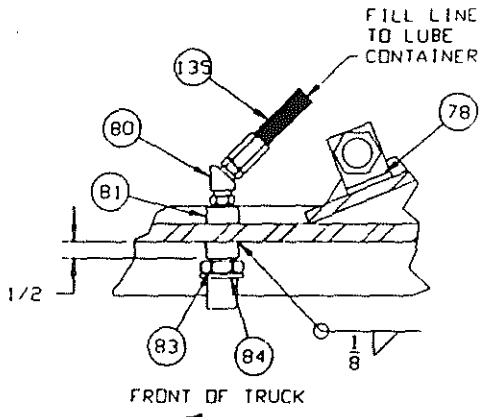
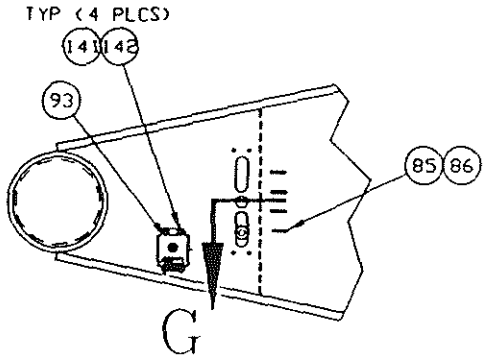
THIS DOCUMENT CONTAINS INFORMATION PROPRIETARY TO
 UNIT RIG, A DIVISION OF TEREX CORPORATION. IT SHALL NOT BE
 REPRODUCED, USED OR DISCLOSED TO ANYONE WITHOUT PRIOR
 WRITTEN PERMISSION OF UNIT RIG
 COPYRIGHT DATE



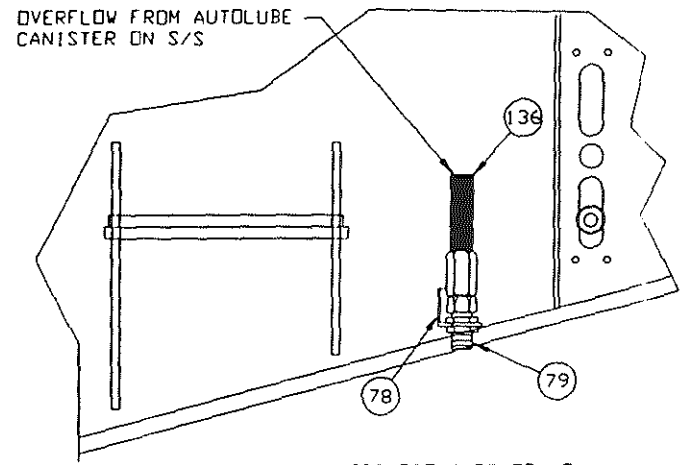
HOLE LAYOUT
FOR ITEM 92



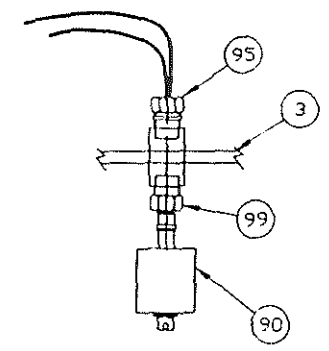
BOLTING PADS LAYOUT
FOR ITEM 93



VIEW G



INSIDE FRONT OF FRAME
L. H. SHOWN



VIEW F

NOTE:
 CHECK ASSEMBLY NOTE (ITEM #150) FOR
 LOCATION OF FILL STATION
 LEFT HAND FILL SHOWN
 RIGHT HAND FILL SAME LOCATION
 ON OPPOSITE SIDE



THIS DOCUMENT CONTAINS INFORMATION PROPRIETARY TO
 UNIT RIG DIVISION OF TEREX CORPORATION. IT SHALL NOT BE
 REPRODUCED, USED OR DISCLOSED TO ANYONE WITHOUT PRIOR
 WRITTEN PERMISSION OF UNIT RIG.
 © COPYRIGHT DATE

A85188

ALYER

DR.

ENG. APP.

REL. CK.

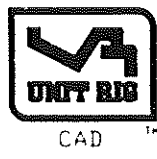
37

90982

E.N. NO.

HOSE NO	ITEM NO.	LOCATION
RR01	121	FROM REARLUBE INJECTOR #1 TO NOSE CONE BUSHING
RR02	075	FROM REARLUBE INJECTOR #2 TO REARLUBE INJECTOR #1
RR03	120	FROM REARLUBE INJECTOR #3 TO BOTTOM LEFT DUMP CYLINDER PIN
RR04	122	FROM REARLUBE INJECTOR #4 TO BOTTOM LEFT SUSPENSION PIN
RR05	123	FROM REARLUBE INJECTOR #5 TO BOTTOM RIGHT SUSPENSION PIN
RR06	124	FROM REARLUBE INJECTOR #6 TO RIGHT PANHARD ROD PIN
RR07	127	FROM REARLUBE INJECTOR #7 TO TOP RIGHT SUSPENSION PIN
RR08	125	FROM REARLUBE INJECTOR #8 TO DUMPBODY BULKHEAD RIGHT HOLE
RR09	125	FROM REARLUBE INJECTOR #9 TO DUMPBODY BULKHEAD LEFT HOLE
RR10	128	FROM REARLUBE INJECTOR #10 TO TOP LEFT SUSPENSION PIN
RR11	129	FROM REARLUBE INJECTOR #11 TO LEFT PANHARD ROD PIN
RR12	120	FROM REARLUBE INJECTOR #12 TO BOTTOM RIGHT DUMP CYLINDER PIN
RR13	130	FROM REARLUBE INJECTOR #13 TO RIGHT DUMP BODY PIVOT BUSHING
RR14	131	FROM REARLUBE INJECTOR #14 TO LEFT DUMP BODY PIVOT BUSHING
RR15	126	FROM DUMPBODY BULKHEAD RIGHT HOLE TO TOP RIGHT DUMP CYLINDER PIN
RR16	126	FROM DUMPBODY BULKHEAD LEFT HOLE TO TOP LEFT DUMP CYLINDER PIN

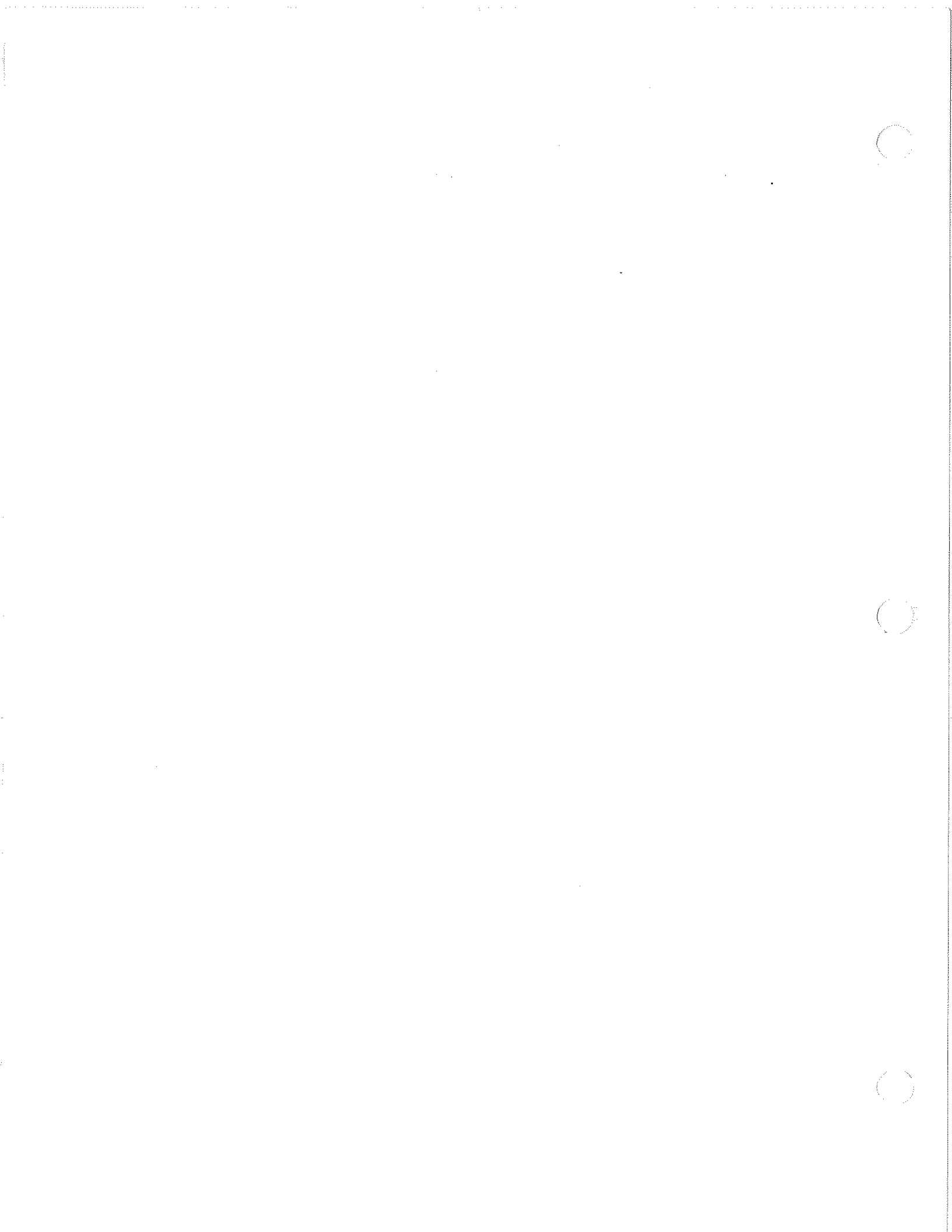
LUBE HOSES ON
 REAR LUBE
 STATION



AUTO LUBE ASSY

SHEET 10 OF 10

A85188



THIS DOCUMENT CONTAINS INFORMATION PROPRIETARY TO
 UNIT RIG DIVISION OF TEREX CORPORATION. IT SHALL NOT BE
 REPRODUCED, USED OR DISCLOSED TO ANYONE WITHOUT PRIOR
 WRITTEN PERMISSION OF UNIT RIG.
 © COPYRIGHT DATE

A85188

HOSE NO	ITEM NO.	LOCATION
LF01	107	FROM LEFT FRONT INJECTOR #1 TO BOTTOM SUSPENSION PIN
LF02	108	FROM LEFT FRONT INJECTOR #2 TO TOP OF KINGPIN
LF03	109	FROM LEFT FRONT INJECTOR #3 TO TOP SUSPENSION PIN
LF04	110	FROM LEFT FRONT INJECTOR #4 TO REAR TOP TRAILING ROD PIN
LF05	111	FROM LEFT FRONT INJECTOR #5 TO FRONT TOP TRAILING ROD PIN
LF06	112	FROM LEFT FRONT INJECTOR #6 TO FRONT BOTTOM TRAILING ROD PIN
LF07	113	FROM LEFT FRONT INJECTOR #7 TO STEERING CYLINDER PIN AT ANCHOR
LF08	114	FROM LEFT FRONT INJECTOR #8 TO REAR BOTTOM TRAILING ROD PIN
LF09	115	FROM LEFT FRONT INJECTOR #9 TO STEERING CYLINDER PIN AT ARM
LF10	116	FROM LEFT FRONT INJECTOR #10 TO BOTTOM OF KINGPIN
LF11	117	FROM LEFT FRONT INJECTOR #11 TO TIE ROD PIN

LUBE HOSES ON
LEFT FRONT
LUBE STATION

AUTO LUBE ASSY

SHEET 8 OF 10
A85188



91037
90982
E.N. NO.

THIS DOCUMENT CONTAINS INFORMATION PROPRIETARY TO
 UNIT RIG, A DIVISION OF TEREX CORPORATION. IT SHALL NOT BE
 REPRODUCED, USED OR DISCLOSED TO ANYONE WITHOUT PRIOR
 WRITTEN PERMISSION OF UNIT RIG.
 © COPYRIGHT DATE

A85188

HOSE NO	ITEM NO.	LOCATION
RF01	117	FROM RIGHT FRONT INJECTOR #1 TO TIE ROD PIN
RF02	116	FROM RIGHT FRONT INJECTOR #2 TO BOTTOM OF KINGPPIN
RF03	115	FROM RIGHT FRONT INJECTOR #3 TO STEERING CYLINDER PIN AT ARM
RF04	114	FROM RIGHT FRONT INJECTOR #4 TO REAR BOTTOM TRAILING ROD PIN
RF05	113	FROM RIGHT FRONT INJECTOR #5 TO STEERING CYLINDER PIN AT ANCHOR
RF06	112	FROM RIGHT FRONT INJECTOR #6 TO FRONT BOTTOM TRAILING ROD PIN
RF07	111	FROM RIGHT FRONT INJECTOR #7 TO FRONT TOP TRAILING ROD PIN
RF08	110	FROM RIGHT FRONT INJECTOR #8 TO REAR TOP TRAILING ROD PIN
RF09	118	FROM RIGHT FRONT INJECTOR #9 TO INBOARD PANHARD ROD PIN
RF10	109	FROM RIGHT FRONT INJECTOR #10 TO TOP SUSPENSION PIN
RF11	108	FROM RIGHT FRONT INJECTOR #11 TO TOP OF KINGPIN
RF12	107	FROM RIGHT FRONT INJECTOR #12 TO BOTTOM SUSPENSION PIN
RF13	119	FROM RIGHT FRONT INJECTOR #13 TO OUTBOARD PANHARD ROD PIN

LUBE HOSES ON
RIGHT FRONT
LUBE STATION

91037
90982
E.N. NO.



AUTO LUBE ASSY
SHEET 9 OF 10
A85188

THIS DOCUMENT CONTAINS INFORMATION PROPRIETARY TO
 UNIT RIG DIVISION OF TEREX CORPORATION. IT SHALL NOT BE
 REPRODUCED OR DISCLOSED TO ANYONE WITHOUT PRIOR
 WRITTEN PERMISSION OF UNIT RIG.

A85188A

ANVCRT

© COPYRIGHT DATE -----

DR.

Robinson

ENG. APP.

NIELSEN

REL. CK.

ELLIS

ITM	QTY PER ASSY	COMPONENT	DESCRIPTION
1	1.00	* 56341 *	PUMP, GREASE
2	1.00	83442B	CONTAINER, GREASE
3	1.00	83443E	LID, GREASE CONTAINER
4	1.00	83444A	GASKET-FLANGE
5	4.00	* 18744 *	MANIFOLD-4 INJECTOR
5	3.00	* 18744 *	MANIFOLD-4 INJECTOR
6	2.00	* 23884 *	MANIFOLD-3 INJECTOR
7	1.00	* 19646 *	MANIFOLD-2 INJECTOR
7	1.00	* 19646 *	MANIFOLD-2 INJECTOR
8	2.00	83445A	BRACKET-LUBE INJECTOR
9	44.00	17629	ADAPTER, 90 DEG #4 JIC, MALE X 1/8 NPTF, MALE
9	17.00	17629	ADAPTER, 90 DEG #4 JIC, MALE X 1/8 NPTF, MALE
9	9.00	17629	ADAPTER, 90 DEG #4 JIC, MALE X 1/8 NPTF, MALE
20	1.00	* 55563 *	VENT VALVE KIT
21	1.00	17628	ADAPTER, STRAIGHT #4 JIC, MALE X 1/8 NPTF, MALE
24	2.00	53380-0404	ADAPTER, BULKHD, STR #4 DRS, MALE X #4 DRS, MALE
25	1.00	84301A-024	HOSE ASSY FC211-04 24' LG W/FJ9891 FTGS
26	1.00	84317A-052	HOSE ASSY FC310-04 52' LG W/FJ9891 & FJ9893 FTGS
27	1.00	17491	BUSH, 1/2X3/8NPT FS 6000PSI HEX
28	1.00	25177	TEE-STREET 3/8 NPT
29	1.00	1015712	BUSH, 3/8NPT X 1/4NPT FS 6000PSI HEX
30	1.00	20081	GAUGE-PRESS, OIL, MECH 0-5000 PSI
31	1.00	53369-0806	ADAPTER, 90 DRS/NPTF #8 DRS X 3/8 NPTF
32	1.00	84317C-049	HOSE ASSY FC310-08 49' LG W/FJ9891 & FJ9893 FTGS
33	1.00	51701	SWITCH - PRESSURE
34	1.00	1001307	ADAPTER, REDUCER, HEX 3/8 NPTF, MALE X 1/4 NPTF, MALE
37	1.00	53379-0808	ADAPTER, TEE DRS #8 DRS, FEMALE RUN X #8 DRS, MALE

***SEE SERVICE PARTS**



CAD™

AUTO LUBE ASSY.

SHEET 1 OF 5

ASSY.

NO. A85188A

91037

90982

E.N. NO.

THIS DOCUMENT CONTAINS INFORMATION PROPRIETARY TO
 UNIT RIG, A DIVISION OF TEREX CORPORATION. IT SHALL NOT BE
 REPRODUCED, USED OR DISCLOSED TO ANYONE WITHOUT PRIOR
 WRITTEN PERMISSION OF UNIT RIG.
 © COPYRIGHT DATE

A85188A

A85188A

ITM	QTY PER ASSY	COMPONENT	DESCRIPTION
38	1.00	84315A-064	HOSE ASSY FC310-04 64" LG W/FJ9891 FTGS
39	14.00	53322	TRIM-EDGES
40	16.00	10017	CAPSCR, HX, 3/8-16NC X 2-1/4 GR 5
41	10.00	10164	WSHR, FL, 3/8 X 1.000 OD
42	16.00	17413	NUT-HEX, FLXLC 3/8-16
44	2.00	17481	PLUG-PIPE 3/8 NPT 2,000 PSI FS SQ
44	1.00	17481	PLUG-PIPE 3/8 NPT 2,000 PSI FS SQ
45	1.00	53367-0806	ADAPTER, STR ORS/NPTF #8 ORS X 3/8 NPTF
45	1.00	53367-0806	ADAPTER, STR ORS/NPTF #8 ORS X 3/8 NPTF
45	2.00	53367-0806	ADAPTER, STR ORS/NPTF #8 ORS X 3/8 NPTF
46	5.00	24262	ADAPTER, NIPPLE, HEX 3/8 NPTF, MALE
46	3.00	24262	ADAPTER, NIPPLE, HEX 3/8 NPTF, MALE
48	1.00	53386-0808	TEE, BLKHD RUN ORS #8 ORS, BULKHEAD RUN X #8 ORS, MALE
48	1.00	53386-0808	TEE, BLKHD RUN ORS #8 ORS, BULKHEAD RUN X #8 ORS, MALE
49	13.00	18939	TUBE CLAMP 11D CLOSED
51	9.00	948634	PAD, BOLTING 3/8 NC 3/4 OD X 3/4 LG
56	8.00	10011	CAPSCR, HX, 3/8-16NC X 3/4 GR 5
56	5.00	10011	CAPSCR, HX, 3/8-16NC X 3/4 GR 5
56	8.00	10011	CAPSCR, HX, 3/8-16NC X 3/4 GR 5
56	13.00	10011	CAPSCR, HX, 3/8-16NC X 3/4 GR 5
57	13.00	10180	WSHR, LK, HELI, 3/8 X .683 OD
57	15.00	10180	WSHR, LK, HELI, 3/8 X .683 OD
57	10.00	10180	WSHR, LK, HELI, 3/8 X .683 OD
57	8.00	10180	WSHR, LK, HELI, 3/8 X .683 OD
58	5.00	10164	WSHR, FL, 3/8 X 1.000 OD

DR.

ENG. APP.

REL. CK.

91037

90982

E.N. NO.



CAD

AUTO LUBE ASSY.	
ASSY. NO	SHEET. 2 OF 5
A85188A	

THIS DOCUMENT CONTAINS INFORMATION PROPRIETARY TO
 UNIT RIG DIVISION OF TEREX CORPORATION. IT SHALL NOT BE
 REPRODUCED, USED OR DISCLOSED TO ANYONE WITHOUT PRIOR
 WRITTEN PERMISSION OF UNIT RIG.
 © COPYRIGHT DATE

A85188A

AIVERT

ITM	QTY PER ASSY	COMPONENT	DESCRIPTION
58	8.00	10164	WSHR, FL, 3/8 X 1.000 OD
58	13.00	10164	WSHR, FL, 3/8 X 1.000 OD
59	3.00	10017	CAPSCR, HX, 3/8-16NC X 2-1/4 GR 5
59	4.00	10017	CAPSCR, HX, 3/8-16NC X 2-1/4 GR 5
60	4.00	17413	NUT-HEX, FLXLC 3/8-16
60	2.00	17413	NUT-HEX, FLXLC 3/8-16
61	1.00	84315C-097	HOSE ASSY FC310-08 97" LG W/FJ9891 FTGS
62	1.00	84315C-300	HOSE ASSY FC310-08 300" LG W/FJ9891 FTGS
63	1.00	84317C-097	HOSE ASSY FC310-08 97" LG W/FJ9891 & FJ9893 FTGS
67	24.00	23132	CAP COVER
67	14.00	23132	CAP COVER
71	1.00	84315C-096	HOSE ASSY FC310-08 96" LG W/FJ9891 FTGS
72	1.00	84315C-063	HOSE ASSY FC310-08 63" LG W/FJ9891 FTGS
75	1.00	1028467	CONNECTOR
76	1.00	947811	ADAPTER, 90 DEG #16 JIC, MALE X 1 NPTF, MALE
77	1.00	1001156	ADAPTER, 90 DEG #8 JIC, MALE X 3/4 NPTF, MALE
78	1.00	81612C	CLIP-MOUNTING
79	1.00	21772	ADAPTER, BULKHD STR #16 JIC, MALE
80	1.00	1044473	ADAPTER, 45 DEG #8 JIC, MALE X 3/4 NPT, MALE
81	1.00	10547	CPLG, PIPE, 3/4NPT
82	4.00	18900	ADAPTER, 45 DEG #4 JIC, MALE X 1/8 NPTF, MALE
83	1.00	25561	NIPPLE-VALVE
84	1.00	28944	CAP, DUST
85	1.00	69514J	NAMEPLATE (GREASE)
86	2.00	15914	SCR, DR #2 X 3/16 LG
88	4.00	10061	CAPSCR, HX, 3/4-10NC X 1-1/2 GR 5
89	4.00	12185	NUT-HEX, FLXLC 3/4-10
101	8.00	18902	CLAMP-CUSHION 1/2 1/2" ID
101	22.00	18902	CLAMP-CUSHION 1/2 1/2" ID

DR.

ENG. APP.

REL. CK.

37

90982

E.N. NO.



CAD

AUTO LUBE ASSY.

SHEET 3 OF 5

ASSY

NO. A85188A

THIS DOCUMENT CONTAINS INFORMATION PROPRIETARY TO
 UNIT RIG, A DIVISION OF TEREX CORPORATION. IT SHALL NOT BE
 REPRODUCED, USED OR DISCLOSED TO ANYONE WITHOUT PRIOR
 WRITTEN PERMISSION OF UNIT RIG.

A85188A

AVERT

 © COPYRIGHT DATE

ITM	QTY PER ASSY	COMPONENT	DESCRIPTION
102	10.00	17143	CLAMP-CUSHION 1-9/16" ID
103	2.00	21303	ADAPTER, BULKHD STR #4 JIC, MALE
104	1.00	19083	CLAMP-CUSHION 3/4
104	4.00	19083	CLAMP-CUSHION 3/4
104	12.00	19083	CLAMP-CUSHION 3/4
105	40.00	18402	TIE, WRAP 3/16 TO 3-1/2 BUNDLE
107	2.00	17691	HOSE ASSY 211-04 43" LG W/319-04 FTGS
108	2.00	21678	HOSE ASSY 211-04 74" LG W/319-04 FTGS
109	1.00	51793	HOSE ASSY 211-04 150" LG W/319 FITTINGS
110	2.00	29715	HOSE ASSY 211-04 42" LG W/319-04 FTGS
111	2.00	20805	HOSE ASSY 211-04 105" LG W/319-04 FTGS
112	2.00	17709	HOSE ASSY 211-04 112" LG W/319-04 FTGS
113	2.00	24811	HOSE ASSY 211-04 94" LG W/319-04 FTGS
114	2.00	17695	HOSE ASSY 211-04 62" LG W/319-04 FTGS
115	2.00	20481	HOSE ASSY 211-04 84" LG W/319-04 FTGS
116	2.00	17695	HOSE ASSY 211-04 62" LG W/319-04 FTGS
117	2.00	20077	HOSE ASSY 211-04 90" LG W/319 FTGS.
118	1.00	21692	HOSE ASSY 211-04 65" LG W/319-04 FTGS
119	1.00	20643	HOSE ASSY 211-04 52" LG W/319-04 FTGS
120	2.00	25625	HOSE ASSY 211-04 243" LG W/319-04 FTGS
121	1.00	25205	HOSE ASSY 211-04 186" LG W/319-04 FTGS
122	1.00	21134	HOSE ASSY 211-04 55" LG W/319-04 FTGS
123	1.00	29216	HOSE ASSY 211-04 75" LG W/319-04 FTGS
124	1.00	20482	HOSE ASSY 211-04 92" LG W/319 FTGS.
125	2.00	22767	HOSE ASSY 211-04 200" LG W/319 FTGS
126	2.00	1024127	HOSE ASSY 211-04 250 LG W/319 FTGS

DR.

ENG. APP.

REL. CK.

91037

90982

E.N. NO.



AUTO LUBE ASSY.

SHEET 4 OF 5

ASSY

NO. A85188A

THIS DOCUMENT CONTAINS INFORMATION PROPRIETARY TO
 UNIT RIG A DIVISION OF TEREX CORPORATION. IT SHALL NOT BE
 REPRODUCED, USED OR DISCLOSED TO ANYONE WITHOUT PRIOR
 WRITTEN PERMISSION OF UNIT RIG.
 © COPYRIGHT DATE

A85188A

AVCR1

ITM	QTY PER ASSY	COMPONENT	DESCRIPTION
127	1.00	1050618	HOSE ASSY 211-04 236" LG W/319 FTGS
128	1.00	20586	HOSE ASSY 211-04 165" LG W/319-04 FTGS
129	1.00	51604	HOSE ASSY 211-04 109" LG W/ 319-4 FTGS
130	1.00	1024127	HOSE ASSY 211-04 250 LG W/319 FTGS
131	1.00	24837	HOSE ASSY 211-04 182" LG W/319-04 FTGS
132	1.00	84301A-064	HOSE ASSY FC211-04 64" LG W/FJ9891 FTGS
133	2.00	53369-0406	ADAPTER, 90 DEG #4 ORS MALE X 3/8 NPT MALE
135	1.00	21911	HOSE ASSY 211-08 324" LG W/319-08 FTGS
136	1.00	55678	HOSE ASSY 211-16 394" LG W/319 FTGS
137	8.00 *	84211E *	CLAMP-SUPPORT ASSY .75 ID
138	4.00	10330	PLUG-PIPE 1/8NPT
147	24.00	16094	FITTING, GREASE 1/8NPT
149	1.00	52403	PLUG, PIPE, 1/4NPT 3000 PSI FS SQ
151	4.00	56355	CAPSCR, HX, 1/4-20NC X 3-1/2 GR 5
152	1.00	56356	GASKET-GREASE PUMP
160	.00	N85188A	ASSY NOTE: NO DWG, MOUNT REMOTE FILL AT LEFT FRONT CORNER. INCLUDE OVERFLOW LINE.
199	.00	A85188	DWG ONLY, AUTO LUBE

MT4400 W/HYDR. DRIVEN
 LUBE PUMP (ROTARY PUMP).
 REMOTE FILL INSTALLED
 ON LEFT FRONT W/OVERFLOW

DR.

ENG. APP.

REL. CK

37

90982
E.N. NO.

*SEE SERVICE PARTS



AUTO LUBE ASSY.	
ASSY. NO	SHEET 5 OF 5 A85188A

