

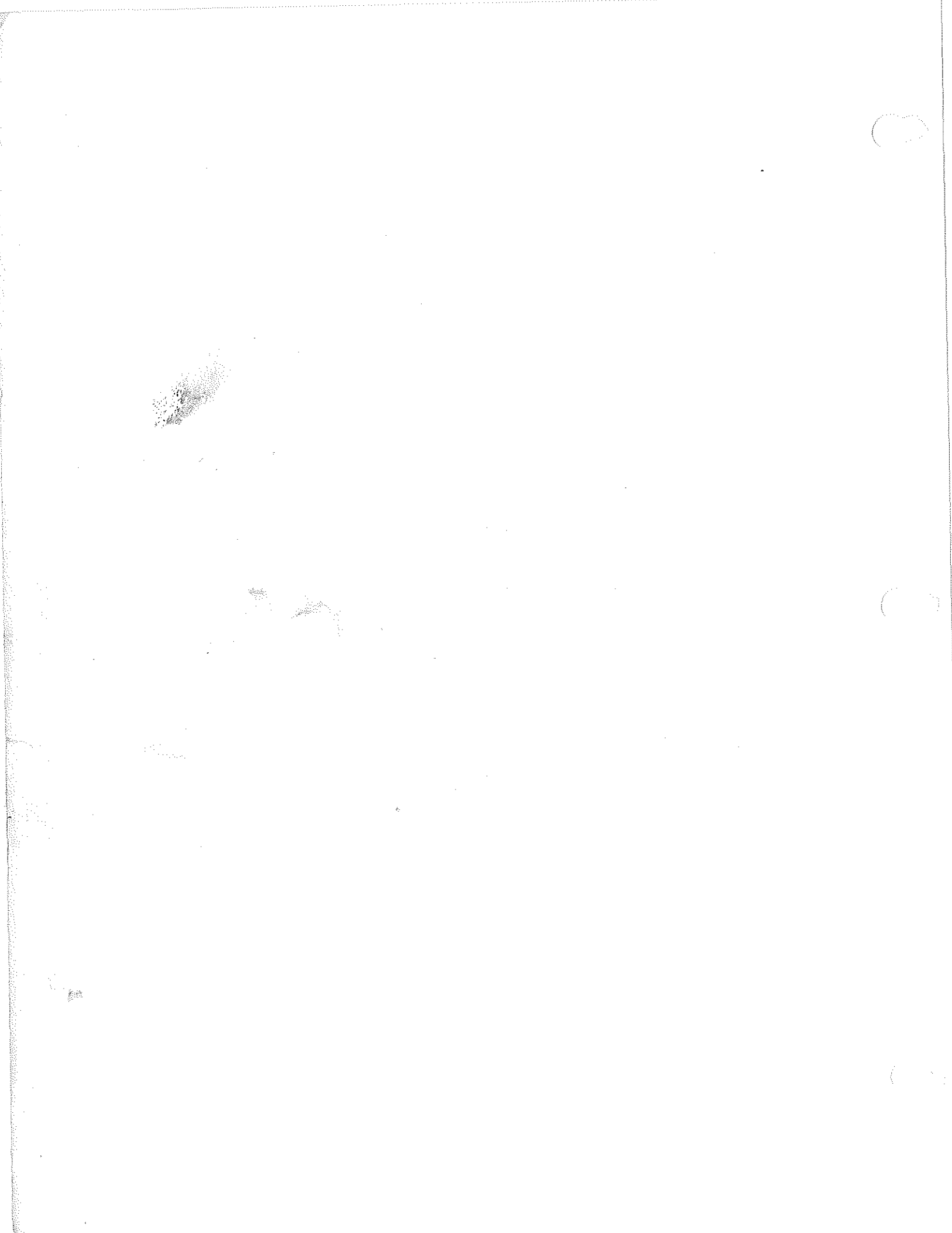
SECTION 8 - BRAKE SYSTEM

DESCRIPTION

Brake Assembly, Front
Brake Assembly, Rear
Front Brake Assembly
Rear Brake Assembly

ASSEMBLY NUMBER

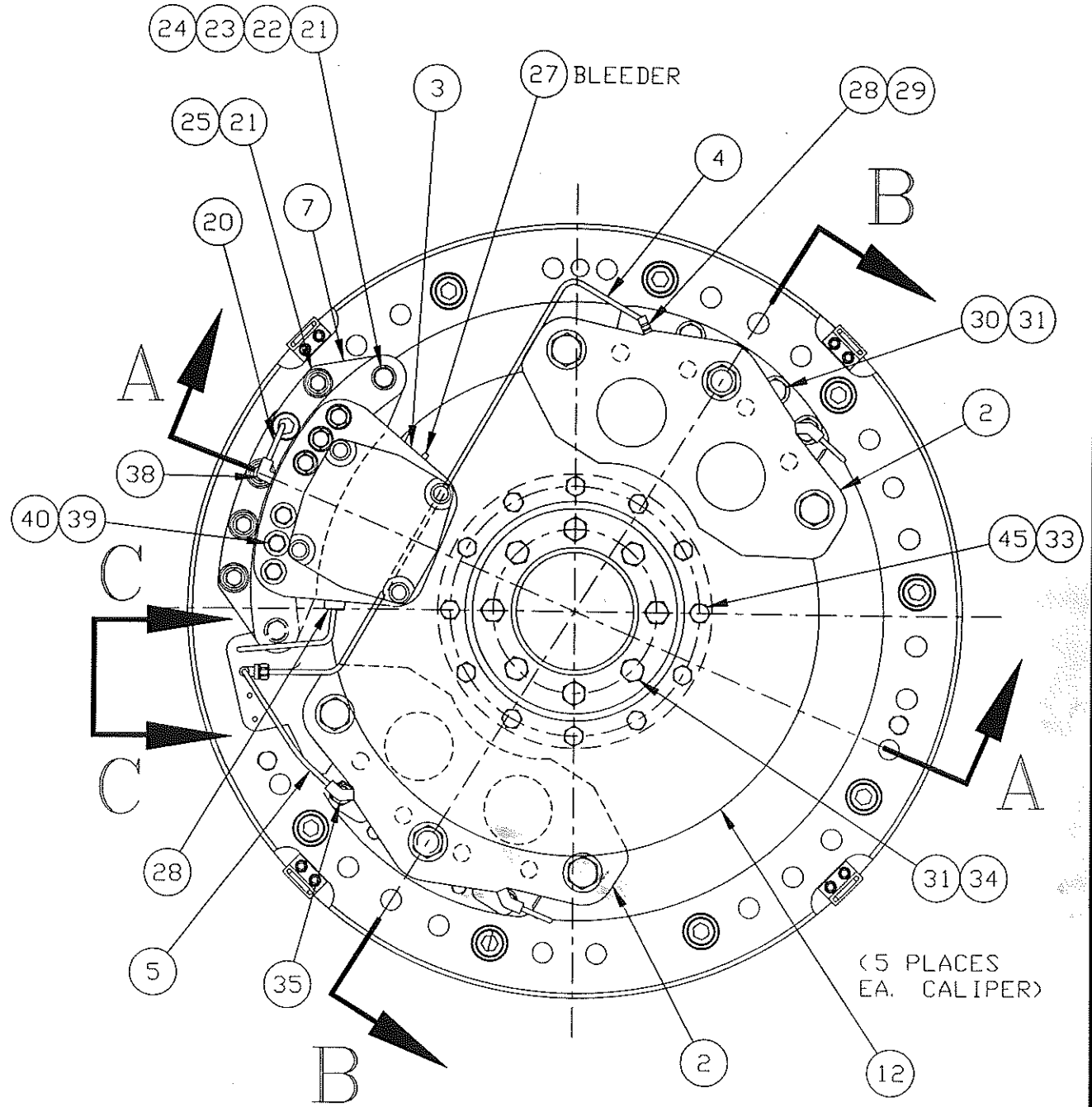
A84196B
A84066B
A84196B
A84066B



A84066

THIS DOCUMENT CONTAINS INFORMATION PROPRIETARY TO
UNIT RIG, A DIVISION OF TEREX CORPORATION. IT SHALL NOT BE
REPRODUCED, USED OR DISCLOSED TO ANYONE WITHOUT PRIOR
WRITTEN PERMISSION OF UNIT RIG.
© COPYRIGHT DATE

DR.
Robinson
ENG. APP.
GREENE
REL. CK.
ELLIS



TORQUE ALL CAPSCREWS PER 02-475 SPEC.



BRAKE ASSEMBLY-REAR	
SHEET 1 OF 4	
A84066	

88156
87883
E.N. NO.

GE 787 & 788 WHEEL
W/CARLISLE BRAKES

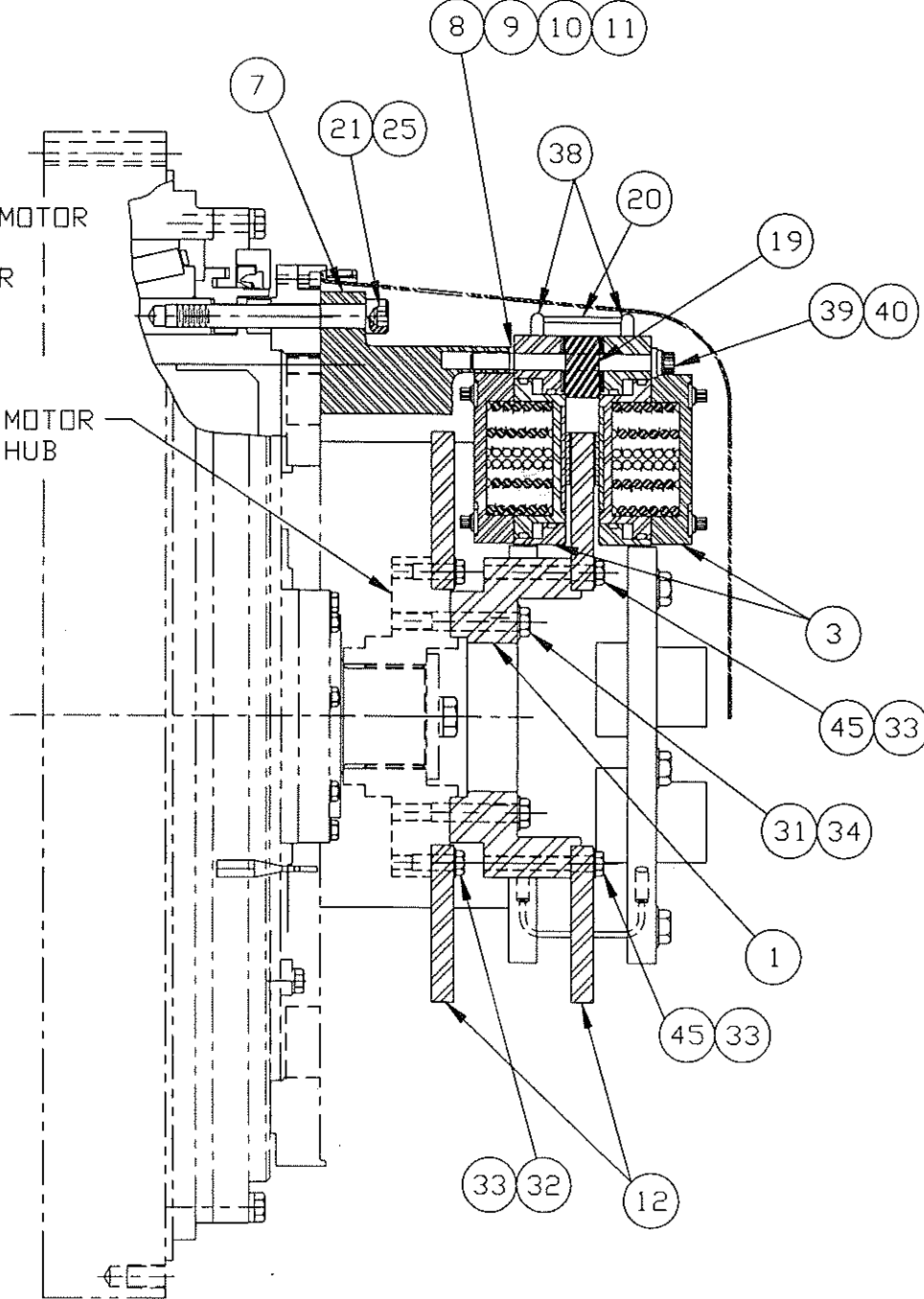
A84066

SHIM AS REQ'D TO
CENTER PARK BRAKE OVER
DISC ±.030 (2 PLCS)

THIS DOCUMENT CONTAINS INFORMATION PROPRIETARY TO
UNIT RIG, A DIVISION OF TEREX CORPORATION. IT SHALL NOT BE
REPRODUCED, USED OR DISCLOSED TO ANYONE WITHOUT PRIOR
WRITTEN PERMISSION OF UNIT RIG.
© COPYRIGHT DATE

WHEEL MOTOR
BRAKE
ADAPTER
(REF)

WHEEL MOTOR
DRIVE HUB
(REF)



SEC A-A

DR.
Robinson
ENG. APP.

REL. CK.

88156

87883
E.N. NO.



BRAKE ASSEMBLY-REAR

SHEET 2 OF 4

A84066

A84066

THIS DOCUMENT CONTAINS INFORMATION PROPRIETARY TO
UNIT RIG, A DIVISION OF TEREX CORPORATION. IT SHALL NOT BE
REPRODUCED, USED OR DISCLOSED TO ANYONE WITHOUT PRIOR
WRITTEN PERMISSION OF UNIT RIG.
© COPYRIGHT DATE

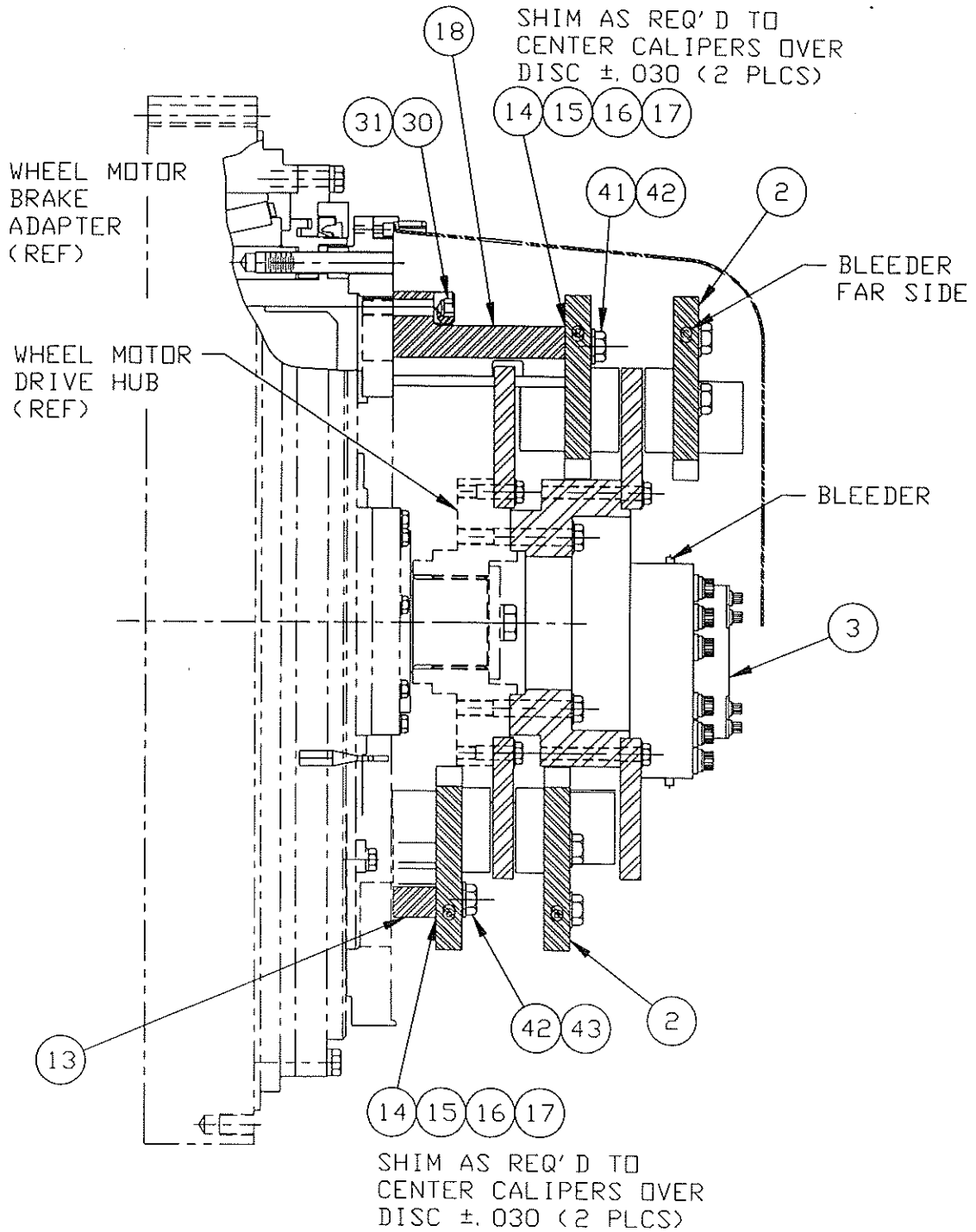
DR.
Robinson
ENG. APP.

REL. CR.

88156

87883

E.N. NO.



BRAKE ASSEMBLY-REAR

SHEET 3 OF 4
A84066

A84066

THIS DOCUMENT CONTAINS INFORMATION PROPRIETARY TO UNIT RIG, A DIVISION OF TEREX CORPORATION. IT SHALL NOT BE REPRODUCED, USED OR DISCLOSED TO ANYONE WITHOUT PRIOR WRITTEN PERMISSION OF UNIT RIG.
© COPYRIGHT DATE

DR
Robinson

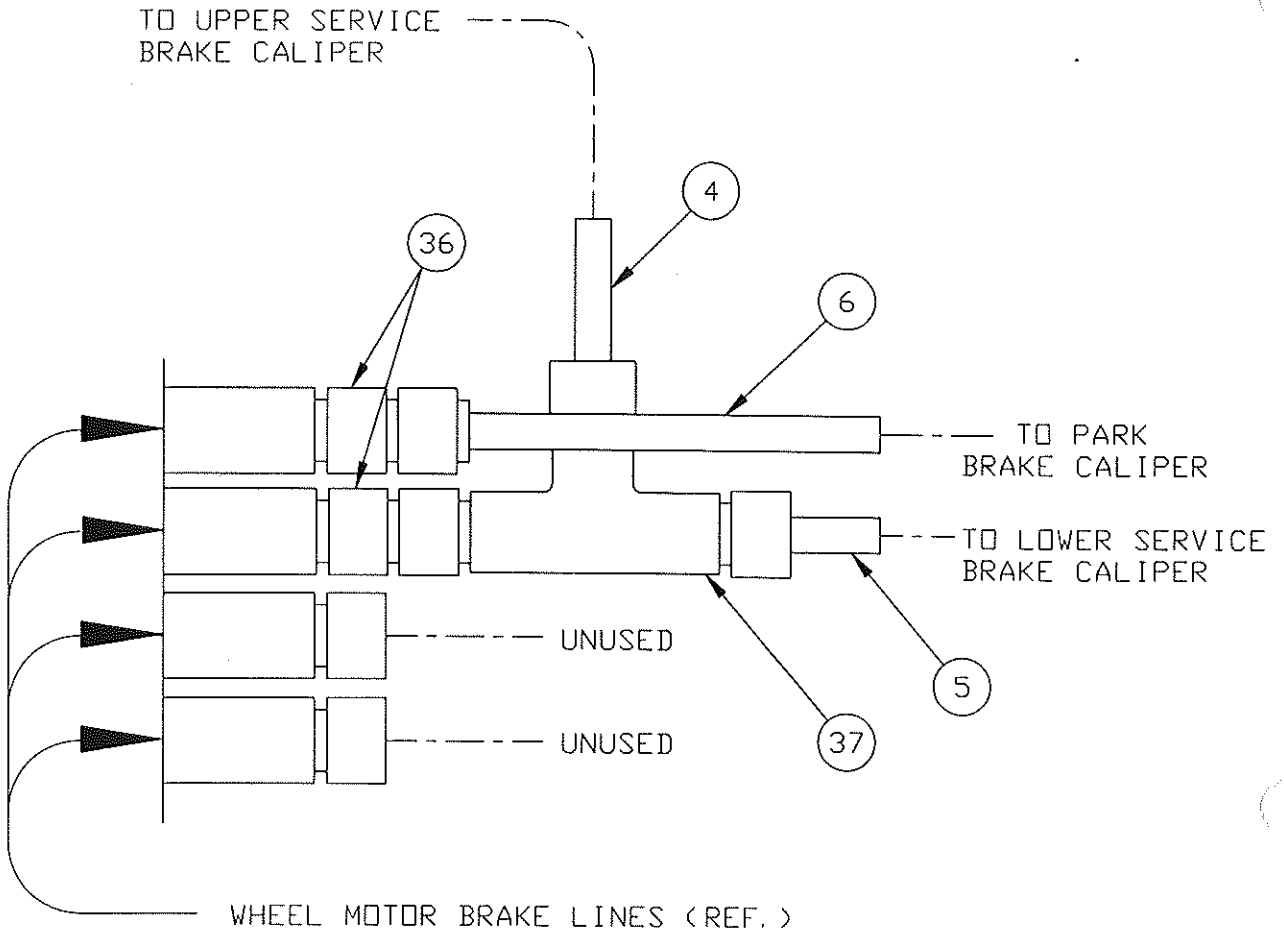
ENG. APP.

REL. CK.

88156

87883

E.N. NO.



VIEW C-C



BRAKE ASSEMBLY-REAR

SHEET 4 OF 4
A84066

A84066B

THIS DOCUMENT CONTAINS INFORMATION PROPRIETARY TO UNIT RIG, A DIVISION OF TEREX CORPORATION. IT SHALL NOT BE REPRODUCED, USED OR DISCLOSED TO ANYONE WITHOUT PRIOR WRITTEN PERMISSION OF UNIT RIG.

1/20/97

© Copyright date

DR. T. DODEN

ENG. APP. *606*

REL. CK. *Ellis*

90041

E.N. NO.

ITM	QTY PER ASSY	COMPONENT	DESCRIPTION
001	1	69209K	SPACER-ADAPTER
S 002	2	55303	CALIPER - REAR BRAKE
S 003	1	53455	BRAKE HEAD ASSY, PARK
004	1	78854H	TUBE ASSEMBLY
005	1	78854E	TUBE ASSY
006	1	78854J	TUBE ASSEMBLY
007	1	83352B	BRACKET, PARK BRAKE
008	1	83353A	SHIM-BRAKE
009	2	83353B	11 GA.SHT.(0.1196) SHIM-BRAKE
010	2	83353C	14 GA.SHT.(0.0747) SHIM-BRAKE
011	2	83353E	20 GA.SHT.(0.0359) SHIM-BRAKE
012	2	51498	28 GA.SHT.(0.0148) DISK BRAKE
013	1	69206A	SPACER BRAKE
014	2	79988A	SHIM-BRAKE
015	2	79988B	11 GA.SHT.(0.1196) SHIM-BRAKE
016	2	79988C	14 GA.SHT.(0.0747) SHIM-BRAKE
017	2	79988E	19 GA.SHT.(0.0418) SHIM-BRAKE
018	1	69208G	31 GA.SHT.(0.0105) SPACER ADAPTER
019	1	79534B	SPACER BRAKE
020	1	79585A	TUBE ASSY
021	10	62770A	WSHR,FL,HARDND,1" X 1.750 OD
022	2	26355	CAPSCR,HX,1-14NF X 5-1/2 GR B
023	2	83368A	SPACER
024	12	79536A	SHIM
025	5	55101	CAPSCR,HXSKT,1-14 UNS X 8-1/2 GR B
026	REF 8	24726	1960 SERIES,BLK OXIDE ADAPTER-BLEEDER 1/8 NPT,MALE X 1/4-28 NF FEMALE BLEEDER
027	REF 5	913151	ADAPTER,STR,SHORT
028	REF 2	911486	4 JIC,MALE X 4 O-RING,MALE
029	REF 1	29849	ADAPTER,90 DEG 4 JIC,MALE X 4 JIC,FEMALE SWIVEL
030	REF 5	25111	CAPSCR,HX,3/4-10NC X 3-1/4 GR B
031	REF 18	65456A	WSHR,FL,HARDND,3/4 X 1.500 OD

*SEE SERVICE PARTS



REAR BRAKE ASSEMBLY

SHEET 1 OF 2

ASSY. NO. A84066B

A84066B

THIS DOCUMENT CONTAINS INFORMATION PROPRIETARY TO UNIT RIG, A DIVISION OF TEREX CORPORATION. IT SHALL NOT BE REPRODUCED, USED OR DISCLOSED TO ANYONE WITHOUT PRIOR WRITTEN PERMISSION OF UNIT RIG.

© Copyright date

ITM	QTY PER ASSY	COMPONENT	DESCRIPTION
032	12	26078	CAPSCR, HX, 5/8-11NC X 2-3/4 GR 8
033	24	901008	WASHER-FLAT
034	8	26109	CAPSCR, HX, 3/4-10NC X 5 GR 8
035	1	23810	ADAPTER, 45 DEG #4 JIC, MALE X #4 O-RING, MALE
036	2	51167	ADAPTER, REDUCER #6 JIC, FEMALE X #4 JIC, MALE
037	1	27806	ADAPTER, TEE #4 JIC, FEM SWVL RUN X #4 JIC, MALE
038	2	21686	ADAPTER, 90 DEG #4 JIC, MALE X #4 O-RING, MALE
039	6	26209	CAPSCR, 12PT, 3/4-10NC X 8 GR 8
040	6	915726	WASHER
041	4	25558	CAPSCR, 12PT, 7/8-9NC X 2 GR 8
042	8	63416A	WSHR, FL, HARDND, 7/8 X 1.625 OD
043	4	25557	CAPSCR, 12PT, 7/8-9NC X 4 GR 8
044	REF 8	900774	BLEEDER
045	12	25113	CAPSCR, HX, 5/8-11NC X 2-1/4 GR 8
099	REF 1	A84066	DWG ONLY, BRAKE ASSY

CARLISLE DUAL DISC
BRAKES FOR 787/788
WHEEL MOTORS.
REVISED PARK BRAKE
MOUNTING.

DR. T. DODEN

ENG. APP.

REL. CK.

90041

E.N. NO.

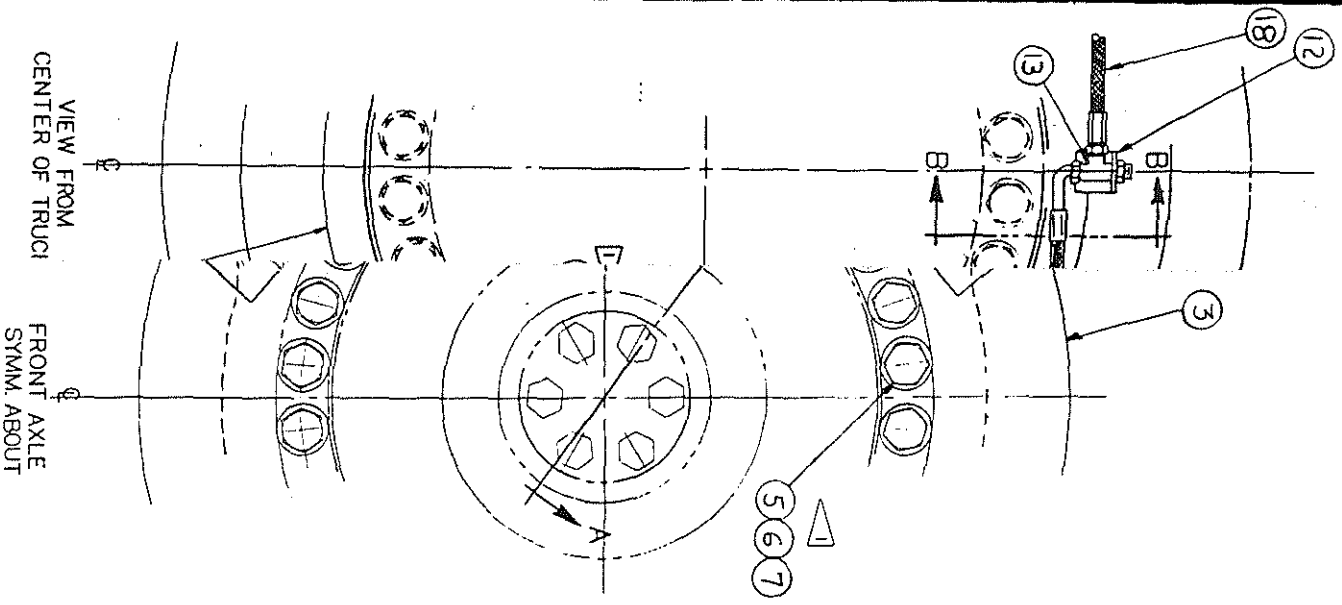


REAR BRAKE ASSEMBLY

SHEET 2 OF 2

ASSY.
NO. A84066B

A84196



THIS DOCUMENT CONTAINS INFORMATION PROPRIETARY TO UNIT RIG & EQUIPMENT CO. IT SHALL NOT BE REPRODUCED, USED, OR DISCLOSED TO ANYONE WITHOUT PRIOR WRITTEN PERMISSION OF UNIT RIG & EQUIPMENT CO. © COPYRIGHT DATE 10-7-94

DR *Dooren*
ENG APP
MASS/SE
RELER
CLIVE

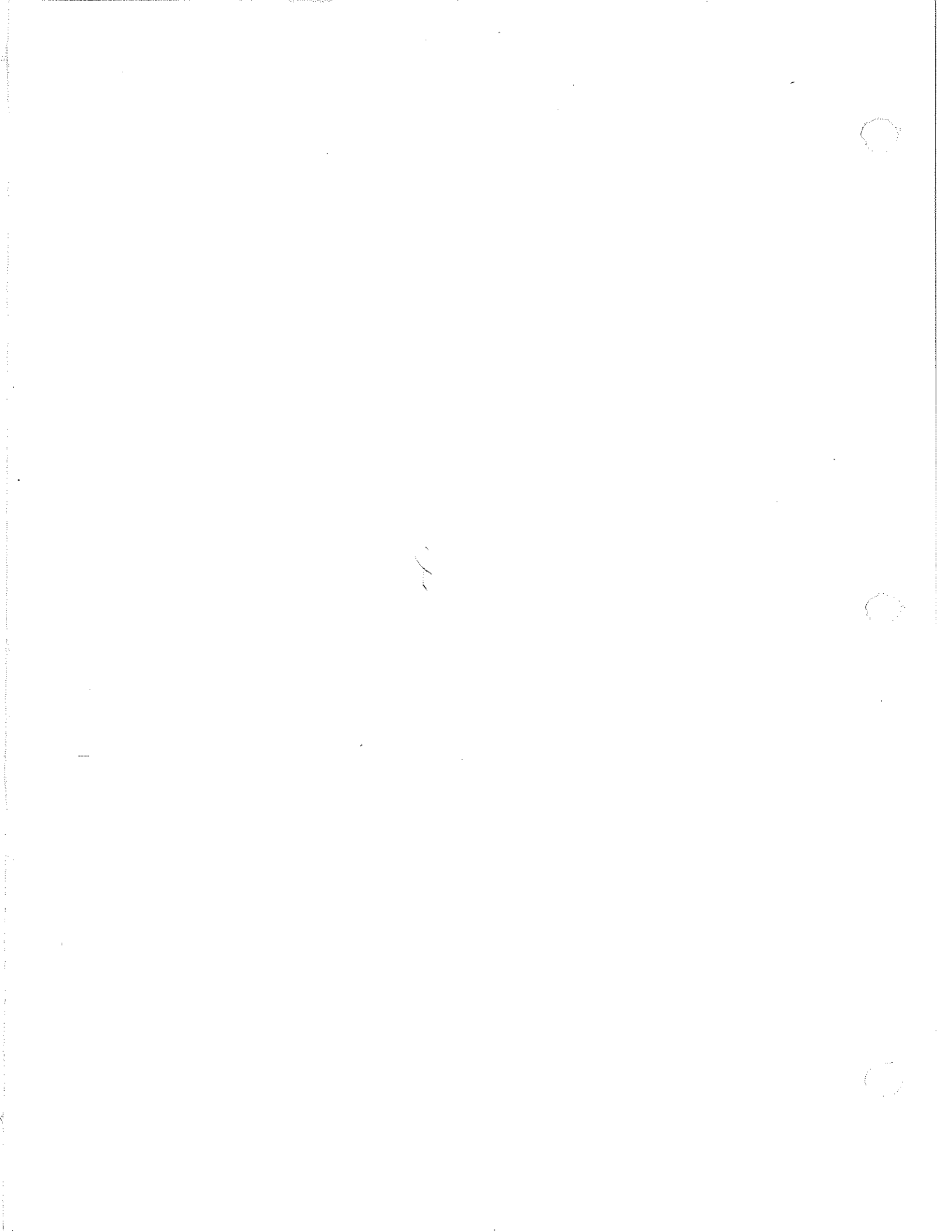
88729
88413
TR NO



FRONT BRAKES - CARLISLE

SHEET 1 OF 1

A84196



A84196B

THIS DOCUMENT CONTAINS INFORMATION PROPRIETARY TO UNIT RIG, A DIVISION OF TEREX CORPORATION. IT SHALL NOT BE REPRODUCED, USED OR DISCLOSED TO ANYONE WITHOUT PRIOR WRITTEN PERMISSION OF UNIT RIG.

Copyright date

DR.	SHAW
ENG. APP.	
REL. CK.	<i>Ellis</i>
E.N. NO.	89969

ITM	QTY PER ASSY	COMPONENT	DESCRIPTION
S 001	4	* 55890 *	CALIPER-FRONT BRAKE SLANT SEALS
002	1	75666K	BRACKET, BRAKE MOUNT
003	1	75662C	DISC, BRAKE (WHL SPEED) 46" OD
004	24	75668C	SHIM-BRAKE
005	30	18641	CAPSCR, HX, 1-1/4-7NC X 4 GR 8
006	30	29980	NUT, HX, 1 1/4-7NC STEEL GR 8
007	90	17026	WSHR, FL, HARDND, 1-1/4 X 2.750 OD
008	30	2405	CAPSCR, HX, 1-1/4-7NC X 3-1/2 GR 8
009	32	29621	CAPSCR, HX, 1-1/4-12NF X 3-1/2 GR 8
010	32	62770B	WSHR, FL, HARDND, 1-1/4 X 2.270 OD
011	REF 8	913151	BLEEDER
012	1	82859B	ANGLE BULKHEAD MNTG
013	1	53386-0606	ADAPTER, BHD RUN TEE #6 ORS, BULKHEAD RUN X #6 ORS, MALE
014	2	53379-0606	ADAPTER, TEE #6 ORS, FEMALE RUN X #6 ORS, MALE
015	4	53360-0604	ADAPTER, STRAIGHT #6 ORS, MALE X #4 O-RING, MALE
016	1	84317B-031	HOSE ASSY FC310-06 31" LG W/FJ9891 & FJ9893 FTGS
017	2	84315B-037	HOSE ASSY FC310-06 37" LG W/FJ9891 FTGS
018	1	84315B-037	HOSE ASSY FC310-06 37" LG W/FJ9891 FTGS
019	4	19083	CLAMP-CUSHION 3/4
020	4	10001	CAPSCR, HX, 1/4-20NC X 3/4 GR 5
021	4	10162	WSHR, FL, 1/4 X 0.625 OD
022	4	10178	WSHR, LK, HELI, 1/4 X .489 OD
023	4	34083	FAD, BOLTING 1/4-20 NC, #7 DRILL
024	REF 1	AB4196	DWG ONLY, FRONT BRAKES

QUAD CARLISLE J-6 CALIPERS W/46" DISC. FOR MT4400; USES ORS HOSES. W/SLANT SEALS

FRONT BRAKE ASSEMBLY
SHEET / OF / ASSY.
NO. AB4196B

*SEE SERVICE PARTS



